

VEQTRON



VEQTRON – GUIDED SURGERY



**4K**

## VEQTRON ICG/NIR Imaging System **4K**

**71-068-05 NIR** 4 CMOS 4K

Camera Control unit only

- Innovative 4 CMOS 4K technology
- Optional: 4K motorized camera head
- Ergonomic and lightweight camera head
- Super high fluorescence sensitivity
- Ultimate colour reproduction which brings true to life colour
- Wide dynamic range enhances the three-dimensionality and depth perception of the picture
- Technology which presents pictures rich in depth, texture and details
- Special technology for colour and detail enhancement
- Standard White Light Mode, Standard Fluorescence Mode, ISO Fluorescence Mode and Multi-Display Mode
- Switch mode by pressing the camera button, which is extremely convenient to use
- Integrated capture module (image and video)
- Applications:
  - Gastrointestinal surgery
  - Gynaecology surgery
  - Hepatobiliary surgery (Liver)
  - Laparoscopy surgery
  - Thoracic surgery
  - Urinary surgery
  - Stomach enterochirurgia

### Technical Data:

|                         |   |
|-------------------------|---|
| Video system:           | Progressive Scan with 50 or 60 Hz                     |
| Image-sensor:           | 4 x CMOS  |
| Pixels:                 | 4K UHD 4096 x 2160 pixels                             |
| Horizontal resolution:  | > 1,600 TV-Lines                                      |
| Aspect ratio:           | 16:9  |
| Video output:           | 1 x DVI<br>1 x HDMI<br>1 x 4x3G-SDI<br>1 x 12G-SDI    |
| Other connections:      | 1 x USB<br>2 x RS232                                  |
| Power supply:           | 110-240 V (150 VA)                                    |
| Dimensions unit:        | 370 x 150 x 403 mm (WxHxD)                            |
| Weight unit:            | 8.9 kg  |
| Dimensions camera head: | 49 x 60 x 134 mm (WxHxD), without cable and objective |
| Weight camera head:     | 600 g (without objective)                             |
| Protection class:       | I (acc. to IEC 60601-1)                               |
| Approval:               | CE  |

### Included in delivery:

- Control unit
- Camera head with 3.0 m cable and zoom objective
- Mains cable
- 2 pcs. Fuse (F3.15 AH 250 V)
- 1 pc. DVI cable
- 1 pc. HDMI cable
- 1 pc. 12G-SDI cable
- 1 pc. 4 x 3G-SDI cable
- 1 pc. Instruction manual



**71-068-10 NIR** 4 CMOS 4K

Camera head with remote control (3 buttons), and cable



**71-088-20 NIR** f = 20 mm

**71-088-23 NIR** f = 23 mm

**71-088-27 NIR** f = 27 mm

Objective



**71-089-30 NIR**

Zoom objective f = 14-28 mm, for Laparoscopy, Urology, Gynaecology and Arthroscopy





## VEQTRON ICG/NIR Twinlight LED-LASER

### 71-182-30 NIR

Light source

- Suitable for 4K Imaging system 71-068-00 NIR
- More light with lower energy consumption
- Colour temperature of approx. 6,200 K corresponds to daylight and guarantees excellent illumination and colour rendering, especially in combination with our 4K VEQTRON ICG/NIR imaging systems
- Light intensity is infinitely variable, guaranteeing a consistently high quality of light
- No downtime and costs due to time-consuming lamp changes
- Adaptive light adjustment (in White Light and NIR Mode) – Light intensity is adjusted automatically to the distance between endoscope and tissue

#### Technical Data:

|                     |                            |
|---------------------|----------------------------|
| Colour temperature: | 6,200 K                    |
| CRI:                | > 85                       |
| Laser:              | Yes                        |
| LED Lifetime:       | > 30,000 hrs               |
| Power supply:       | 110-240 V / 50-60 Hz       |
| Power consumption:  | 200 VA                     |
| Brightness control: | 0-100% stepless adjustable |
| Light exit:         | AMNOTEK                    |
| Input:              | 1 x RS232                  |
| Dimensions:         | 370 x 150 x 403 mm (WxHxD) |
| Weight:             | 11.24 kg                   |

#### Included in delivery:



- Control unit
- Mains cable
- 2 pcs. Fuse (F3.15AH 250V)
- Instruction manual





## VEQTRON ICG/NIR 4K UHD Laparoscope

134° C  
18 min AUTOCLAVE  
273° F

| Length   | Ø       | 0°  | 30°   |
|----------|---------|---|---|
|          |         |  |  |
| 300.0 mm | 5.5 mm  | <b>72-405-00 NIR</b>  | <b>72-405-30 NIR</b>  |
| 330.0 mm | 10.0 mm | <b>72-410-00 NIR</b>  | <b>72-410-30 NIR</b>  |



134° C  
18 min AUTOCLAVE  
273° F

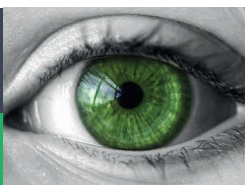
## Cold light cables for VEQTRON ICG/NIR Twinlight LED-LASER

Cable with 2 adapters

| Length   | Ø 4.8 mm                    |
|----------|-----------------------------|
| 300.0 cm | <b>71-146-30 NIR C-US</b> ■ |

## Replacement parts

|           |  |
|-----------|--|
| 71-099-00 | 2.0 m, Power Supply Cord EU                            |
| 71-099-02 | 1.8 m, Power Supply Cord US                            |
| 71-099-10 | Fuse, Amnotec CCU/Light Source (F3,15AH, 250V, 5x20mm) |
| 71-099-20 | 1.5 m, Shielded, DVI Cable                             |
| 71-099-22 | 5.0 m, Shielded, HDMI Cable                            |
| 71-099-24 | 8.0 m, Shielded, 12G-SDI Cable                         |
| 71-099-26 | 5.0 m, Shielded, 4X3G-SDI Cable                        |
| 71-099-30 | DVI-D/HDMI Adapter (Straight)                          |
| 71-099-32 | DVI-D/HDMI Adapter (Right Angle)                       |
| 71-099-40 | Cable, Serial, RS-232, Amnotec                         |
| 72-995-00 | Laparoscope Light Post Wolf Adapter                    |
| 72-995-02 | Laparoscope Light Post Storz Adapter                   |





## VEQTRON ICG/NIR WORKSTATION

### 71-705-52 NIR TT

with transformer

- High torsional stiffness & stability due to the constructive design of the base
- Max. load capacity 80.0 kg
- High-quality, antistatic dual wheels with locking brakes
- Easy and direct manoeuvring of the fully-stocked equipment cart with the help of the handle
- Secure grip of the devices due to the increased circumferential spill edge
- Easy to access and therefore easy to clean
- With isolating transformer

#### Technical Data:

2 x Shelves 42,4 x 43 cm, adjustable, max. load capacity 20.0 kg  
 1 x Drawer  
 1 x TFT-monitor holder up to 14 kg VESA75/100, rotatable and inclinable  
 1 x Isolating transformer with multiple socket, 6 plug-boxes Schuko and power cable L. 5 m

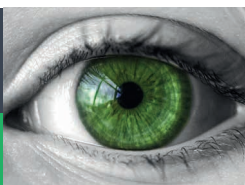
Dimensions: 133 x 61 x 62 cm (HxWxD)  
 Colour surface: RAL 7035 light grey, powder-coated  
 Decor elements: RAL 7035 light grey



## VEQTRON SWIVEL ARM

### 71-705-46

Swivel arm, single single, for second TFT-monitor, max. load: 3-10 kg



# VEQTRON

