

EVERY BREATH MATTERS

PROTECT O.R. STAFF FROM **HARMFUL** SURGICAL SMOKE

Partner with the ***leader in smoke management***
— offering the largest portfolio of surgical smoke
management products on the market.

TABLE OF CONTENTS

WHY CONMED?	04	SURGICAL SMOKE EVACUATORS	07	FILTERS	15
The Dangers of Surgical Smoke	05	PlumeSafe® X5™	08	ViroSafe® Filters	16
Health Impacts	06	VisiClear®	10	Wall and Portable Suction Systems	20
		ViroVac®	13	Competitive Replacement Filters	22
PENCILS AND ADAPTERS	26	LAPAROSCOPIC SOLUTIONS	37	TUBING AND ACCESSORIES	42
PlumePen® Smoke Evacuation Pencils	27	PlumePort® ActiV®	38	Tubing	43
GoldVac® and GoldVac Slim®	30	PlumePort®	39	Automatic Activation Devices	46
SnapEvac™ Smoke Evacuation Adapter	32	PlumePort® SEO	40	Fluid Trap	47
PenAdapt® Smoke Evacuation Adapter	33			Y Adapter	48
ClearVac® Smoke Evacuation Pencils	35			Other Accessories	49

A photograph of three surgeons in an operating room. They are wearing blue scrubs, blue bouffant caps, and white surgical masks. The surgeon in the center is holding a surgical instrument. The background shows medical equipment and a bright surgical light.

WHY CONMED?

A LEGACY OF INNOVATION

THERE ARE DANGERS IN SURGICAL SMOKE PLUME

TOGETHER, WE CAN HELP ELIMINATE THEM.

What is surgical smoke? Surgical smoke is dangerous, vaporized combusted by-product that forms when an energy source is applied to tissues, fluids or blood¹. Research has shown that on average smoke produced daily was equivalent to 27-30 cigarettes².

Additionally, half a million healthcare workers are exposed to surgical smoke every year³. The most obvious population exposed are O.R. staff. O.R. nurses, in particular, report twice the number of respiratory illness compared to the general public⁴.



FEBRUARY 25, 1990

SMOKING BANNED ON U.S. FLIGHTS⁵

Health protections are in place today to protect the public from harmful cigarette smoke — why are we not protecting O.R. staff from surgical smoke?

¹ConMed. (2022). Clear The Air®: The Time is Now. [PowerPoint slides]. URL

²Hill, D.S. et. Al., Surgical Smoke- A health hazard in the operating theatre. A study to quantify exposure and a survey of smoke extractor systems in UK plastic surgery units. Journal of Plastic, Reconstructive, and Aesthetic Surgery 2012.

³Barrett, W., Garber, S. (2004). Surgical Smoke — A Review of the Literature. Business Briefing, Global Surgery

⁴Ball, K., (2010). Compliance With Surgical Smoke Evacuation Guidelines: Implications for Practice. AORN Journal. doi: 10.1016/j.aorn.2010.06.002

⁵American Nonsmokers' Rights Foundation. (2015). Celebrating 25 Years of Smokefree Skies. <https://no-smoke.org/celebrating-25-years-smokefree-skies/>

⁶ConMed. (2022). Clear The Air®: The Time is Now. [PowerPoint slides]. URL

⁷ConMed. (2022). Every Breath Matters. [Video]. URL



ANGELA HOHN

BSN, BS, CNOR, FCN

PERIOPERATIVE NURSE, ATLANTA, GA

In February of 2020, Angela was diagnosed with stage 4 non-small cell lung cancer after 40 years as an O.R. nurse⁶.

// I would wear my mask everyday not to protect myself from smoke per say but to protect the patient...there was nothing protecting me.

150 TOXIC CHEMICALS

ARE FOUND IN SURGICAL SMOKE

Surgical smoke contains over 150 chemicals¹. More than a third are classified as toxic, mutagenic, or carcinogenic². These substances are released when energy breaks down tissue, protein, and fat, producing volatile organic compounds(VOCs) like benzene, formaldehyde, toluene, and ethylbenzene.

According to the U.S. EPA, prolonged exposure to VOCs can cause nausea, dizziness, loss of coordination, and long-term damage to the liver, kidneys, and nervous system³. AORN also warns of potential reproductive risks from occupational exposure⁴.

HEALTH IMPACT KEY



Brain
Damage



May Cause
Cancer



Flamable



Heart
Damage



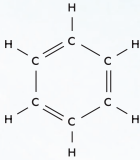
Kidney
Damage



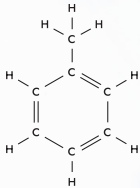
Lung
Damage



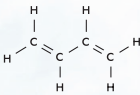
Reproductive
Complications



BENZENE



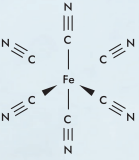
TOLUENE



1,3-BUTADIENE



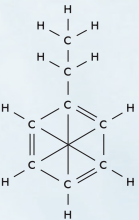
**CARBON
MONOXIDE**



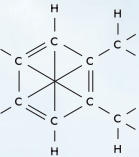
**HYDROGEN
CYANIDE**



FORMALDEHYDE



ETHYLBENZENE



XYLENE



¹Pierce JS, Lacey SE, Lippert JF, Lopez R, Franke JE. Laser-generated air contaminants from medical laser applications: a state-of-the-science review of exposure characterization, health effects, and control. J Occup Environ Hyg. 2011;8(7):447-466

²Ulmer BC. The hazards of surgical smoke. AORN J. 2008 Apr;87(4):721-34; quiz 735-8. doi: 10.1016/j.aorn.2007.10.012. PMID: 18461735

³U.S. Environmental Protection Agency. Volatile Organic Compounds' Impact on Indoor Air Quality. www.epa.gov/indoor-air-quality-iaq/volatile-organic-compounds-impact-indoor-air-quality

⁴AORN. Your Practice: 3 Medication Safety Risks in Periop Settings. www.aorn.org/article/your-practice-3-medication-safety-risks

A woman in blue scrubs and a surgical cap is shown in an operating room. In the background, there is a large surgical light and medical equipment. The image has a blue tint.

SURGICAL SMOKE EVACUATORS

**PULL THE
PLUME FROM
THE ROOM**

PLUMESAFE® X5™

With over 30 years of expertise in smoke evacuation, the PlumeSafe® X5™ Smoke Management System represents the next evolution in surgical smoke removal and filtration. Designed with direct input from nurses and surgeons, the PX5 combines proven performance with advanced filtration technology to deliver a powerful, user-friendly solution. It effectively captures harmful volatile organic compounds (VOCs)¹ commonly present in surgical smoke, enhancing safety for both operating room staff and patients.

The PX5's exceptional performance reinforces CONMED's leadership in the smoke evacuation field and underscores its commitment to partnering with healthcare facilities that prioritize the health and safety of their teams and patients.



+ Advanced Filtration

A first-of-its-kind 5-stage filtration system captures a broader range of surgical smoke contaminants, including volatile organic compounds.¹ The high-performance ULPA filter removes particles as small as 0.01 microns with an average efficiency of 99.9997%,¹ offering protection well beyond standard systems. With an extended filter life of up to 35 hours¹, it delivers consistent, long-lasting performance for a wide range of procedures.

+ Safety-Driven Design

Engineered with safety in mind, the system delivers a maximum airflow of 33 CFM, exceeding AORN Surgical Smoke Guidelines¹. To ensure maximum smoke capture, the system was engineered with increased motor ramp up speed, reaching 90% effective evacuation in less than 1.6 seconds.¹ An integrated occlusion warning adds another layer of protection, ensuring continuous and effective smoke evacuation throughout the procedure.

+ Streamlined User Experience

Designed for efficiency, the system features dual 7/8" ports that allow two smoke pencils to be connected simultaneously without additional accessories. A responsive, touch-sensitive display enables quick, intuitive adjustments, while three operating modes help maximize filter life based on the specific surgical application¹.

¹ Data on file



ORDERING INFORMATION

Description	Qty/Case	Catalog Number
PLUMESAFE® X5™		
Smoke Management System, 120V	1	PX5-120
Smoke Management System, 120V, No Filter	1	PX5-120NF
Smoke Management System, 220V	1	PX5-220
Smoke Management System, 220V, No Filter	1	PX5-220NF
Filter, 1/4", 7/8"	1	PX5-135-22
Filter, 1/4", 7/8"	4	PX5-1354-22

VISICLEAR®

Combining variable filter life (up to 35 hours depending on procedure*), automatic filter life tracking, an occlusion alarm and one touch programmable procedure modes. VisiClear® effectively filters surgical smoke, particulates and other potentially hazardous

by-products providing a healthier environment for O.R. Staff. Designed with Whisper Technology™** to ensure ultra-quiet operation that exceeds AORN Guidelines.**

* Data on file.

** AORN Guidelines: AORN. 2021. Guidelines for Perioperative Practice: Surgical Smoke Safety.





DID YOU KNOW?

Smoke evacuators have shown to **decrease** exposure of particles by

88%¹⁰

VISICLEAR®
SURGICAL SMOKE EVACUATOR



+ Procedure Operating Modes

One of three operating modes (Laparoscopic, Open Tubing, and Electrosurgical Pencil Mode) can easily be selected, automatically customizing filter life based on surgical procedure.

+ Advanced Sound Control Design

Whisper Technology™ ensures ultra-quiet operation well below AORN maximum noise level guideline.*

+ Occlusion Warning

Safety feature that alerts medical personnel when an occlusion has occurred.

+ Intuitive Color Touch Screen

Can be operated with ease even with a gloved hand, and requires minimal training to operate.

+ Unique Sliding Port Closure

SafePort™ Technology ensures reduced risk of staff coming in contact with a contaminated port.

* AORN Guidelines: AORN. 2021. Guidelines for Perioperative Practice: Surgical Smoke Safety.

¹⁰Karjalainen M, Kontunen A, Saari S, Rönkkö T, Lekkala J, Roine A, Oksala N. The characterization of surgical smoke from various tissues and its implications for occupational safety. PLoS One. 2018 Apr 12;13(4):e0195274. doi: 10.1371/journal.pone.0195274. PMID: 29649244; PMCID: PMC5896939



ORDERING INFORMATION

Description	Qty/Case	Catalog Number
VISICLEAR®		
100/120 Volt System	1	VC120
200/240 Volt System	1	VC220
100/120 Volt System without a filter	1	VC120NF

VIROVAC®

ViroVac® Surgical Smoke Evacuator is compact, but no less capable, to meet all your physician office and outpatient center needs.

The versatile, patented 3-Port filter design features covered, hidden male ports and accommodates a variety of tubing sizes. Variable filter life (up to 35 hours*) delivers value and reduces costs per

procedure. Filter tracking technology automatically tracks and records filter life. EZLink®, an automatic activation device, can be used to remotely turn the evacuator on and off, saving filter life. ViroSafe® Fluid Trap is designed to capture fluids to help maintain the integrity of the filtration system and assist with maintaining filter life.

* Data on file.



- + Compact Design**

Allows for easy placement on shelf or counter.
- + Filter Tracking Technology**

Automatically tracks and records filter life through a patented technology.
- + Patented 3-Port Filter Design**

Versatile 3-port filter design features covered, hidden male ports and accommodates a variety of tubing sizes providing versatility in procedure and accessory setup.
- + Variable Filter Life (up to 35 hours)***

Delivers value by maximizing filter life, reducing per procedure costs.

ORDERING INFORMATION

Description	Qty/Case	Catalog Number
VIROVAC®		
100/120 Volt Systems	1	VV120
200/240 Volt Systems	1	VV220
200/240 Volt Systems, without a filter	1	VV220NF





FILTERS

FILTER OUT THE SMOKE

VIROSAFE® FILTERS

ViroSafe® filters have four stage filtration, enabling you to breathe cleaner air in your O.R. ULPA filtration is designed to remove 99.999% of the 0.1 – 0.2 µm* particulate in surgical smoke and the activated carbon is designed to adsorb hazardous gases. Filter Tracking Technology automatically tracks and records filter life through a patented technology.

VISICLEAR® FILTER

Designed to fit VisiClear® smoke evacuator, SafePort™ Technology prevents the clinician from accidentally touching an exposed port when not in use. Customized filter life for acute care applications.



+ 4 Stage Filter

Gross particulate, ULPA media, activated carbon, and post filter designed to capture 0.1-0.2 micron particles at 99.999%*

+ Up to 35 Hours of Smoke Evacuation Time*

+ 3-Port Filter

7/8" (22 mm), 3/8" (9.5 mm) and 1/4" (6.4 mm).

* Data on file.



ORDERING INFORMATION

Description	Qty/Case	Catalog Number
VIROSAFE® VISICLEAR® FILTERS		
3-port filter — 7/8 in (22 mm), 3/8 in (9.5 mm) and 1/4 in (6.4 mm)	1	VS135
3-port filter — 7/8 in (22 mm), 3/8 in (9.5 mm) and 1/4 in (6.4 mm)	2	VS1352
3-port filter — 7/8 in (22 mm), 3/8 in (9.5 mm) and 1/4 in (6.4 mm)	4	VS1354



CASE STUDY

62-year-old gynecologist consulted otolaryngologist for a foreign body sensation in his throat for many weeks. Biopsy of the base of tongue revealed squamous cell carcinoma; positive for HPV 16¹¹

¹¹Rioux et.al. HPV positive tonsillar cancer in two laser surgeons: case reports Journal of Otolaryngology - Head and Neck Surgery 2013, 42:54
<http://www.journalotohns.com/content/42/1/54>

VIROVAC® FILTER

Designed to fit ViroVac® smoke evacuator.



+ 4 Stage Filter

Gross particulate, ULPA media, activated carbon, and post filter designed to capture 0.1-0.2 micron particles at 99.999%.*

+ Up to 35 Hours of Smoke Evacuation Time*

+ 3-Port Filter

7/8" (22 mm), 3/8" (9.5 mm) and 1/4" (6.4 mm).

+ Hidden Ports

Reduce the risk of cross contamination to caregivers.

* Data on file.

ORDERING INFORMATION

Description	Qty/Case	Catalog Number
VIROSAFE® VIROVAC® FILTERS		
3-port filter — 7/8 in (22 mm), 3/8 in (9.5 mm) and 1/4 in (6.4 mm)	1	VS353
3-port filter — 7/8 in (22 mm), 3/8 in (9.5 mm) and 1/4 in (6.4 mm)	2	VS35302
3-port filter — 7/8 in (22 mm), 3/8 in (9.5 mm) and 1/4 in (6.4 mm)	4	VS35304



WALL AND PORTABLE SUCTION SYSTEMS

73% OF O.R. NURSES REPORT SYMPTOMS FROM SURGICAL SMOKE EXPOSURE:¹³

<i>Shortness of Breath (SOB)</i>	<i>Nasal or Vocal Cord Polyp(s)</i>
<i>Increased Coughing</i>	<i>Bronchitis</i>
<i>Nose Bleeds, Nasal Congestion</i>	<i>Leukemia</i>

¹³Association of Occupational Exposure to Inhaled Agents in Operating Rooms With Incidence of Chronic Obstructive Pulmonary Disease Among US Female Nurses Wubin Xie, DrPH; Orienne Dumas, PhD; Raphaëlle Varraso, PhD; Krislyn M. Boggs, MPH; Carlos A. Camargo Jr, MD, DrPH; Andrew C. Stokes, PhD

IN-LINE FILTERS

Designed to capture particulate before it enters wall suction systems.



+ ULPA-Rated Media

Designed to filter 0.1-0.2 micron particles at 99.999% efficiency.*

+ Clear Housing Allows for Visualization of Filter Life

+ Economical

+ Designed for Ease of Use

* Data on file.



ORDERING INFORMATION

Description	Qty/Case	Catalog Number
MULTI-USE IN-LINE FILTER Ideal for connection to wall suction port	10	BILF150
MULTI-USE IN-LINE FILTER Ideal for connection to wall canister tree 3/8" (9.5 mm) detached tube to single 1/4" (6.4 mm)	10	BILF200

COMPETITIVE REPLACEMENT FILTERS

We offer a variety of filters for non-CONMED surgical smoke evacuators.



SMOKE MOVES FAST

40mph is the rate of speed that smoke particles can travel and be evenly distributed throughout the O.R.¹⁴

¹⁴Nicola JH, Nicola EM, Vieira R, Braile DM, Tanabe MM, Baldin DH. Speed of particles ejected from animal skin by CO2 laser pulses, measured by laser Doppler velocimetry. Phys Med Biol. 2002;47(5):847-856

SMOKE EVACUATOR FILTER FOR STRYKER® NEPTUNE 2 AND NEPTUNE 3

Designed to fit Stryker® Neptune 2
and Stryker® Neptune 3.



+ 3-Port Filter

7/8" (22 mm), 3/8" (9.5 mm)
and 1/4" (6.4 mm)

**STRYKEVAC 1 & 2 VIROSAFE®
FILTER**

Designed to fit Integrated StrykeVac Smoke
Evacuation System.



+ 4-Port Filter

1-1/4" (32 mm), 7/8" (22 mm),
3/8" (9.5 mm) and 1/4" (6.4 mm)

STRYKEVAC 3 VIROSAFE® FILTER

Designed to fit StrykeVac 3 Smoke Evacuation System
Lasts up to 24 hours of smoke evacuation time.*



+ 3-Port Filter

7/8" (22 mm), 3/8" (9.5 mm)
and 1/4" (6.4 mm)

* Data on file.



BERCHTOLD® TELEVAC & TELEVAC LT

Replaces Berchtold® TELEVAC LT and Surgimedics.

+ 7/8" (22 mm) Port



BERCHTOLD® PHOENIX XS OR X3 FILTER

Replaces Berchtold® TELEVAC XS/X3.

+ 7/8" (22 mm) Port



TRUMPF® VIROSAFE® FILTER (EASYVAC FILTER FOR TRUMPF® EASYVAC)

Designed to fit TRUMPF® EasyVac.

+ 3-Port Filter

7/8" (22 mm), 3/8" (9.5 mm)
and 1/4" (6.4 mm)

ORDERING INFORMATION

Description	Qty/Case	Catalog Number
STRYKER®		
Neptune 2 and Neptune 3, 3-port filter – 3/8" (9.5 mm), 1/4" (6.4 mm)	1	VSNEP01
Neptune 2 and Neptune 3, 3-port filter – 3/8" (9.5 mm), 1/4" (6.4 mm)	2	VSNEP04
StrykeVac 1 & 2, 4-port filter – 1-1/4" (32 mm), 7/8" (22 mm), 3/8" (9.5 mm) and 1/4" (6.4 mm)	20	VSSV505
StrykeVac 1 & 2, 4-port filter – 1/4" (6.4 mm), 3/8" (9.5 mm), 7/8" (22 mm) and 1-1/4" (32 mm)	20	VSSV50502
StrykeVac 3, 3-port filter – 7/8" (22 mm), 3/8" (9.5 mm) and 1/4" (6.4 mm)	1	VSSV301
StrykeVac 3, 3-port filter – 7/8" (22 mm), 3/8" (9.5 mm) and 1/4" (6.4 mm)	2	VSSV302
StrykeVac 3, 3-port filter – 7/8" (22 mm), 3/8" (9.5 mm) and 1/4" (6.4 mm)	4	VSSV304

Description	Qty/Case	Catalog Number
BERCHTOLD®		
TeleVac & TeleVac LT, 7/8" (22 mm) port	4	BTLD004
Phoenix XS or X3, 7/8" (22 mm) port	4	BTLDXS04
TRUMPF®		
EasyVac, 3-port filter – 7/8" (22 mm), 3/8" (9.5 mm) and 1/4" (6.4 mm)	1	VSTR08
EasyVac, 3-port filter – 7/8" (22 mm), 3/8" (9.5 mm) and 1/4" (6.4 mm)	4	VSTR0804

A full-page background image of a surgeon in a blue scrubs and mask, holding a syringe, in an operating room. The surgeon is looking up and to the right. The background is slightly blurred, showing the operating room environment.

PENCILS AND ADAPTERS

OPTIONS FOR EVERY SURGEON

PLUMEPEN®

CONMED offers the most extensive portfolio of smoke evacuation pencils, with our PlumePen® line being the most clinically diverse offering on the market.



DR. MARK MOFID MD
PLASTIC SURGEON, SAN DIEGO, CA



I went from being someone who basically coughed all day and night to a **95% improvement** of my symptoms when I started using smoke evacuation.¹⁵

¹⁵CONMED. (2022). Dr. Mofid Interview. [Video]. URL

PLUMEPEN® ELITE SMOKE EVACUATION PENCIL

An ultra-slim, ergonomic design that offers the comfort and advanced features surgeons demand.



+ Powerfully Compact and Ultra Slim

Significantly smaller (up to 46%*) than other electrosurgical smoke pencils and similar in size to standard electrosurgical pencils.

+ Full Blade Reveal

Offers exceptional visibility at the surgical site.

+ Adjustable Capture Port

Offers customized placement for effective smoke plume capture regardless of blade length.

+ Over-molded Cradle Design

Designed for improved grip and comfort.

+ Up to 25% More Flow*

Provides more flow than competitive electrosurgical smoke pencils.

+ Over-molded Button Design

One piece over-molded button designed to limit fluid ingress aiding in the prevention of sticking buttons.

+ Light, Flexible Tubing

Designed to support hand movement and ergonomic comfort.

+ 360 Degree Swivel

Allows for fluid hand movement and free range of motion.

* Data on file.

**PLUMEPEN® ULTRA
SMOKE EVACUATION PENCIL**

Featuring a telescopic capture port and advanced swivel design for unrestricted hand movement.



+ Telescopic Capture Port with Enclosed Blade

Blade moves in unison with capture port affording versatility in any surgical situation. Integrated design eliminates need for blade replacement saving time and money.

+ Multi-Directional Swivel

Unique, responsive, floating ball design supports natural hand movement and positioning during procedures.

+ Cam Lock System

Have confidence in your blade staying in place with our advanced Cam Locking System, out to 6 inches.

+ Integrated Wire/Tubing Management

Ultra-light, flexible tubing designed for ergonomic comfort.

**PLUMEPEN® PRO
SMOKE EVACUATION PENCIL**

A cost-effective, quality solution combining surgical smoke management with electrosurgery.



+ Sleek, Slim Profile

Smaller than most competitive surgical smoke evacuation pencils; similar in size to standard ESU pencils.*

+ 360 Degree Swivel

Allows for fluid hand movement.

+ Compatible with Standard Electrodes

Designed for surgeries where longer electrodes are desired.

+ Removable Smoke Capture Port

Allows for easy electrode and capture port replacement.

+ Textured Profile


Designed for improved surgeon's grip.

* Data on file.

ORDERING INFORMATION

Description	Qty/Case	Catalog Number
PLUMEPEN® ELITE		
10 ft (3 m) tubing, Stainless Steel ESU Blade	20	PLP1020
10 ft (3 m) tubing, Non-Stick ESU Blade	20	PLP2020
15 ft (4.6 m) tubing, Non-Stick ESU Blade	20	PLP2520
PLUMEPEN® ULTRA		
10 ft (3 m) tubing, Non-Stick ESU Blade	20	PLPUL2020
15 ft (4.6 m) tubing, Non-Stick ESU Blade	20	PLPUL2520
PLUMEPEN® PRO		
10 ft (3 m) tubing, Non-Stick ESU Blade	20	PLPRO4020
15 ft (4.6 m) tubing, Non-Stick ESU Blade	20	PLPRO4520

Description	Qty/Case	Catalog Number
PLUMEPEN® PRO CAPTURE PORTS (X-RAY DETECTABLE)		
Accommodates 4" (102 mm) electrodes	20	PROTIP420
Accommodates 6" (152 mm) electrodes	20	PROTIP620



CASE STUDY

53-year-old gynecologist with human papillomavirus (HPV) 16 positive tonsillar squamous cell carcinoma. Only risk factor was occupational exposure to surgical plume from more than 3,000 cases.¹⁶

¹⁶Rioux et.Al. HPV positive tonsillar cancer in two laser surgeons: case reports Journal of Otolaryngology - Head and Neck Surgery 2013, 42:54 <http://www.journalotohns.com/content/42/1/54>

GOLDVAC® SMOKE EVACUATION PENCIL

Designed to capture smoke at the surgical site, where accessibility and visibility are essential.



+ Extendable Capture Port

Position the 6 in extendable capture port anywhere along the active electrode for effective smoke capture.

+ 360° Range of Motion

GoldVac® smoke evacuation tubing swivels 360° to eliminate wrist drag, and enable maximum maneuverability.

+ Extended Electrodes

Extended and insulated UltraClean® silicone coated electrodes available.

+ Multiple Button Configurations

Available in Push Button, Rocker Switch, and Foot Control configurations.

GOLDVAC® SLIM SMOKE EVACUATION PENCIL

Help keep the O.R. safe from the hazards of surgical smoke with pencils designed for surgeons with smoke evacuation capabilities.



+ Slim, Low Profile

GoldVac® Slim pencils offer an ergonomic design — allowing for a surgical experience and technique that’s similar to that of a standard pencil.

+ Enhanced Visibility

Tapered lumen allows for unobstructed visualization of the target tissue.

+ 360° Range of Motion

GoldVac® Slim smoke evacuation tubing swivels 360° to eliminate wrist drag, and enable maximum maneuverability.

ORDERING INFORMATION

Description	Qty/Case	Catalog Number
GOLDVAC®		
Push Button, 1" UltraClean® Blade Electrode, 10 ft Tubing, Disposable	10	60-7510-005
Rocker Switch, 1" UltraClean® Blade Electrode, 10 ft Tubing, Disposable	10	60-7520-005
Foot Control, 1" UltraClean® Blade Electrode, 10 ft Tubing, Disposable	10	60-7530-005
Push Button, 1" UltraClean® Blade Electrode, 15 ft Tubing, Disposable	10	60-7570-005
Rocker Switch, 1" UltraClean® Blade Electrode, 15 ft Tubing, Disposable	10	60-7580-005
GOLDVAC® SLIM PENCIL		
Push Button, 1" UltraClean® Blade Electrode, 10 ft of 9.5 mm tubing, Disposable	20	60-7610-001
Push Button, 1" UltraClean® Blade Electrode, 15 ft of 9.5 mm tubing, Disposable	20	60-7670-001

Description	Qty/Case	Catalog Number
GOLDVAC® ULTRACLEAN® ELECTRODES		
4" GoldVac® UltraClean® Blade	25	60-7524-001
6" GoldVac® UltraClean® Blade	25	60-7526-001
1" GoldVac® UltraClean® Blade w/ Extended Insulation	25	60-7521-001
4" GoldVac® UltraClean® Blade w/ Extended Insulation	25	60-7522-001
6" GoldVac® UltraClean® Blade w/ Extended Insulation	25	60-7523-001

SNAPEVAC™

SnapEvac™ is an ergonomically designed smoke evacuation electro-surgical pencil adapter that transforms most electro-surgical pencils into surgical smoke evacuation device that captures smoke plume at the point of creation. Just snap in the handpiece of your choice! A transparent capture port improves visibility of the surgical site. It eliminates the need for O.R. personnel to hold tubing, and is a cost-effective option for surgical smoke evacuation.

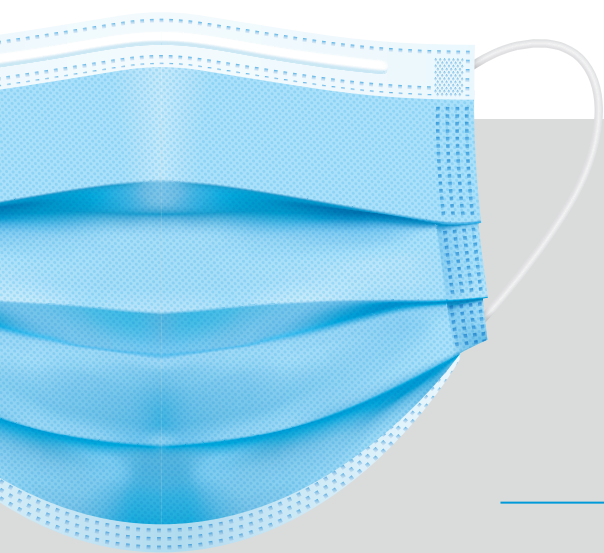
SNAPEVAC™ SURGICAL SMOKE EVACUATION ADAPTER



- + **Efficient Workflow**
Eliminates need for O.R. personnel to hold tubing.
- + **Transparent Capture Port**
Improves visibility of the surgical site.
- + **Cost-Effective**
Economical option for surgical smoke evacuation.
- + **Lightweight Tubing**

PENADAPT®

PenAdapt® is an ergonomically designed smoke evacuation adapter for most electrosurgical pencils that captures surgical smoke at the point of creation.



MASKS DON'T WORK

Surgical masks, even if correctly fitted and frequently changed, can effectively filter only particles larger than **5 microns in size**¹⁷

¹⁷Mowbray N, Ansell J, Warren N, Wall P, Torkington J. Is surgical smoke harmful to theater staff? a systematic review. Surg Endosc. 2013 Sep;27(9):3100-7. doi: 10.1007/s00464-013-2940-5. Epub 2013 Apr 19. PMID: 23605191.

PENADAPT® SURGICAL SMOKE EVACUATION ADAPTER



+ Universal Design

Pliable silicone material allows for proper fit with most electrosurgical pencil brands.

+ Angled Back End Clasp

Designed to reduce tension placed on surgeon's wrist providing comfort.

+ Low Profile Front Nozzle

Improves visibility of the surgical site.

+ Efficient Workflow

Eliminates need for O.R. personnel to hold tubing.

ORDERING INFORMATION

Description	Qty/Case	Catalog Number
SNAPEVAC™ Designed using ABS plastic and polcarbonate capture port with 10 ft (3 m) tubing; 7/8" (22 mm) cuff	20	SNAPEVAC20
PENADAPT® Ideal for surgical smoke evacuator applications. Includes 3/8" (9.5 mm) x 4 ft (1.22 m) tubing with an adapter to 7/8" (22 mm) x 6 ft (1.8 m) tubing	10	PA2010

CLEARVAC®

The ClearVac® Smoke Evacuation Pencil Attachment features a comfortable grip and lightweight tubing that takes the bulkiness out. It's a cost-effective solution to remove surgical smoke and comes prepackaged and sterile with GoldLine® rocker switch, push button, and foot control pencil configurations.

DR. ANTHONY HEDLEY

MD, FACS

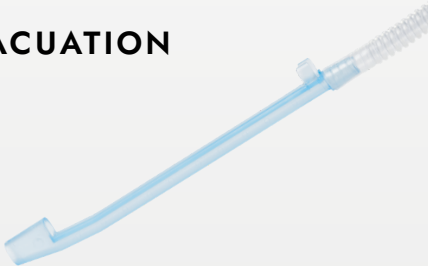
ORTHOPEDIC SURGEON, PHOENIX, AZ



Just over 3 years ago, at age 70, I underwent a life-saving lung transplant, something I believe was a result of a danger that is lurking in O.R.s across the country: surgical smoke, one of the largest unaddressed health hazards facing operating room staff today¹⁸

¹⁸Headley, A. 2018. Surgical Smoke Nearly Killed Me. Outpatient Surgery Magazine XIX, (2)

CLEARVAC® SMOKE EVACUATION PENCIL ATTACHMENT



- + Economical**

Cost effective solution to remove surgical smoke.
- + Easy to Use**

Comfortable grip, lightweight tubing and multiple configurations makes transition easier and meets your specific clinical needs.
- + Efficient Workflow**

Eliminates need for O.R. personnel to hold tubing.

ORDERING INFORMATION

Description	Qty/Case	Catalog Number
GOLDLINE® PENCIL WITH CLEARVAC® ATTACHMENT		
Push Button Electrosurgical Pencil Smoke Attachment with 4 ft of 10 mm Tubing and 6 ft of 7/8" (22 mm) Tubing, UltraClean® Blade Electrode, Holster, Single Use, Sterile	10	60-6828-005A
Rocker Switch Electrosurgical Pencil Smoke Attachment with 4 ft of 10 mm Tubing and 6 ft of 7/8" (22 mm) Tubing, UltraClean® Blade Electrode, Holster, Single Use, Sterile	10	60-6829-005A



LAPAROSCOPIC SOLUTIONS

PERFORM WITH PRESERVED VISUALIZATION

PLUMEPORT®

Our extensive line of passive and active laparoscopic smoke management devices, each PlumePort® device provides a different clinical application to fit any need.

PLUMEPORT® ACTIV®

PlumePort® ActiV® is designed for safe, effective removal of surgical smoke during laparoscopic procedures, easily attaching to standard trocars and utilizing suction systems providing noiseless operation.



- | | | |
|---|--|---|
| <p>+ Active Smoke Removal</p> <p>Controlled management of smoke throughout the surgical procedure featuring flow control dial with one hand adjustability.</p> | <p>+ Up to 50% More Flow</p> <p>Provides greater flow than passive laparoscopic devices.*</p> | <p>+ Compact Housing Design</p> <p>Contains built-in fluid trap, flow adjustment valve and filtration.</p> |
| <p>+ Moisture Management</p> <p>Built-in fluid trap to manage moisture throughout entire procedure.</p> | <p>+ Integrated ULPA Filtration</p> <p>Coupled with activated carbon to safely filter peritoneal smoke.</p> | <p>+ Universal Connectivity</p> <p>Easily attaches to standard luer lock fittings and suction systems.</p> |
| <p>+ Noiseless Operation</p> | | |

* Data on file.



PLUMEPORT®

PlumePort® is a passive laparoscopic smoke filtration device with integrated ULPA filtration coupled with activated carbon to safely filter smoke during laparoscopy.



+ Improves Visibility

Safely filters surgical smoke improving surgeon's visibility, while protecting staff and patients from airborne hazards.

+ Adjustment Flow Control

Lightweight design and integral control maintains peritoneal distention.

+ Moisture Management

With an integrated fluid trap and wicking materials, moisture is effectively managed to ensure the integrity of the filtration media.

+ ULPA Filtration

Designed to filter 0.1 – 0.2 µm particulate at 99.999% efficiency.*

+ Activated Carbon

Incorporates activated carbon known to adsorb gases.

+ Universal Connectivity

Easily connects to all standard luer lock fittings.

* Data on file.

PLUMEPOR[®] SEO

With an embedded Flow Restrictor, PlumePort[®] SEO provides fast and safe smoke management while maintaining peritoneal distention.



+ Universal Connectivity

Easily connects from a standard trocar to a smoke evacuator.

+ Hands-Free Operation

No additional adjustments required after setup.



ORDERING INFORMATION

Description	Qty/Case	Catalog Number
PLUMEPORT® ACTIV®		
Active Laparoscopic Smoke Management Device, 10 ft	10	PP010CS
PLUMEPORT®		
Passive Laparoscopic Smoke Management Device	10	PP010
PLUMEPORT® SEO		
Laparoscopic Smoke Management Tubing, 10 ft	12	PP012SEO



TUBING AND ACCESSORIES

OPTIMIZE YOUR SMOKE EVACUATION

TUBING

CONMED offers a comprehensive portfolio of surgical smoke evacuation tubing and tubing reducers that can accommodate most clinical applications.

SAGES

GUIDANCE ON SMOKE EVACUATION:

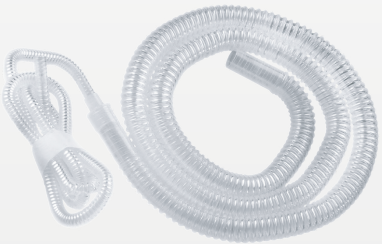


Currently, the best practice for mitigating possible infectious transmission during open, laparoscopic and endoscopic procedures is to use a multi-faceted approach, which includes proper room filtration and ventilation, appropriate PPE, and ***smoke evacuation devices with a suction and filtration system***,¹⁹ as available.”

¹⁹Dobrogowski, M., Wesolowski, W., Kucharska, M., Sapota, A., & Pomorski, L. S. (2014). Chemical Composition of Surgical Smoke Formed in The Abdominal Cavity During Laparoscopic Cholecystectomy – Assessment of the Risk to the Patient International Journal of Occupational Medicine and Environmental Health 2014;27(2):314 – 325 <http://dx.doi.org/10.2478/s13382-014-0250-3>

TUBING

Our tubing comes in a variety of lengths, diameters, and sterility choices.



+ Sterile and Non-Sterile Options

+ Specialty Application Tubing

+ Wide Diameter Range

1/4” to 1 - 3/8”

+ Variety of Lengths

ORDERING INFORMATION

Description	Qty/Case	Catalog Number
STERILE		
3/8" (9.5 mm) Diameter		
10 ft (3.0 m)	10	VT38S1010
7/8" (22 mm) Diameter		
6 ft (1.8 m)	24	VT10424
10 ft (3.0 m)	24	VT10624
6 ft (1.8 m) – Integral Wand and Sponge Guard	24	VTWT424
10 ft (3.0 m) – Integral Wand and Sponge Guard	24	VTWT624
14 ft (4.3 m) – Integral Wand and Sponge Guard	5	VTWT805
1-1/4" (32 mm) Diameter		
6 ft (1.8 m)	6	VT10206
6 ft (1.8 m) – Integral Wand and Sponge Guard	6	VTWT206
1-3/8" (35 mm) Diameter		
6 ft (1.8 m) – Integral Wand and Sponge Guard	5	VTWT505

Description	Qty/Case	Catalog Number
STERILE SPECIALTY		
8 ft (2.4 m) Total Length – 7/8" (22 mm) x 6 ft (1.8 m) tubing with reducer to 1/4" (6.4mm) x 2 ft (0.6 m) tubing	5	VTESU05

ORDERING INFORMATION

Description	Qty/Case	Catalog Number
NON-STERILE		
7/8" (22 mm) Diameter		
6 ft (1.8 m)	6	VT78-6
6 ft (1.8 m) – Includes 12 Tubing-toTubing Connectors	24	VT10324
1-1/4" (32 mm) Diameter		
10 ft (3.0 m)	6	VT10306

Description	Qty/Case	Catalog Number
NON-STERILE SPECIALTY		
8 ft (2.4 m) Total length – 7/8" (22 mm) x 6ft (1.8 m) tubing with reducer to 1/4" (6.4mm) x 2 ft (0.6 m) tubing	5	PSFTS05

EZLINK®

EZLink®, an automatic activation device, can be used to remotely turn all CONMED smoke evacuators on and off, maximizing filter life.



+ **Extended Activation**

Adjustable run time allows for capture of residual smoke.

+ **Convenient Set-Up**

Multiple cautery pencils can be accommodated with one EZLink® device.

+ **Compatibility**

Works on all CONMED smoke evacuation systems, and some competitive smoke evacuators.

+ **Remote Activation**

Remotely turn smoke evacuator on and off in conjunction with an electrosurgical unit.

DIRECT CONNECT CABLE

Physically connects to your electrosurgical unit to automatically activate your CONMED smoke evacuator.



+ **Easy Set-Up**

Requires no programming.

+ **ESU Compatibility**

Compatible with certain CONMED and Covidien ESU models.

VIROSAFE® FLUID TRAP

Designed to capture fluids and particulate to help maintain the integrity of any ViroSafe® Filter.



+ Capacity

Holds up to 100 cc of fluid with simple to read measurement increments.

+ Intuitive Design

7/8", 3/8", and 1/4" connection ports and dedicated tabs to store caps during use.

Y ADAPTER

Plug two accessories into one filter port.



+ Compatibility

Compatible with most, standard 22 mm smoke evacuation accessories.

+ Saves Space

Overcomes the need for additional capital.

ORDERING INFORMATION

Description	Qty/Case	Catalog Number
EZLINK®		
EZLink®	1	EZLINK01
VIROSAFE® FLUID TRAP		
7/8" (22 mm) and 1/4" (6.4 VSFT10 mm) tubing connection ports. Fits 7/8" (22 mm) port of Buffalo Filter ViroSafe® Filters	10	VSFT10
DIRECT CONNECT CABLE		
For CONMED Electrosurgical Units (certain models only) and Buffalo Filter Smoke Evacuators	1	DCCM01
For Covidien Electrosurgical Units (certain models only) and Buffalo Filter Smoke Evacuators	1	DCC0V01
Y ADAPTER		
22 mm connection to two 22 mm connectors	1	ADP22X22Y



OTHER ACCESSORIES

Description	Qty/Case	Catalog Number
PNEUMATIC FOOTSWITCH		
10 ft length	1	FS10004

Description	Qty/Case	Catalog Number
ARMSTAND		
710" (25.4 cm) x 10" (25.4 cm) x 34" (86.4 cm)	1	ARMSTAND
EVACUCART™		
15" (38.1 cm) x 17.5" (44.5 cm) x 32" (81.3 cm)	1	ETC01
VIROVAC® WALL MOUNT KIT		
Wall mount kit designed for ViroVac® surgical smoke evacuator	1	VVWM01

www.CONMED.com

THE CHOICE IS IN YOUR HANDS.



CONMED Corporation | 11311 Concept Blvd., Largo, FL 33773 | www.CONMED.com



Service & Support