



Shoulder Restoration System™

The Shoulder Restoration System™ from CONMED provides comprehensive solutions for complex procedures – designed to deliver the best outcomes to surgeons, OR staff, hospitals and the patients they treat.



*Advancing the Future of
Minimally Invasive and
Orthopaedic Surgery.*

Together.



Advancing the Future of Shoulder Arthroscopy

At CONMED, we believe every product we create should be an answer, a solution to a challenge that our customers face. That's why for over 50 years, we've partnered directly with surgeons to develop a complete portfolio of the most forward-thinking, high-performance products available today in shoulder arthroscopy.

Whether it's innovative anchors that provide better placement options and less bone removal, allograft extracellular matrices that can improve healing rates^{1,2} or visualization technology that lets you see like never before – CONMED's Shoulder Restoration System is the comprehensive solution you need to help you achieve the best patient outcomes.

With surgeons like you, we are:

Advancing the Future of Minimally Invasive and Orthopaedic Surgery. Together.

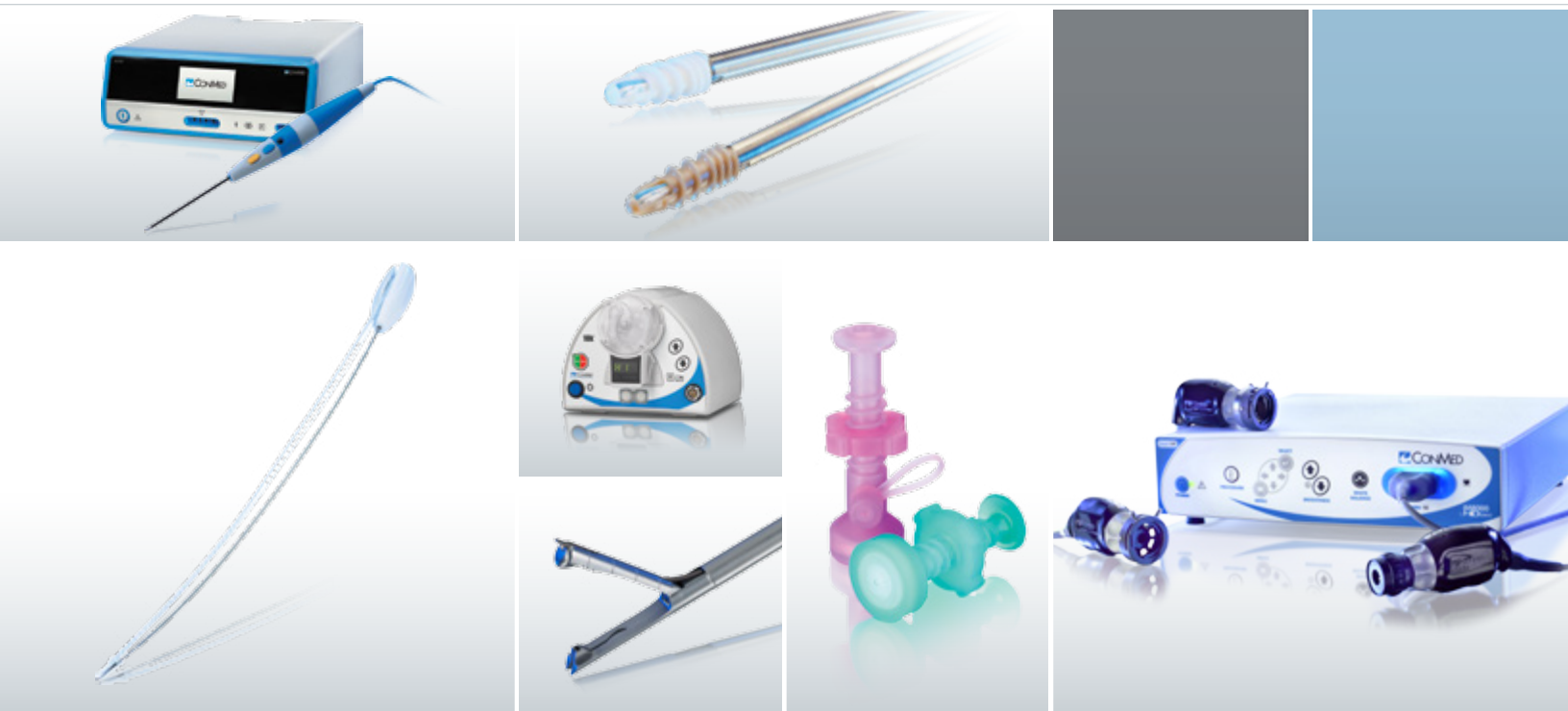


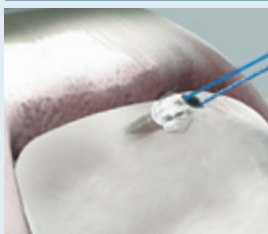
Table of Contents

Rotator Cuff Repair.....	4-7
Instability Repair	8-10
Biceps Tenodesis	11
Suture Passing	12
Arthroscopic Manual Instruments.....	13
Arthroscopic Cannulas	14
Hi-Fi Suture	15
Positioning.....	16
Visualization	17
Resection	18
Ablation.....	19

SHOULDER
RESTORATION
SYSTEM™



SHOULDER
RESTORATION
SYSTEM™

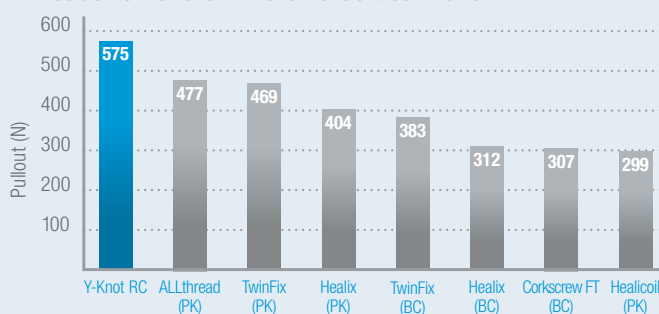


Y-Knot® RC All-Suture
Anchors Feature 360°
Formfit™ Fixation

Y-Knot® RC Self-Punching All-Suture Anchor System

With strong fixation, less bone removal and a simple, self-punching technique, the Y-Knot® RC helps overcome the trade-offs of other rotator cuff fixation methods. Currently the only self-punching all-suture anchor available, Y-Knot RC anchors can help streamline procedures with a fast efficient technique that eliminates the need to create and find a pilot hole. In addition to requiring less bone removal than larger traditional anchors, the small 2.8mm footprint provides placement and fixation advantages when bone real estate is limited, especially during revisions.

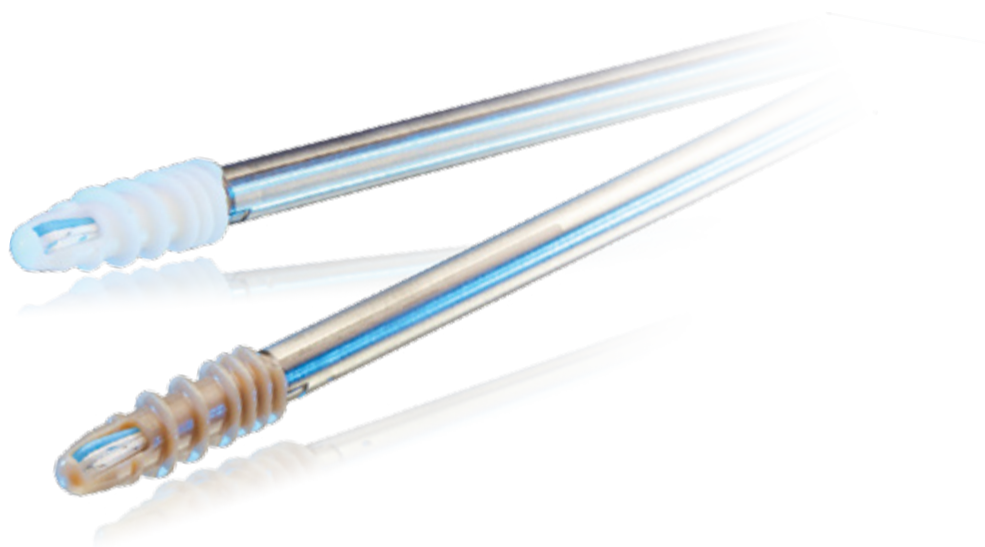
Loads-to-Failure in Porcine Cortical Bone^{1,2}



In addition to the preferable 2.8mm footprint, these anchors deploy to 5.0mm under the cortex for firm fixation even in soft bone.

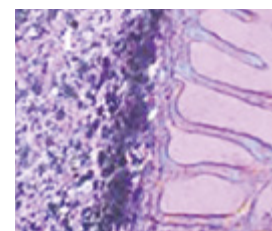
Y-Knot® RC with two strands of #2 Hi-Fi®	YRC02
Y-Knot RC with three strands of #2 Hi-Fi	YRC03

¹Data on File. Y-Knot RC (triple-loaded) and Arthrex Corkscrew® FT (double-loaded) tested in porcine cortical bone. ²Barber, FA. et al. Arthroscopy, 2013.



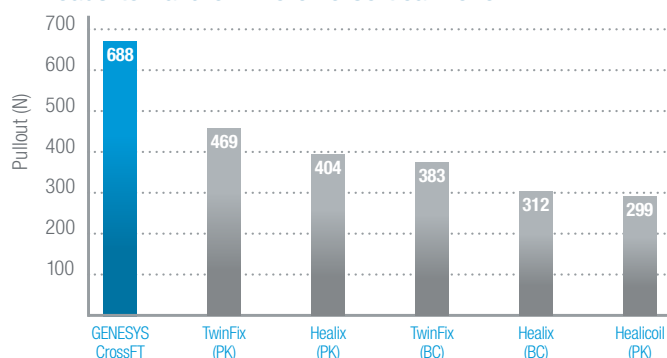
CrossFT™ and GENESYS CrossFT™ Suture Anchors

Now with blue suture, the CrossFT™ (PEEK) and GENESYS™ CrossFT (biocomposite) fully threaded suture anchors provide the combination of strength and reliability seldom found in other anchors. The cortical and cancellous threads provide industry-leading pullout strength. The anchor cannulation may channel growth factors to the healing tendon. The GENESYS CrossFT anchor is composed of innovative GENESYS biocomposite material with proven bone in-growth³ and exceptional pullout strength⁴.



GENESYS™ Implant Showing Bone In-Growth

Loads-to-Failure in Porcine Cortical Bone⁴



	Double-Loaded		Triple-Loaded	
	w/o Needles	w/ Needles	w/o Needles	w/ Needles
4.5mm CrossFT™ Suture Anchor	CFP-4502B	CFP-4502NB	CFP-4503B	CFP-4503NB
5.5mm CrossFT Suture Anchor	CFP-5502B	CFP-5502NB	CFP-5503B	CFP-5503NB
6.5mm CrossFT Suture Anchor	CFP-6502B	CFP-6502NB	CFP-6503B	CFP-6503NB
4.5mm GENESYS™ CrossFT Suture Anchor	CFBC-4502B	CFBC-4502NB	CFBC-4503B	CFBC-4503NB
5.5mm GENESYS CrossFT Suture Anchor	CFBC-5502B	CFBC-5502NB	CFBC-5503B	CFBC-5503NB
6.5mm GENESYS CrossFT Suture Anchor	CFBC-6502B	CFBC-6502NB	CFBC-6503B	CFBC-6503NB

³Daculsi et al. Biomaterials 2011. ⁴Barber et al. Arthroscopy 2013.



PopLok® Knotless Suture Anchors

The all-PEEK PopLok® Knotless Suture Anchors provide reliable and reproducible tendon-to-bone fixation for rotator cuff repair. The unique suture locking mechanism traps suture within the anchor, resulting in dependable fixation. The PopLok Knotless Suture Anchor also has the ability to tension the suture after the anchor is seated in the pilot hole. When the anchor is “popped,” the wings are deployed subcortically to provide secure fixation in the bone.

3.5mm PopLok®	CKP-3500
4.5mm PopLok	CKP-4500
3.5mm PopLok Punch	PKL-35M
4.5mm PopLok Punch	PKL-45M



Super Revo® FT and ThRevo® FT Suture Anchors

Now with blue suture, the Super Revo® FT and ThRevo® FT anchors are easy-to-use, fully-threaded, self-punching, titanium suture anchors. The Super Revo and ThRevo are the non-fully-threaded versions.

	Without Needles	With Needles
Super Revo® FT Suture Anchor w/two #2 Hi-Fi® Sutures	CF6140HB	CF6140HNB
ThRevo® FT Suture Anchor w/three #2 Hi-Fi Sutures	CF6160HB	CF6160HNB
Super Revo Suture Anchor w/two #2 Hi-Fi Sutures	C6140HB	
ThRevo Suture Anchor w/three #2 Hi-Fi Sutures	C6160HB	



Alloparch HD® Acellular Human Dermis

Recent peer-reviewed research has shown that augmenting a repair with an allograft scaffold can help improve success rates.¹ In fact, repairs using Human Acellular Dermal Matrices have shown success rates of 85.7% in massive rotator cuff repairs.^{1,2}

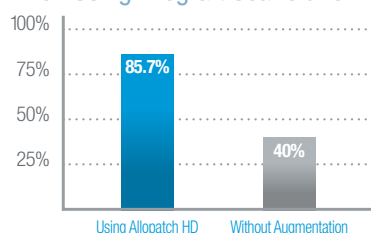
Through a partnership with MTF, CONMED provides surgeons with a proven, high-quality extracellular matrix (ECM) scaffold that delivers distinct advantages over other available options.

Alloparch HD® is minimally processed, which better preserves and maintains the graft's natural biomechanical and biochemical properties. Unlike other ECMs that need to be hydrated for 60 minutes or more before being used, delaying procedure completion and prolonging OR time, Alloparch HD requires no refrigeration or hydration and is ready to use off the shelf almost immediately.

In partnership with
MTF Musculoskeletal
Transplant
Foundation

SHOULDER
RESTORATION
SYSTEM™

Success Rate of Large Revision Rotator Cuff Tears
When Using Allograft Scaffold for Augmentation^{1,2}

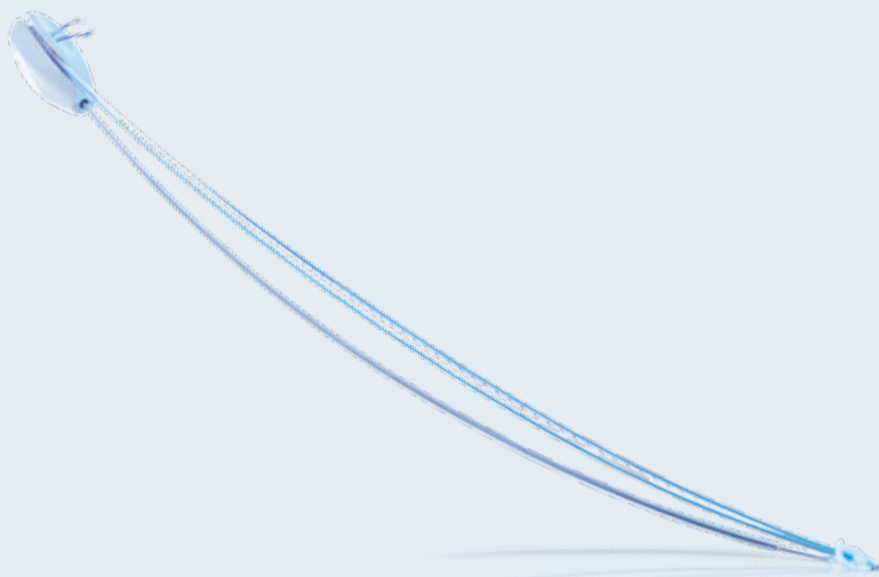


MTF has one of the most stringent donor selection standards of any tissue bank in the world, helping ensure tissue of the highest quality.

	Hydrated	Dehydrated
5cm x 5cm, Thick (0.8mm - 1.7mm)	471505	371505
5cm x 5cm, Ultra Thick (1.8mm - 3.9mm)	472505	

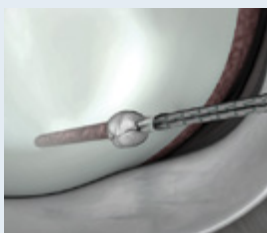
For a complete listing of Alloparch HD contact your CONMED sales representative.

¹Barber et al. Arthroscopy, 2012. ²Agrawal V. Int J Shoulder Surg, 2012.

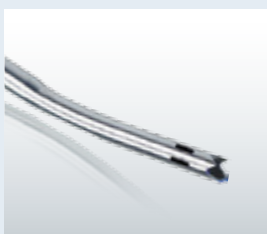


Y-Knot® Flex All-Suture Anchor System

With the market's smallest double-loaded anchor¹ and innovative instrumentation, the Y-Knot Flex System was designed to help achieve optimal anchor placement. The anchors provide 55% greater fixation strength than conventional 3.0mm press fit anchors while removing up to 80% less bone.¹ The curved and percutaneous delivery systems enable delivery around a curve and perpendicular placement for posterior SLAP and inferior Bankart repairs.

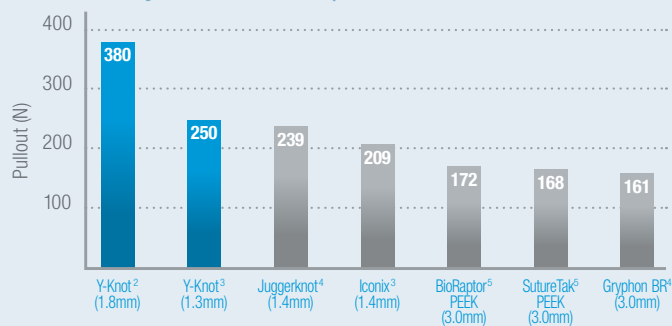


1.3mm Single-loaded



Curved Drill Guide

Loads-to-Failure in Porcine Cortical Bone Commonly Used Labral Repair Anchors¹



Y-Knot® Flex 1.3mm with one strand of #2 Hi-Fi® (white-blue)

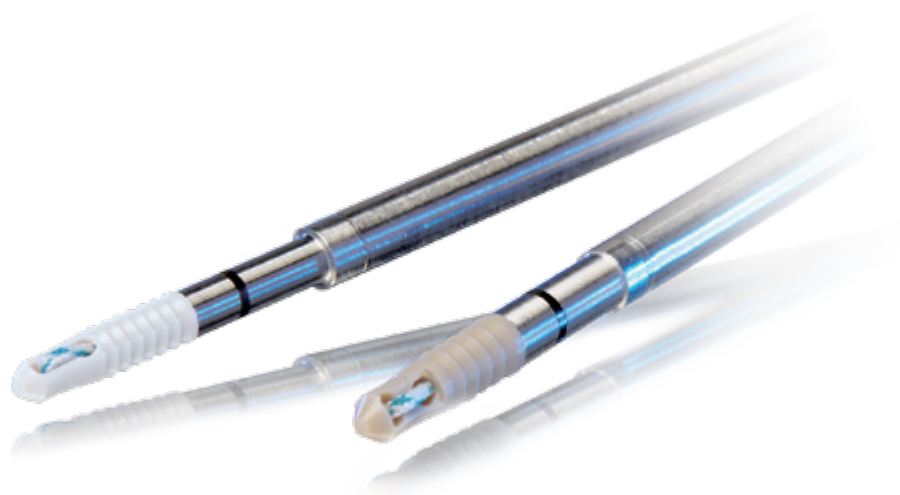
Y1301

NEW

Y-Knot® Flex 1.8mm with two strands of #2 Hi-Fi (blue, white-black)

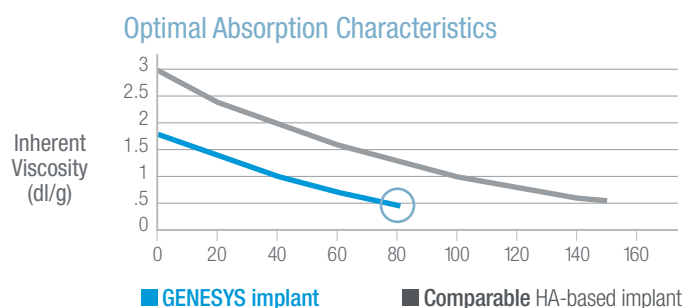
Y1802A

Curved, percutaneous, fishmouth and crown guide options are available.

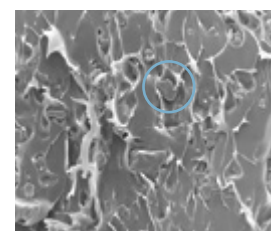


PressFT™ and GENESYS™ PressFT™ Suture Anchors

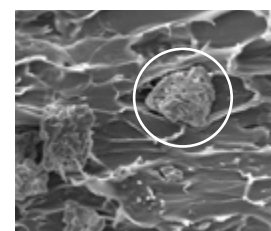
For surgeons who need strong fixation in a small footprint, the PressFT™ Suture Anchors combine small size with exceptional strength. The implant comes single or double-loaded with Hi-Fi® suture and is available in PEEK or GENESYS™ biocomposite material.



When the inherent viscosity of an implant is in the 0.6 to 0.8 dl/g range, a critical degradation of mechanical properties occurs. GENESYS biocomposite breaks down approximately twice as fast as some HA-based biocomposites while maintaining strength throughout the healing period.⁶



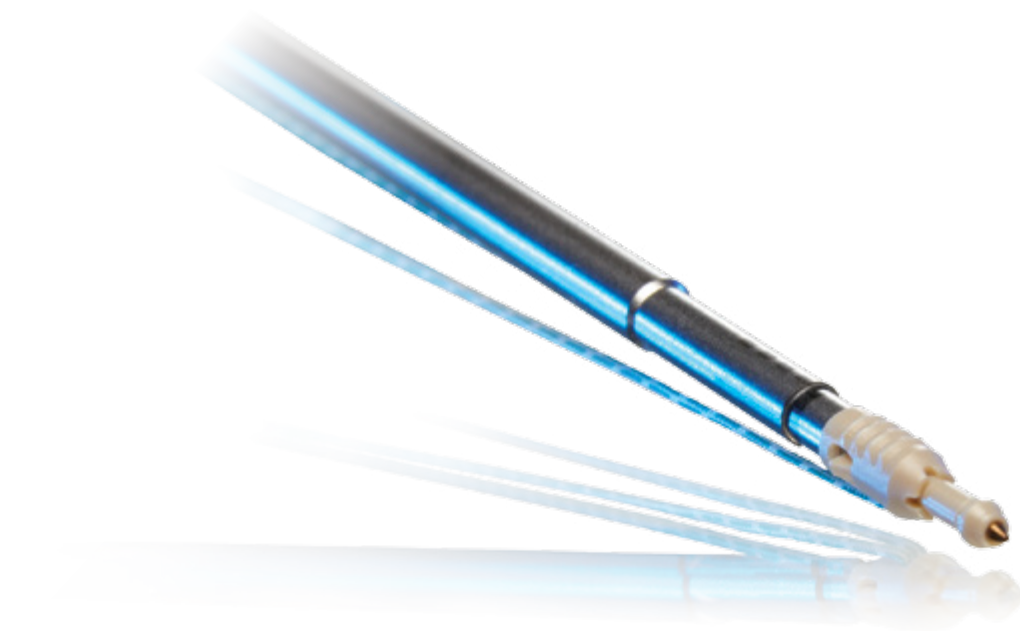
GENESYS™ (microTCP material)
magnification 500x



STANDARD (β-TCP material)
magnification 500x

PressFT™ 2.1mm Anchor w/one strand of #2 Hi-Fi®	NP211
PressFT 2.6mm Anchor w/one strand of #2 Hi-Fi	NP261
GENESYS™ PressFT™ 2.1mm Anchor w/one strand of #2 Hi-Fi	NB211
GENESYS PressFT 2.6mm Anchor w/one strand of #2 Hi-Fi	NB261

⁶Barber et al. Osteoarticular and Dental Tissue Engineering Research Center, 2011.



SHOULDER
RESTORATION
SYSTEM™



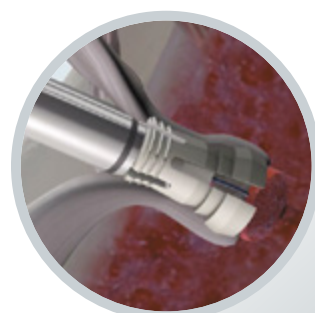
PopLok® Handle

PopLok® Knotless Suture Anchors

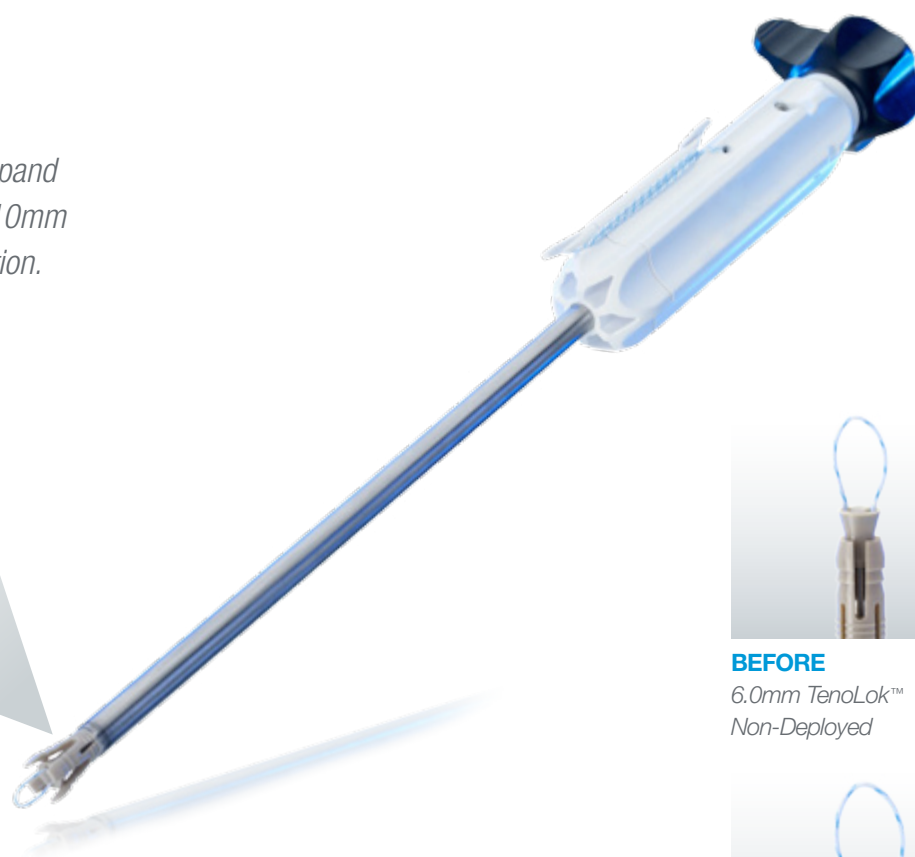
The all-PEEK PopLok® Knotless Suture Anchors provide strength and reliability for instability repairs. The sutures of PopLok anchors are locked within the anchor construct itself - meaning that fixation is less dependent upon bone quality for more consistent and reliable implantation. The anchor's innovative design allows surgeons to adjust suture tension once the anchor is seated in the pilot hole for maximum flexibility.

2.8mm PopLok® w/one #2 Hi-Fi® Suture	GKP-2801
3.3mm PopLok w/one #2 Hi-Fi Suture	GKP-3301
PopLok 2.8/3.3mm Drill Bit	BKL-00M
PopLok Guide	BGU-00M
PopLok Obturator	BTR-00M

6.0mm TenoLok™ anchors expand to 7.5mm in the cortex and 10mm sub-cortically for secure fixation.



**Cross Section
with tendon**



BEFORE
6.0mm TenoLok™
Non-Deployed



AFTER
6.0mm TenoLok™
Deployed

NEW

TenoLok™ Dual Expanding Tenodesis Anchor

A new addition to CONMED's Shoulder Restoration System™, the versatile new TenoLok™ Dual Expanding Tenodesis anchor is used for tenodesis procedures. The TenoLok is designed to provide strong tendon-to-bone fixation, reduced tendon damage and tendon wrap as well as a fast, efficient technique.

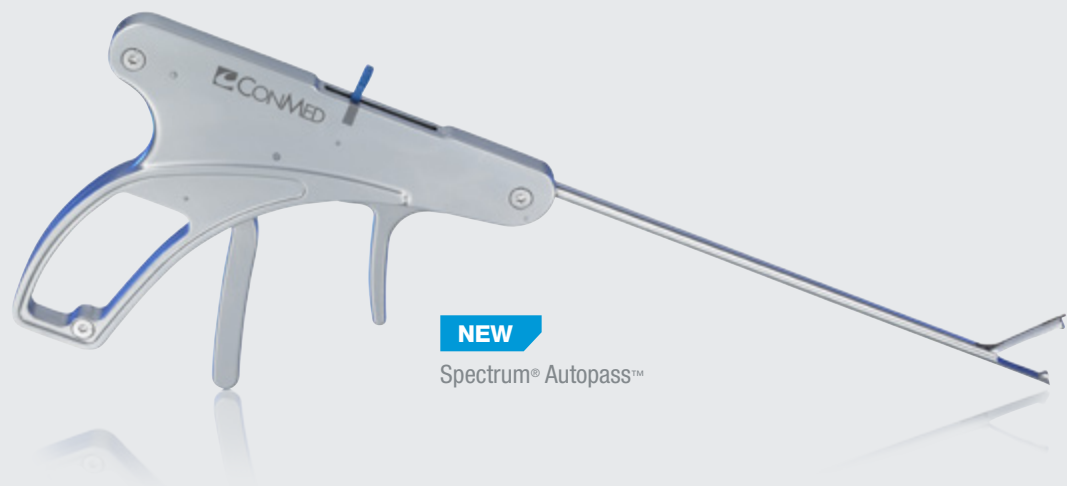
Anchors

5.0mm TenoLok™ Tenodesis Anchor with one #2 Hi-Fi® Suture	T50S
6.0mm TenoLok Tenodesis Anchor with one #2 Hi-Fi® Suture	T60S
6.0mm TenoLok Tenodesis Anchor	T60A

Guide Pins and Reamers

9" High Strength Guide Pin (2.4mm diameter, Non-Sterile, 5/Box)	9742
9" High Strength Guide Pin (2.4mm diameter, Sterile, 5/Box)	9742D
6.5mm Badger® Reamer (Sterile, 4/Box)	C8593
7.0mm Badger® Reamer (Sterile, 4/Box)	C8582
7.5mm Badger® Reamer (Sterile, 4/Box)	8593
8.0mm Badger® Reamer (Sterile, 4/Box)	C8599

**SHOULDER
RESTORATION
SYSTEM™**



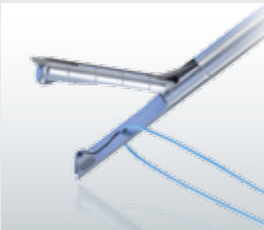
NEW

Spectrum® Autopass™

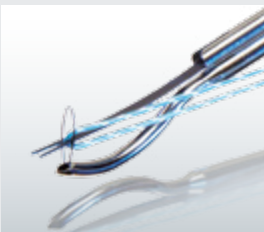
Spectrum® Autopass™ Suture Passer

The Spectrum® Autopass™ Suture Passer is the latest innovation in suture passing for rotator cuff repair. The Suture Passer provides simple, intuitive operation and constant surgeon control. The active window captures and retrieves suture for a simple one-handed pass. It fits down a 5.5mm cannula and is designed to be used with #2 Hi-Fi® suture.

Spectrum® Autopass™ Suture Passer	SMI-02AP
Spectrum® Autopass™ Suture Passer Needle	SMI-02D



Spectrum® Autopass™



Spectrum® MVP™



Spectrum® II Hooks

Spectrum® and Spectrum MVP™ Suture Passers

The Spectrum® family of suture passing instruments set the bar for precise, efficient, and versatile suture passing. The 1.8mm low profile suture hook of the Spectrum MVP™ device (pictured on the right) passes and retrieves suture without the need for a separate suture shuttling step, whereas the Spectrum II system offers a broad array of suture hook configurations covering a wide variety of suture passing needs.

Spectrum® MVP™ - Medium Crescent Hook - Disposable	C6400
Spectrum MVP - 45° Right Hook - Disposable	C6410
Spectrum MVP - 45° Left Hook - Disposable	C6420
Spectrum II Handle	C6350
Spectrum II Hook - 45° Right Hook - Disposable	C6380
Spectrum II Hook - 45° Left Hook - Disposable	C6381
Spectrum II Hook - Crescent, Medium Hook - Disposable	C6386

Additional Spectrum Suture Passer options are available.

**NEW**Seahawk™
Suture Passer

Manual Instruments

CONMED has set the standard for arthroscopic instrumentation with a reputation for precise and dependable manual instruments. From forceps and graspers to punches and probes, all the instruments in CONMED's extensive portfolio are available in a wide range of diameters and lengths for use in a variety of arthroscopic procedures.

Seahawk™ Suture Passer, Left	GU2000
Seahawk™ Suture Passer, Right	GU2001
Seahawk™ RC Suture Passer, Left	GU2002
Seahawk™ RC Suture Passer, Right	GU2003
Katana High-Strength Suture Cutter	GU1009
Grasping Forceps, 3.4mm dia., Straight w/Ratchet	11.1001
Suture Retrieval Forceps, 3.4mm dia.	16.1018
Raven™ Suture Retriever, Straight	GU1004
Raven Suture Retriever, 35° Up	GU1008
Knot Pusher	C6112

A complete listing of manual instruments are available.

SHOULDER RESTORATION SYSTEM™

Katana® High-Strength
Suture Cutter



Dry-Doc® Cannula



Hex Flex® Cannula



NEW ARC™
Adjustable Retractor Cannula

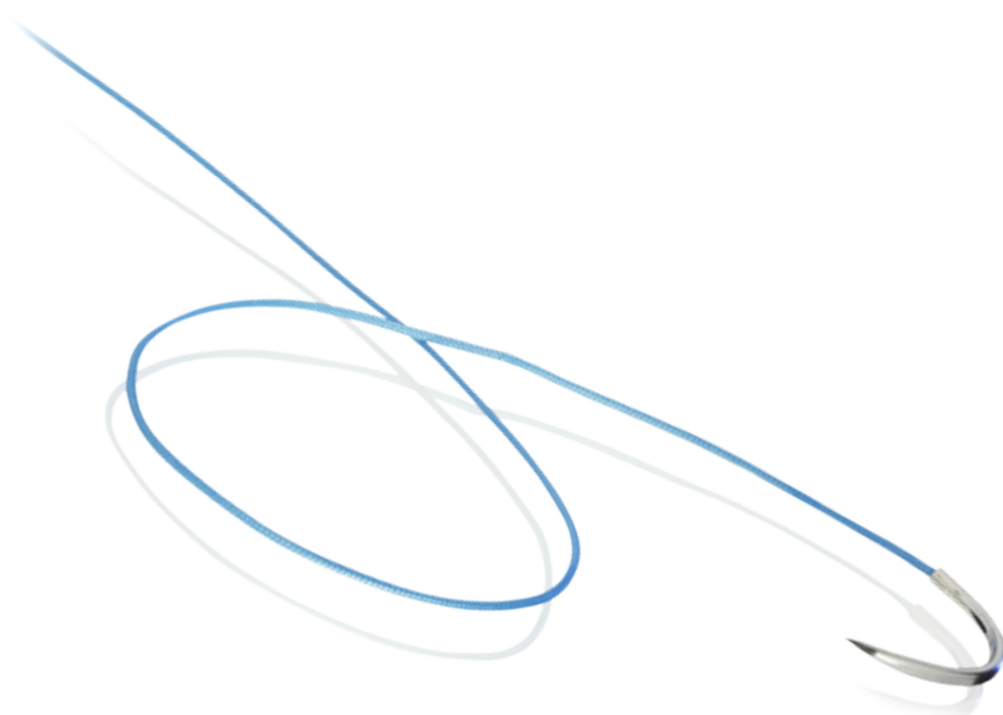
A true innovation, the unique design of CONMED's ARC Adjustable Retractor Cannula helps surgeons see more clearly, operate with greater range of motion and minimize cannula pull-out.

ARC™ Cannula, green	6 x 65mm	C06-65
ARC Cannula with outflow, green	6 x 85mm	C06-85
ARC Cannula, purple	8 x 65mm	C08-65
ARC Cannula with outflow, purple	8 x 85mm	C08-85
14cm Forceps, sterile	14cm	SU-9-0183-14

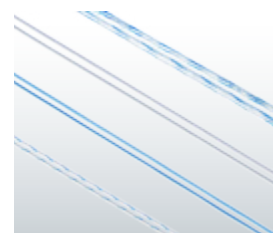
Additional Cannula's from CONMED's Cannula portfolio

Dry-Doc Cannula, Translucent Blue	7 x 85mm	C7360
Dry-Doc Cannula, Translucent Red	8 x 75mm	C7367
Dry-Doc Cannula, Translucent Yellow	8 x 85mm	C7368
Hex-Flex Cannula, Translucent Blue	7 x 85mm	C7465
Hex-Flex Cannula, Translucent Yellow	8 x 85mm	C7480
Universal Cannula, Grey	5.5 x 70mm	9718

A complete listing of cannulas are available.



SHOULDER
RESTORATION
SYSTEM™



#2 Hi-Fi Suture

#2 Hi-Fi® Suture

Ultra High Molecular Weight Polyethylene Suture

The suture-tendon interface represents a critical component of repair security in rotator cuff repair.¹ This braided, non-absorbable suture for soft tissue repair is designed to provide exceptional strength for knot tying while helping minimize tendon damage. In fact according to recent peer-reviewed literature, CONMED's #2 Hi-Fi® Suture was shown to reduce mean cutting rate by over 50% when compared to FiberWire and FiberTape, which were more abrasive on the suture-tendon interface and led to higher tendon tear-through.²

Hi-Fi suture size #2, single 40" strand, Blue, no needle	H6100
Hi-Fi suture size #2, single 40" strand, Blue, (needle: tapered, 26mm, ½ circle)	H6110T
Hi-Fi suture size #2, single 40" strand, Blue, (needle: reverse cutting, 26mm, ½ circle)	H6120RC
Hi-Fi suture size #2, two 40" strands, Blue and White-Black cobraid, (needles: tapered, 26mm, ½ circle)	H6210T
Hi-Fi suture size #2, two 40" strands, Blue and White-Black cobraid, no needles	H6200
Hi-Fi suture size #2, single 40" strand, Blue, (needle: reverse cutting, 40mm, ½ circle)	H6140RC
Hi-Fi suture size #2, single 40" strand, Blue, (2 needles, 1 on each end: tapered, 26mm, ½ circle)	H6150T2

A complete listing of Hi-Fi Sutures are available.



NEW AssistArm™ Limb Positioner

Tactile feel during arm movement is essential to assess ligament and muscle tension, as well as validate range of motion. The AssistArm™ delivers unparalleled precision for beach chair and lateral decubitus shoulder procedures. Using the traction unit in lateral decubitus, the surgeon is able to apply precise traction and rotation when and where needed. The surgical assist team does not need to hold the limb and can focus on other critical tasks. The AssistArm limb positioner can be used in shoulder arthroscopic and open shoulder surgeries, upper-limb trauma, and total shoulder arthroplasty.

- Hydraulic Power
- Lightweight from Carbon Fiber
- No Batteries, No Electrical or Compressed Air Hookups



Beach Chair



Lateral Decubitus

Positioner	
AssistArm Surgical Positioner	AA-PSN100
Attachments	
AssistArm Arm Support for Beach Chair	AA-AS-BC200
AssistArm Connector	AA-CON250
AssistArm Traction Unit	AA-TRAC400
AssistArm Arm Support for Lateral Decubitus	AA-AS-LD500
Disposables	
AssistArm Sterile Kit for Shoulder and Knee (Pack of 10)	AA-SK-KIT10
Additional attachments are available for knee and ankle.	



IM8000 & LS8000

True HD 3MOS Camera System and Direct LED Light Source

High-definition CMOS camera chip technology is the latest on the market with enhanced image processing that enables surgeons to more accurately view bone and soft tissue characteristics. This allows for quick identification of anatomical structures allowing surgeons to see clearly and deliver the best possible care for their patient.

Direct LED Light Source optimizes the image that the surgeon sees on the monitor. It helps to produce a clear view of the surgical site as well as a natural color spectrum by achieving consistent light output throughout its lifetime.

True HD 3MOS Camera Control Unit	IM8000
Autoclavable True HD 3MOS Camera Head, "Eyecup"	IM8120
Autoclavable True HD 3MOS Camera Head, "Cartidge"	M8121
Direct LED Light Source	LS8000
VP100X Camera System Tray Series (RADEL)	VP1003, VP1005 VP1006, VP1007
HD LED Medical Monitors (26" and 32")	VP4826, VP4832
HD Image Management System	DRSHD1080P
Video Cart	VP8500

A complete listing of HD scopes is available.



**SHOULDER
RESTORATION
SYSTEM™**



NEW

Ultra Dual Purpose Blades

Blades and Burs

Powered by a D4000™ console, CONMED offers a variety of sharp and efficient blades and burs designed specifically for shoulder arthroscopy applications. The Ultra Dual Purpose Blades are capable of both soft tissue resection and bone removal. The UltraFRR™ is the ideal blade to complete a subacromial decompression, rotator cuff repair, and general tissue and bone removal. For more aggression on bone, CONMED offers a wide portfolio of burs.

Straight Blades

Sterling® Great White®	4.2mm	9299A
Sterling Ultracut®	4.2mm	C9405A

Ultra Dual Purpose Blades

UltraGator™	4.2mm	DPS-C002
UltraFRR™	4.2mm	DPS-C010
UltraTiger™	4.2mm	DPS-C005

Burs

Oval Bur	4.0mm	H9101
Spherical Bur	5.5mm	H9112

Additional Blade and Bur options are available.

Fluid Management Systems

CONMED is the world leader in arthroscopic fluid management with its 10k® and 24k® pump consoles. The 24k pump offers inflow/outflow control capabilities, True Intra-articular Pressure Sensing (TIPS), and shaver suction control. Both pumps offer simple setup and priming with flow rates up to 2 liters per minute, and an EcoFlow® day-use tubing option that may increase efficiency in a busy OR.

24k® Pump	24k
10k® Pump	10k
Inflow Tubing	10k100
Inflow Tubing with Shaver Suction Line	10k150
Outflow Shaver Suction Line	24k100
Pressure Sensing Line	24kTIPS
EcoFlow® – Day-Use Pump Tubing	10k600
EcoFlow – Single-Use Patient Tubing	10k605

Additional tubing and accessory options are available.

SHOULDER RESTORATION SYSTEM™



Ergo™ Handpiece

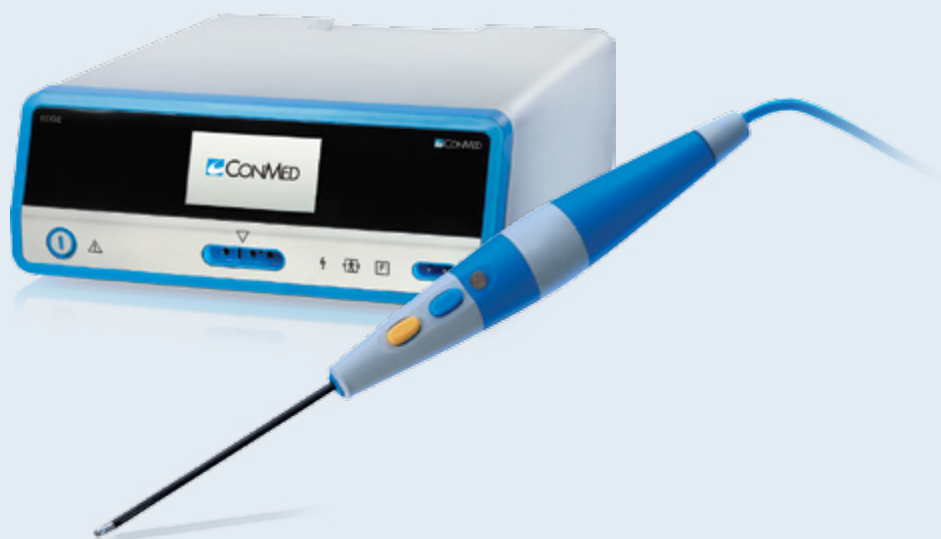


10k® Pump

SHOULDER RESTORATION SYSTEM™



EcoFlow® Tubing



NEW Edge™ Bi-Polar Arthroscopic RF System

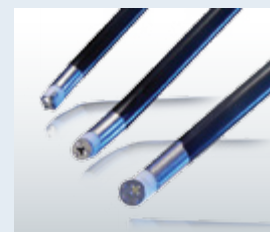
The Edge™ RF System is designed for performance, simplicity and safety. In addition to having all the features surgeons want in an arthroscopic RF system, like an intuitive touchscreen interface, the ergonomic handpiece and choice of hand or foot controls make Edge the most user-friendly RF system available. To improve patient safety, the system provides real-time measurement of the joint fluid temperature and will automatically shut off if a probe comes into close contact with any metal instruments. The single piece electrode design promotes probe integrity throughout the entire procedure.

EDGE™ Arthroscopic Energy Capital Equipment

Arthroscopic Energy Generator	AES -1
Arthroscopic Energy Foot Control	AES-FC
Arthroscopic Energy Wireless Foot Control	AES-WFC

EDGE Arthroscopic Energy Bipolar Probes

Arthroscopic Energy 90° Probe with Suction	AES-90S
Arthroscopic Energy 50° Probe with Suction	AES-50S
Arthroscopic Energy 30° Probe	AES-30



Bi-Polar Probes

**SHOULDER
RESTORATION
SYSTEM™**

CONMED Advantage Programs

CONMED provides three programs designed to offer pricing and procurement advantages that help overcome the budgetary and cash-flow roadblocks to equipping facilities with the new technology they need.

Advantage Placement

In exchange for a fixed-price disposables agreement, we'll place capital equipment in your institution at no charge. This program lets you use capital equipment financed by the disposables you already need for your procedures.

Advantage Rewards

With a new commitment for CONMED disposables, we give back a percentage as a credit that can be put toward any capital equipment purchase or service contract in our broad portfolio.

Advantage Finance

The Advantage Finance Program allows facilities to get new technology or service at fixed monthly payments – with no down payment.

To learn more about our Shoulder Restoration System and other innovative products, call **800-237-0169** or visit **SRS.CONMED.com**.



Shoulder Restoration System™

525 French Road
Utica, New York 13502

Local 727-392-6464
Toll Free 800-237-0169

SRS.CONMED.com
customer_service@conmed.com



Comprised of PEEK-OPTIMA® polymer from Invivo® Biomaterial Solutions. PEEK-OPTIMA® and Invivo® are registered trademarks of Invivo Ltd. All Rights are Reserved.

In partnership with



Allopatch HD® is a registered trademark of Musculoskeletal Transplant Foundation.