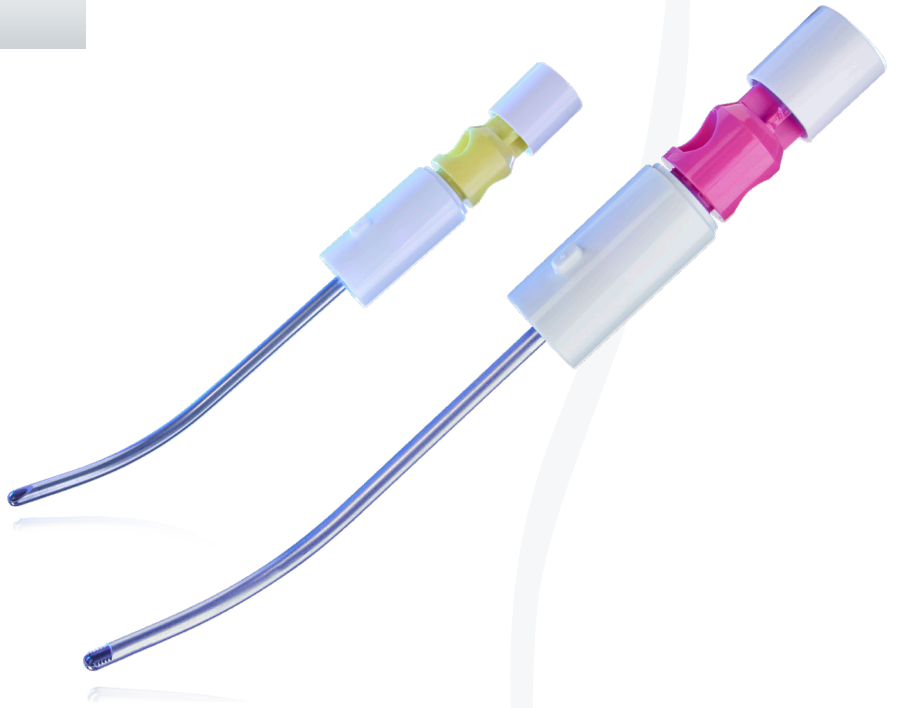
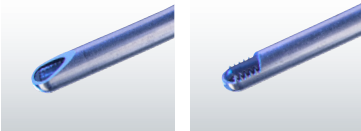




## Mimix™

The first blades developed specifically for small joint procedures, Mimix™ Small Joint Resection Blades have been uniquely engineered to mimic small joint anatomy and provide precise access in tight spaces. These blades are designed to simplify small joint resection, save time and reduce iatrogenic damage.



**CRYSTALVIEW™ PRO**  
FLUID MANAGEMENT SYSTEM



**HALL® MICROFREE®**  
CORDLESS POWER SYSTEM

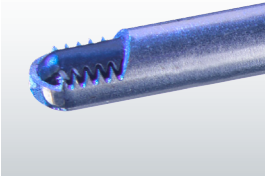


**TRUSHOT™ WITH Y-KNOT®**  
SMALL JOINT FIXATION SYSTEM



To learn more about these and other innovative products, call **866-CONMED** or visit **CONMED.com**

## SMALL JOINT RESECTION BLADES



COATED DISTAL TIP

# The Right Tool for the Job

## Designed for the Small Joint Anatomy

With Mimix™ Small Joint Resection Blades, surgeons no longer have to make do with resection blades that were originally designed for other joints. We worked with some of the world's foremost small joint surgeons to develop the first resection blades that are specifically tailored to mimic small joint anatomy. These blades feature a curvature that contours to the talus and working length that's designed to give surgeons easy, fast and precise access in tight anatomical spaces.

## Features and Benefits

Coating on distal cutting tip has a lower coefficient of friction than standard steel and has shown reduced metal particulate generation when compared to leading competitors.<sup>1,2,3</sup>

Available in 2.9mm and 3.5mm configurations for convenient access in tight spaces.

Unique 35° gradual bend designed to contour to the talus.

8cm working length to reach further than traditional 7cm small joint blades.

Designed to minimize the need for a posterior portal during ankle scopes.

*Mimix™ Blades are compatible with CONMED's resection portfolio including our ergonomically engineered Ergo™ Shaver Handpiece.*



## Anatomical Access Made Easy

The unique challenges of small joint anatomy create a difficult, tight environment for debridement. Traditional small joint shaver blades often require excessive torquing to reach around the talar dome. As is evident in this image, the 35° gradual bend of the Mimix blades is designed to maximize the limited space available for easier, more convenient access.

This access may also help reduce the potential of iatrogenic damage to surrounding tissue that could be caused by torquing a blade that was not specifically designed for that anatomy.



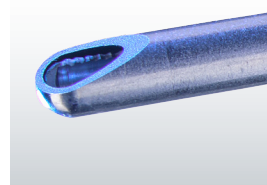
## A Full Portfolio for Multiple Procedures

Mimix Blades can be used in multiple applications, including:

- Ankle Fusion Prep
- Anterior Tibiotalar Impingement
- Osteochondral Lesions of the Talus
- Post-Traumatic Synovitis Debridement
- Cartilage Debridement during Arthrodesis

**Simplify your small joint resection by scheduling a demonstration with your local CONMED sales representative or visit [CONMED.com/Mimix](https://www.CONMED.com/Mimix) for more information.**

SMALL JOINT  
RESECTION  
BLADES



COATED DISTAL TIP



525 French Road, Utica, NY 13502

SMALL JOINT  
RESECTION  
BLADES

## Ordering Information

Description	Catalog Number
MIMIX 2.9MM X 8CM FULL RADIUS RESECTOR, 35 DEGREE, STEALTH	LE-29FRP
MIMIX 2.9MM X 8CM, CUDA, 35 DEGREE, STEALTH	LE-29CUP
MIMIX 3.5MM X 8CM FULL RADIUS RESECTOR, 35 DEGREE, STEALTH	LE-35FRP
MIMIX 3.5MM X 8CM, CUDA, 35 DEGREE, STEALTH	LE-35CUP

Customer Service: 1-866-4CONMED  
International Sales: 1-727-214-3000  
Fax: 1-800-438-3051

ConMed.com  
info@mail.conmed.com