

ELIMINATOR[®] PET Balloon Dilator

MULTI-STAGE INFLATION TECHNIQUE

For Use with ConMed[®] Eliminator[®] PET Balloon Dilators

THE ELIMINATOR ADVANTAGE

- No Burst Guarantee
- Accurate Sizing at Maximum Pressure
- No Waisting
- Valued Performance

REMEMBER TO:

PRIOR TO INFLATION

- Ensure 40 cc's of fluid are in the inflation device
- Lubricate the balloon
- Attach the inflation device AFTER the balloon has been passed down the scope

DEFLATION/REMOVAL

- Wait at least 60 seconds for deflation
- Ensure no liquid is still coming out of the balloon (check the inflation device)
- Ensure Inflation device is lower than the balloon to maximize gravitational forces

MULTI-STAGE INFLATION PRESSURE (PSI/ATM)

Balloon Size	Stage 1	Stage 2	Stage 3*
6 mm/18 Fr	60/4.1	90/6.1	120/8.2
8 mm/24 Fr	60/4.1	90/6.1	120/8.2
10 mm/30 Fr	45/3.1	68/4.6	90/6.1
12 mm/36 Fr	45/3.1	68/4.6	90/6.1
15 mm/45 Fr	30/2.0	45/3.1	60/4.1
18 mm/54 Fr	25/1.7	38/2.6	50/3.4
20 mm/60 Fr	25/1.7	38/2.6	50/3.4

*Maximum recommended inflation pressure



- Locate stricture in esophagus during EGD.



- Position Eliminator balloon dilator at the center of the stricture.

3

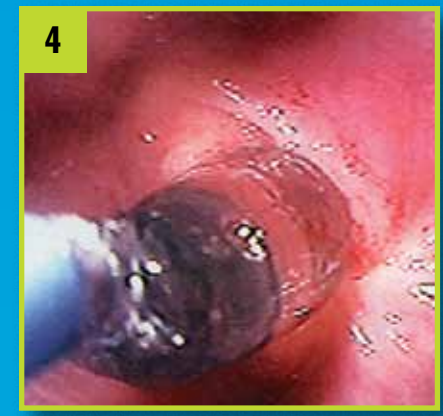
STAGE 1
50% maximum recommended pressure

STAGE 2
75% maximum recommended pressure

STAGE 3
Maximum recommended pressure

Note: The 60 cc syringe must be filled with 40 cc of fluid for proper inflation and adequate vacuum.

- Inflated dilator with water or contrast/water to 5 psi (0.4 atm) then proceed as outlined below, maintaining pressure for 30-60 seconds for each stage.



- Maintain inflated balloon dilator in stricture for desired length of time.



- Deflate balloon dilator under direct vision. Do not retract into endoscope until all fluid is withdrawn.



- Observe dilated stricture.

Eliminator[®] PET Biliary Balloon Dilators

Sterile, Disposable

Catalog Number	Description	Balloon Inflation	Length	Catheter		Guidewire		Unit
		Pressure		O.D.	Length	Compatibility		
000347	4mm x 2cm	150 psi/10.2 atm	2cm	5 F/1.7mm	180cm	035"/.89mm	1/Box	
000348	6mm x 2cm	150 psi/10.2 atm	2cm	5 F/1.7mm	180cm	.035"/.89mm	1/Box	
000349	8mm x 3cm	120 psi/8.2 atm	3cm	5 F/1.7mm	180cm	035"/.89mm	1/Box	

Prior to use please consult product labels and inserts for any indications, contraindications, warnings, precautions, adverse reactions, and instructions for use.

© 2007 ConMed Endoscopic Technologies a Subsidiary of ConMed Corporation
525 French Road • Utica, NY 13502-5994
(315) 797-8375 • Customer Service: 1-800-448-6506
International Sales: +(315) 797-8375 • FAX: +(315) 735-6235

www.ConMed.com

9/2007, Control #12630 Rev. B, MOS 9073

Applied Ingenuity™

CONMED™
ENDOSCOPIC TECHNOLOGIES