

YOU'RE INVITED TO



# THE **BioBrace**®

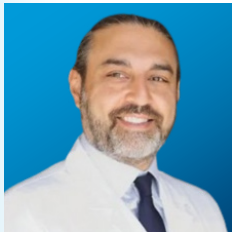
## ADVANCED AUGMENTATION COURSE

CONMED Learning Center | March 24-25 | Clearwater, FL

BioBrace® is an innovative solution designed to add strength and healing to your repairs. Join our surgeon faculty as they share insights on the science, protocol for application, and techniques for using BioBrace® in Knee and Shoulder procedures.

### LED BY ESTEEMED FACULTY:

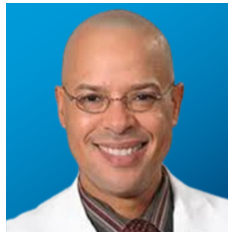
\* Surgeon faculty are paid CONMED consultants



Shariff K. Bishai, DO  
Associated Orthopedics of  
Detroit



Joseph Burns, MD  
Wellstar Health System



Deryk Jones, MD  
Ochsner Sports Medicine  
Institute



Sean McMillan, DO  
Virtua Orthopedics



Scott Sigman, MD  
Orthopedic Laser Centers

## REGISTER NOW!



*Strengthen Your Repairs, Optimize Your Healing*



5 mm x 250 mm



23 mm x 30 mm

