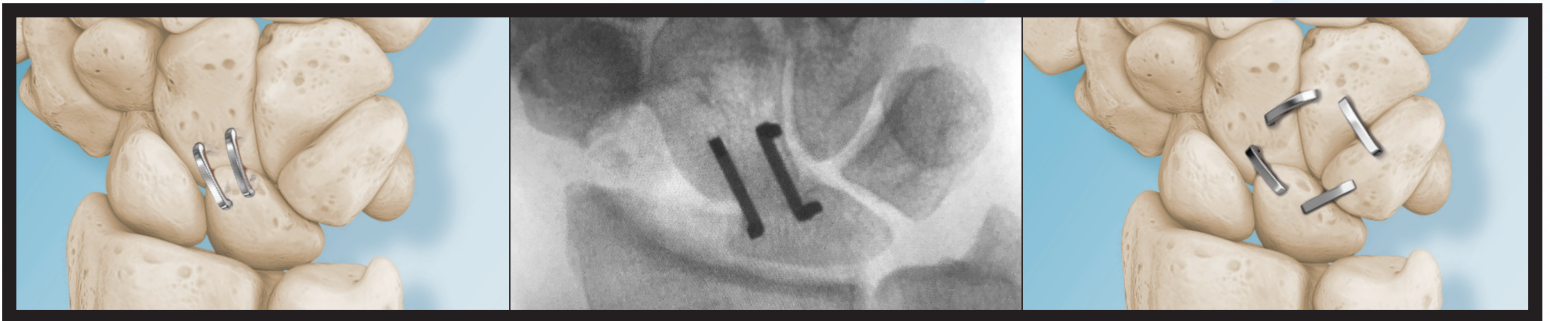


SUPERELASTIC COMPRESSION STAPLE

NeoSpan® SE



Sterile, Implant Kit with Single Use Instrumentation



Low-profile, Constant Compressive Force



Inside / Outside Stepped-tooth Design Resists Pull-out



A GLOBAL EXTREMITY COMPANY

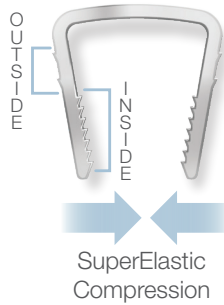
STERILE, IMPLANT KIT WITH SINGLE USE INSTRUMENTATION

SUPERELASTIC COMPRESSION STAPLE NeoSpan® SE



The NeoSpan® SE Compression Staples are designed to deliver constant active compression and feature:

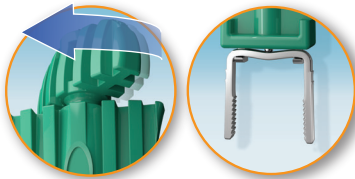
- Low-profile
- Inside / outside stepped-tooth design that resists pull-out
- Available in multiple sizes from 8 to 25mm



STERILE, IMPLANT KIT WITH SINGLE USE INSTRUMENTATION

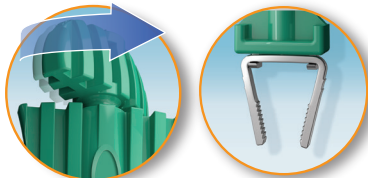
CAT NO.	DESCRIPTION	SIZE: A x B x C
T50 SN008....	Staple / Instruments	8x8x8mm
T50 SN010....	Staple / Instruments	10x10x10mm
T50 SN110....	Staple / Instruments	10x15x13mm
T50 SN012....	Staple / Instruments	12x12x12mm
T50 SN112....	Staple / Instruments	12x15x13mm
T50 SN015....	Staple / Instruments	15x12x12mm
T50 SN115....	Staple / Instruments	15wx15x15mm
T50 SN018....	Staple / Instruments	18x16x16mm
T50 SN020....	Staple / Instruments	20x20x20mm
T50 SN025....	Staple / Instruments	25x22x22mm
T05 S0001	NeoSpan Staple Sizer	Optional

EASY TO USE STAPLE INSERTER



Compression / Straight

With the Staple firmly in the Inserter's metal prongs, slowly twist the top handle **clockwise** extending the internal plunger to spread the Staple's legs.

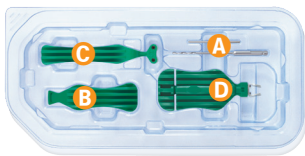


Release

Slowly twist the top handle **counter clockwise** to release the Staple from the Inserter

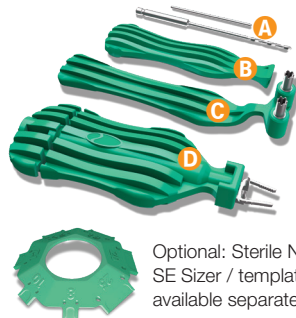


STERILE, SINGLE USE IMPLANT KIT / INSTRUMENTATION



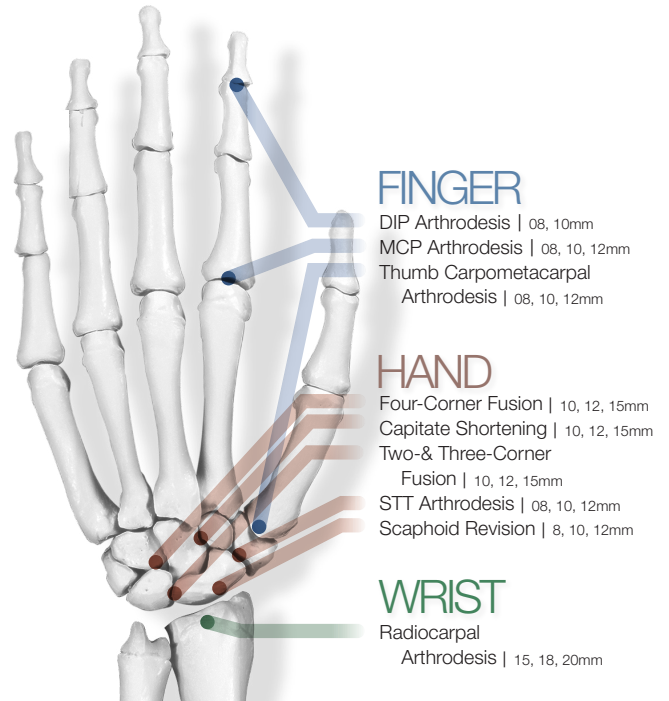
Sterile Delivery Pack with Disposable Instrumentation;

- A** Locator Pin, Drill
- B** Tamp, **C** Drill Guide,
- D** Inserter with Staple



Optional: Sterile NeoSpan SE Sizer / template available separately

TYPICAL FRACTURES AND OSTEOTOMIES



All content contained herein is furnished for informational purposes only. In2Bones does not recommend a particular surgical product or procedure suitable for all patients. Each surgeon must evaluate the appropriateness of a device and corresponding techniques based on medical training, clinical judgment and surgical experience. The proper surgical technique and/or procedure are the responsibility of the medical professional. Indications, contraindications, warnings, and precautions are listed in implant package insert and should be reviewed carefully by the physician and operating room personnel prior to any proposed procedure. Availability of these products might vary from a given country or region to another as a result of specific local regulatory approval or clearance requirements for sale in such country or region.

CAUTION: Federal law (USA) restricts this device to sale and use by, or on the order of a physician.



Corporate Headquarters

In2Bones Global, Inc. • Memphis, TN • USA
844. 602. 6637 • Info@i2b-USA.com

International Office

In2Bones SAS • Lyon • France
+33 (0)4 72 29 26 26

In2Bones.com

FOLLOW US....

