



FIT™ Biliary Stone Balloon

Count on FIT for Your Complex Cases

Shaffer Mok, MD, MBS*

Opinions of Dr. Shaffer Mok captured on July 1, 2019

Dr. Mok had a case where the patient had a very large 20mm hard stone near the bifurcation. The patient had a variable size duct because of this large stone. He commented that typically he would try to break the stone with a laser or with a wire stone basket. Both options can be challenging to do since it takes more time and is more expensive.

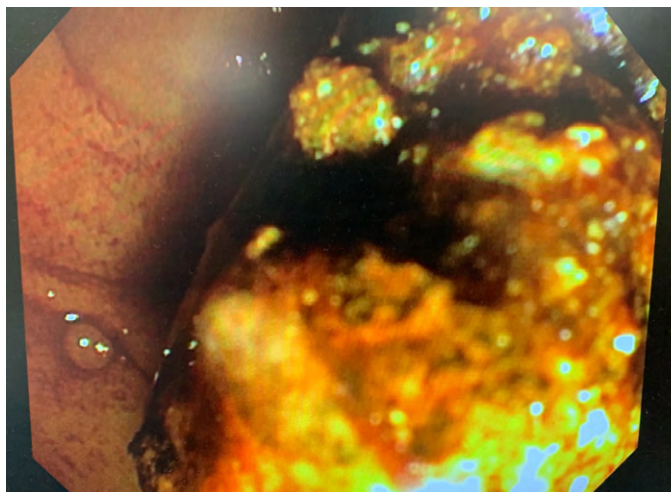
Dr. Mok performed a very large sphincterotomy with a needle knife and used a regular 18mm dilation balloon to try to dilate the duct fully.

Dr. Mok was able to advance FIT beyond the stone and pulled the massive stone out. There were residual stones and residue from the buildup leading him to do 7 to 8 passes. Due to the extreme torquing of the catheter and removal of several large stones, he chose to use a second FIT balloon to complete the case. The second balloon was inflated to its largest size and again performed well sweep after sweep.

Dr. Mok said he was pleased with the durability of the FIT balloon and stated that it was the reason he was able to complete this procedure. Without FIT's size range and durability, he would have had to use a basket or laser to break up the stone, taking more time and adding additional cost to the procedure.

While 20mm stones may not be an everyday occurrence, the FIT was a success in the eyes of Dr. Mok due to its 9-22mm size range and its durability. Size and durability alone give FIT an advantage over the competition. Coupled with injection above and below and the fact that it's not made with natural rubber latex - we can now offer our customers differentiated technology that can be used every day for basic and complex cases.

*Dr. Shaffer Mok is a paid CONMED Consultant. Licensed medical professionals should rely on their own professional judgment when determining the use of a medical device, should be trained in the use of such devices, and should review the Instructions for Use and other labeling prior to use.



Call 866.4CONMED to schedule a demonstration or visit www.CONMED.com/FIT

CONMED Corporation
525 French Road, Utica, NY 13502

Toll Free: 866-4CONMED
International: 727-214-3000

CONMED.com
CustomerExperience@conmed.com