

# ViroSafe® Filters

For use with PlumeSafe® Turbo, Porta PlumeSafe® 604, PlumeSafe® 1202 Surgical Smoke Evacuators

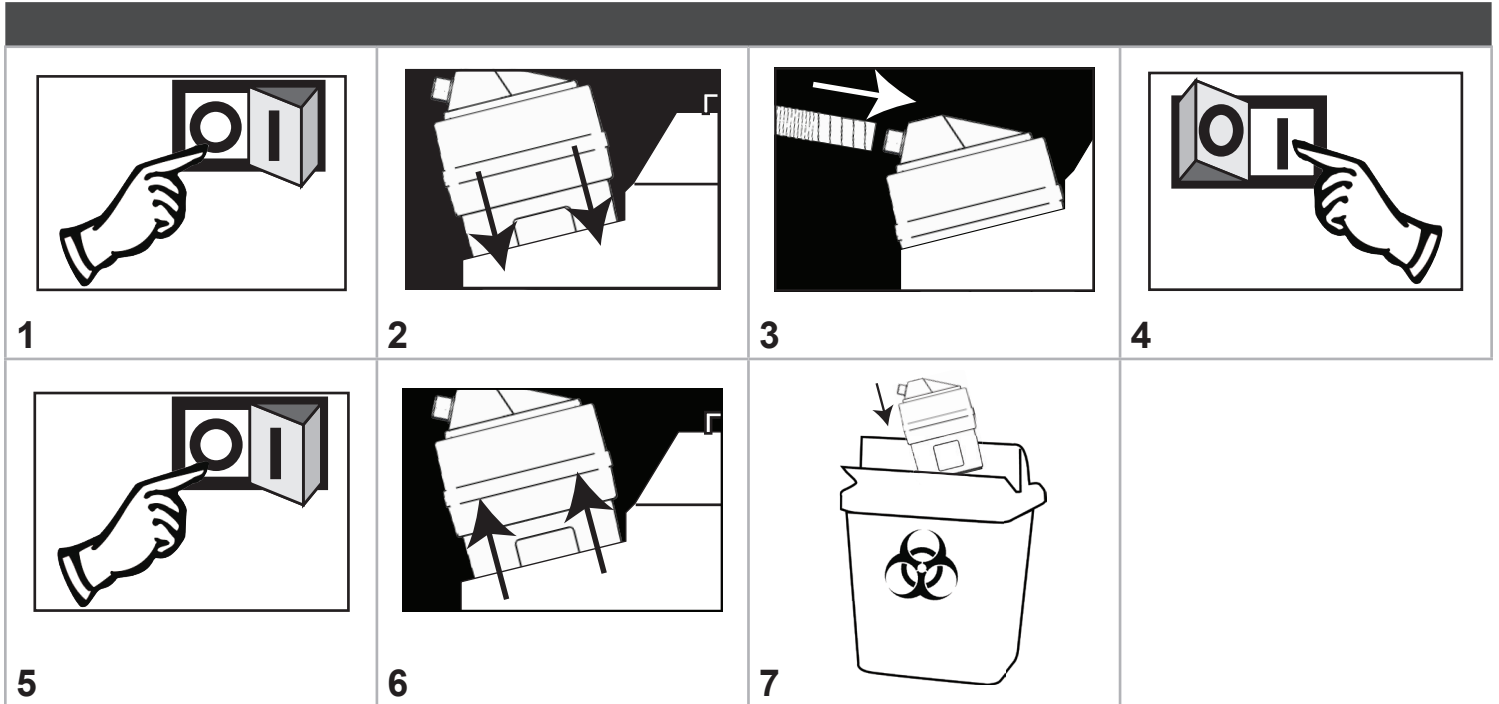
ViroSafe® 6 Filter, ViroSafe® 6 Twin Port Filter, ViroSafe® Extra Long Life Filter, ViroSafe® Extra Long Life Twin Port Filter, ViroSafe® 12, ViroSafe® Veterinary Filter, ViroSafe® Erbium YAG Filter, ViroSafe® Odor/Hair Removal Filter

**Indications for Use:** To filter smoke, aerosols, casual fluid and noxious odors produced during, but not limited to, laser and electro-surgical procedures.

Before installing or removing any filter, be sure that the system is turned off and the electrical plug has been disconnected.

If fluid is expected to be aspirated to the Filter, fluid collection devices must be installed with the vacuum hose assembly. Failure to install a fluid collection device could cause filter blockage and electrical damage.

## Instructions For Use



**Replace after:**

|  |          |
|--|----------|
| ViroSafe® 6 .....                        | 6 hours  |
| ViroSafe® 6 Twin Port .....              | 6 hours  |
| ViroSafe® Extra Long Life .....          | 18 hours |
| ViroSafe® Veterinary Filter .....        | 24 hours |
| ViroSafe® 12 .....                       | 24 hours |
| ViroSafe® Erbium YAG Filter .....        | 12 hours |
| ViroSafe® Odor/Hair Removal Filter ..... | 24 hours |

Report serious incidents involving this device to Buffalo Filter at [bf.customerfeedback@filtrationgroup.com](mailto:bf.customerfeedback@filtrationgroup.com) or to your local distributor. In addition, European customers must also report to [europe@emergogroup.com](mailto:europe@emergogroup.com) and competent authority in your member state.