

# CARDIAC OUTPUT FROM AN ENDOTRACHEAL TUBE.

## WHAT COULD BE EASIER?



# ECOM™

## ENDOTRACHEAL CARDIAC OUTPUT MONITOR

- **Continuous monitoring (versus intermittent, isolated readings):** real-time response to emergent cardiac events
- **New, patented endotracheal tube design:** monitors cardiac output without additional catheters, probes, repeated injections or other interventions
- **Displays cardiac output, stroke volume, heart rate and arterial pressure:** permits trending of hemodynamic functions
- **Standard ET tube placement:** no learning curve or changes in technique
- **No calibrations, injections, or adjustments required:** Plug and Play, manage the patient (not the device)
- **No additional risk to the patient**

# ECOM™

## ENDOTRACHEAL CARDIAC OUTPUT MONITOR

### Unique Features of the ECOM™ Cardiac Output System

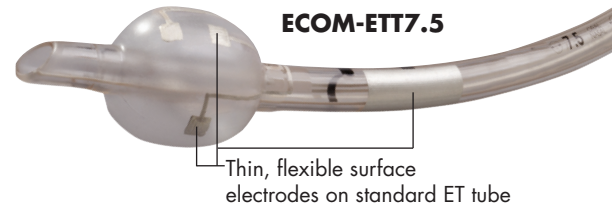
ECOM™ is a new technology platform that measures continuous stroke-to-stroke cardiac output using bioimpedance, with no risk beyond that of an ET tube and arterial line. The ECOM™ ET tube electrodes are in direct contact with the tracheal wall, just adjacent to the ascending aorta, where the site of the desired blood flow signal is optimum for measurement. In comparison, extraneous signals, such as respirations, are so small as to be readily identified and ignored. The ECOM™ electrode array and proprietary software quickly and automatically compensate for **changes in the ET tube position** and in the **patient's body position**.

#### Applications:

- Anyone with an ET tube and arterial line (both required)
- Trending of hemodynamics to aid in titration of fluids and vasoactive agents
- Patients where alarming for acute changes in cardiac output would be advantageous



**Dimensions** 4.75" x 11" x 14" (12cm x 28cm x 36cm)  
**Voltage Input** 100 to 240 VAC at 50 to 60 Hz  
**Max AC Power** 40VA consumption



**ECOM-ETT7.5**

Thin, flexible surface electrodes on standard ET tube

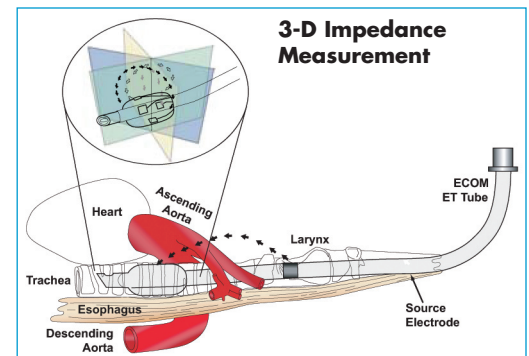


Diagram of ECOM™ system in operation

ORDERING INFORMATION	Ref. No.	Product Description	Packaging
	ECOM-M	Monitor	1
	ECOM-TC	Tube cable	1
	ECOM-BPC	Arterial pressure cable (specify manufacturers)	1
	ECOM-ETT9.0	ET tube 9.0mm	4/box
	ECOM-ETT8.5	ET tube 8.5mm	4/box
	ECOM-ETT8.0	ET tube 8.0mm	4/box
	ECOM-ETT7.5	ET tube 7.5mm	4/box
	ECOM-ETT7.0	ET tube 7.0mm	4/box
	ECOM-ETT6.5	ET tube 6.5mm	4/box
	Call Customer Service	Power cord (country specific)	1

Covered by one or more of the following U.S. patents and their international equivalents: 5782774, 5791349, 6095987 and 6292689 with other patents pending.

#### CONMED CORPORATION PRODUCT AREAS:

ARTHROSCOPY • ELECTROSURGERY • ENDOSCOPY • ENDOSURGERY • GASTROENTEROLOGY • INTEGRATED SYSTEMS • PATIENT CARE • POWERED INSTRUMENTS • PULMONOLOGY



525 French Road  
 Utica, NY 13502  
 (315) 797-8375  
 Customer Service: 1-800-448-6506  
 FAX: 1-800-438-3051  
 International Sales: +1(315) 797-8375 • FAX: +1(315) 735-6235  
 email: info@mail.conmed.com  
 www.conmed.com

