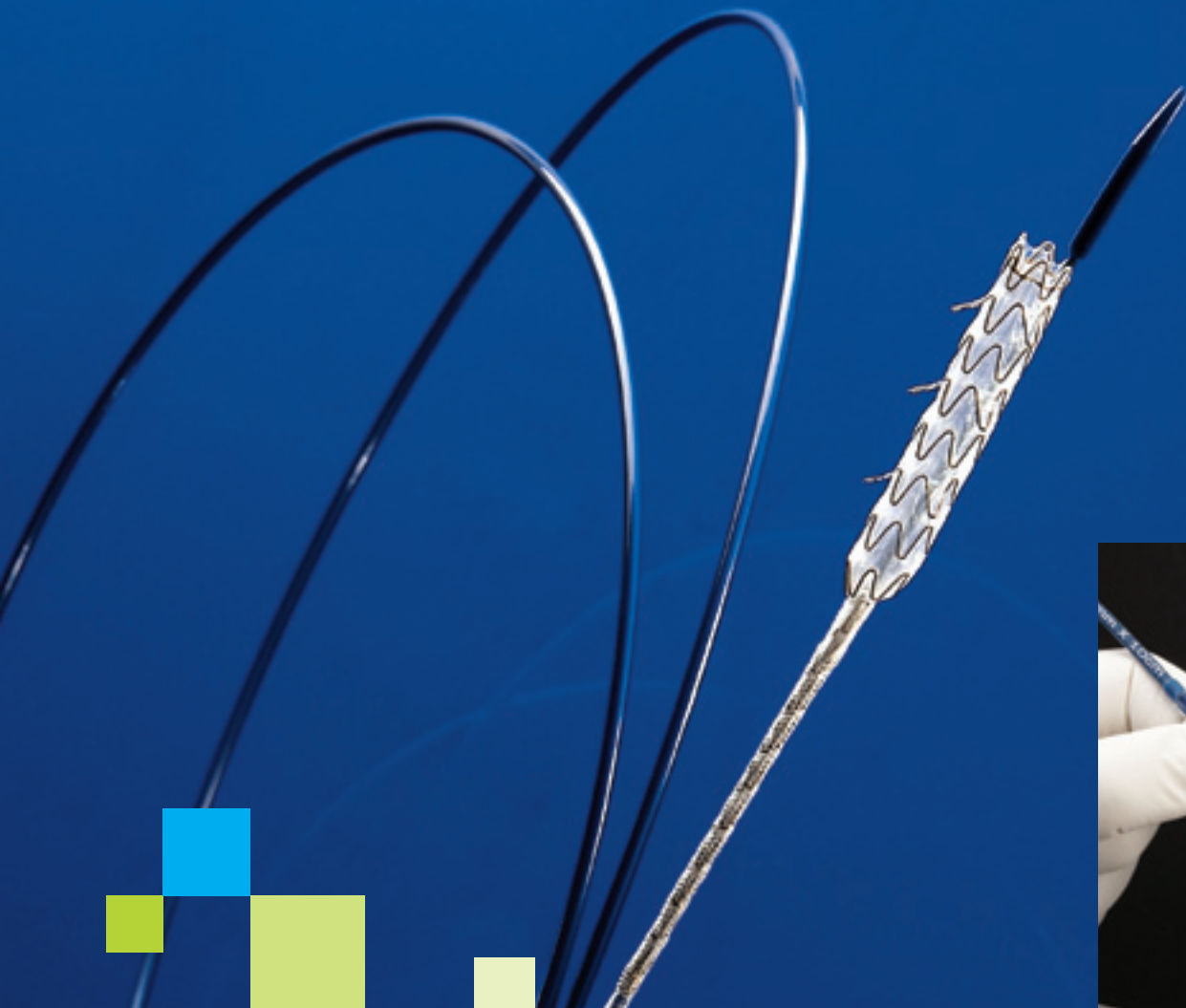




The GORE VIABIL[®] Biliary Endoprosthesis

with Exclusive Pull-Line Deployment



A revolutionary biliary stent. A delivery technology like no other.

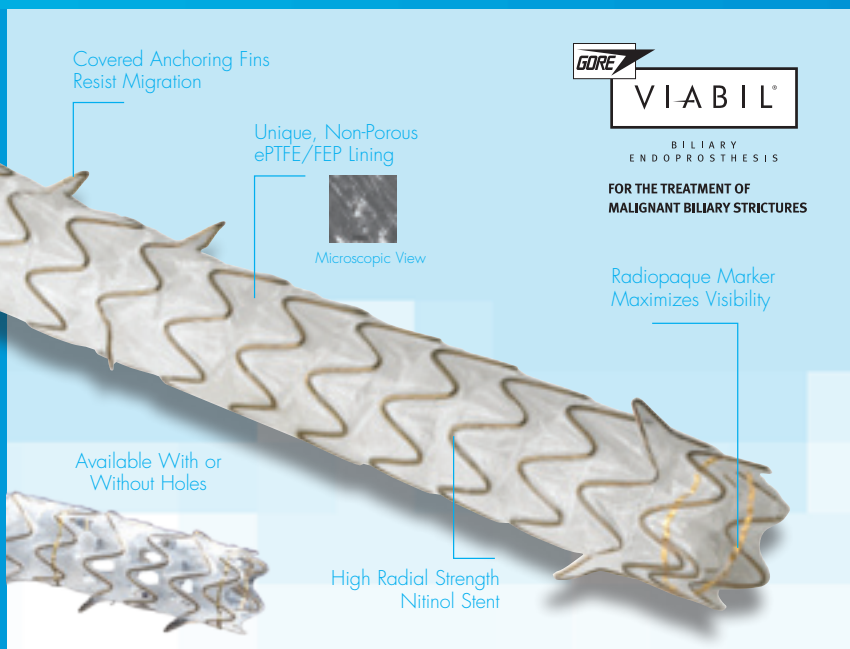
GORE
VIABIL[®]
BILIARY
ENDOPROSTHESIS
FOR THE TREATMENT OF
MALIGNANT BILIARY STRICTURES

Applied Ingenuity™

CONMED™
ENDOSCOPIC TECHNOLOGIES

A revolutionary biliary stent.

Crafted of proprietary design and material, the GORE VIABIL® Biliary Endoprosthesis has revolutionized the palliation of symptoms caused by malignant biliary obstruction. Designed using advanced technology that has set the performance standard for covered metal stents, the GORE VIABIL® Biliary Endoprosthesis has brought proven clinical benefits to the patients that endoscopists serve.



Clinical performance.

- **510(k) clinical results ePTFE/FEP liner**
 - 61 patients/6-month follow-up
 - Re-occlusion rate of 9.8%
 - Successful revisions – 6 of 6 (2 stents/4 drains)
 - Primary patency – 87%
 - No reports of tissue in-growth
- **Biliary drainage in malignant strictures using ePTFE covered stent (Viabil), personal results: Marzio, A., et al, ESGAR 2005**
 - 26 patients
 - 96% had adequate palliative drainage during life
 - Primary patency (3, 6, 12 mos.) – 100%, 100%, 85%*
 - No complications, no migrations

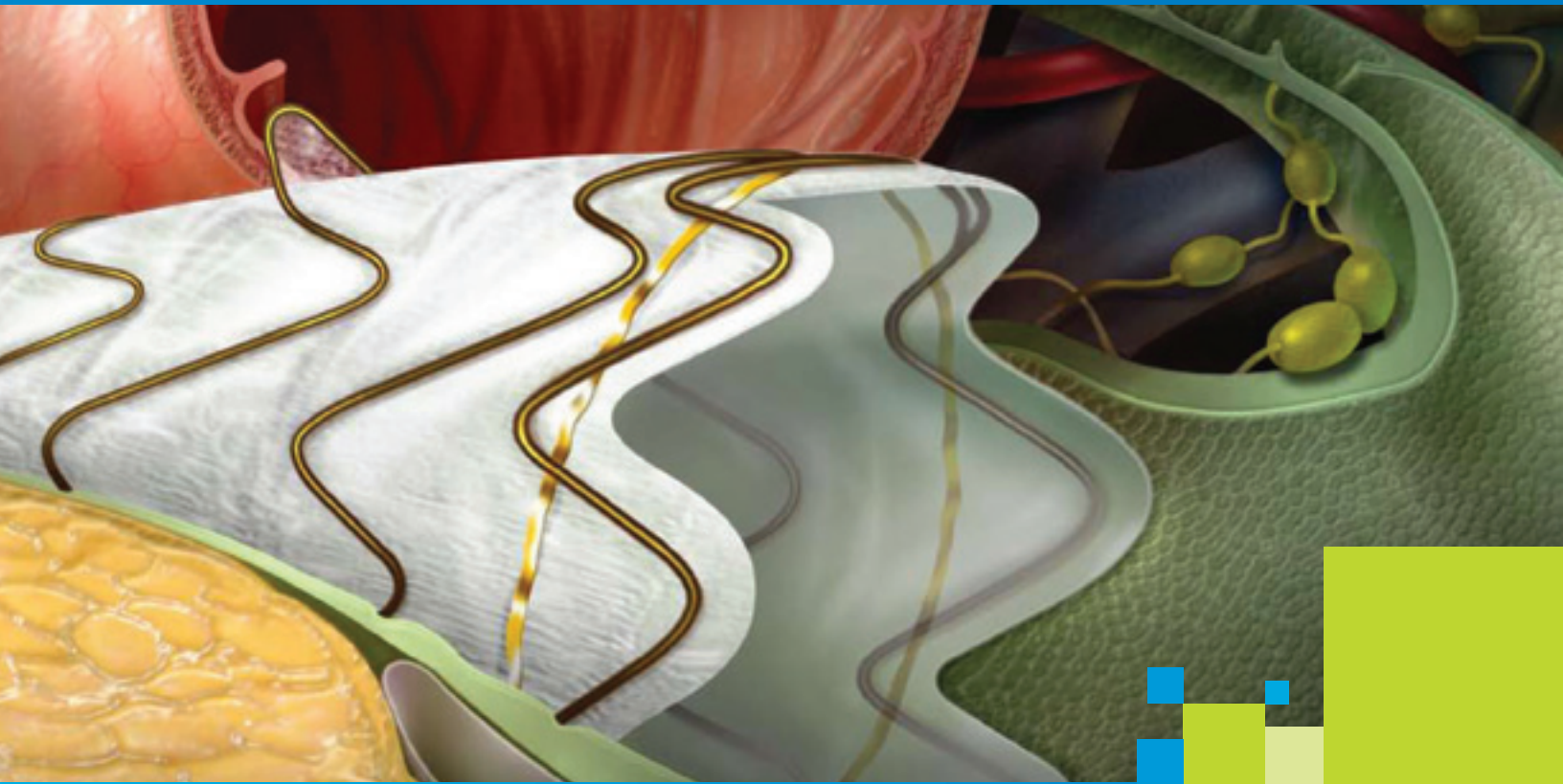
* 1 device re-occlusion, 5 patients lost to follow-up ** Data on file

† Expanded polytetrafluoroethylene †† Fluorinated ethylene propylene

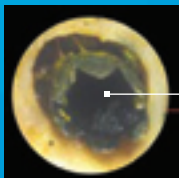
A biliary endoprosthesis unlike any other.

- **Unique non-porous ePTFE†/FEP liner††**
 - Resists bacteria colonization and bile occlusion
 - Prevents tissue attachment and tumor ingrowth
 - Facilitates longer and higher patency rates**
- **Completely lined, end-to-end**
 - Minimal metal interaction with bile duct or gastric juices
 - Minimal potential for tumor ingrowth or epithelialization near the ends
- **Soft, terminated wire ends**
 - No mid-mucosal penetration of wires
- **Flexible, covered anchoring fins**
 - Assures minimal stent migration**
 - Prevents tissue encapsulation
- **Branch drainage side wall holes and no-holes configurations**
 - Allows 2cm of device placement over side branch
- **Geometric Nitinol construction**
 - Flexible and conformable
 - Provides high radial strength
- **Adjustable device length**
 - Selective shortening without fore-shortening

A smooth, precision-controlled deployment platform



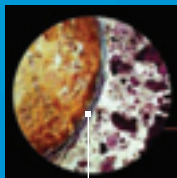
The lumen of the GORE VIABIL® Biliary Endoprosthesis is patent, and no tissue has penetrated the impermeable inner layer of ePTFE/FEP.



Patent Lumen



Minimal bile precipitate is attached to the internal wall of the endoprosthesis.



Neoplastic tissue is present on the outer surface of the endoprosthesis. The neoplastic tissue does not penetrate the ePTFE/FEP.

Gross (left) histological cross-sections of a GORE VIABIL® Biliary Endoprosthesis retrieved 459 days postoperatively from a patient who died from tumor progression.



A delivery technology like no other. Just twist and pull.

It's no secret that placing a biliary endoprosthesis where you need it can be a challenge—and precision placement is critical to patient outcome. The GORE VIABIL® Biliary Endoprosthesis features a groundbreaking delivery platform unlike any other in the endoscopic community. With a simple pull-to-deploy mechanism, placement and release are effortless, controlled and precise.



Nothing short of a special delivery.

- **Ultra-thin, tubular filament pull-line**
 - Unfurls the stent as the interlocking braid is pulled
- **Proprietary, curved tip**
 - Navigates challenging biliary anatomy and transitions for smoother catheter advancement and placement
- **Ergonomic hub**
 - Simple twist to unlock and deploy
- **Accurate positioning**
 - Promotes a seamless, coordinated deployment process between physician and assistant
- **Gradual, controlled deployment**
 - Intentional, incremental release of the biliary endoprosthesis
 - Offers an easy to use alternative to traditional push/pull deployment systems.

Turn the hub to unlock the deployment system



Pull steadily to deploy the prosthesis



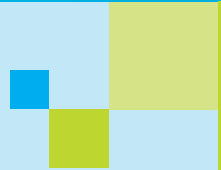
For more information about the GORE VIABIL® Biliary Endoprosthesis, contact your ConMed representative or visit www.conmed.com



Applied Ingenuity. The GORE VIABIL® Biliary Endoprosthesis.

At ConMed, we don't play follow the leader. We identify endoscopic challenges, and develop innovative products by thinking outside the box. The GORE VIABIL® Biliary Endoprosthesis and its unique delivery system synthesize our commitment to innovation and our long-term experience in endoscopy. With a proprietary product unlike any other, ConMed helps redefine endoscopy.





GORE VIABIL® Biliary Endoprosthesis Ordering Information

Catalog Number	Stent Diameter and Length	Catheter Length	O.D.	Unit
<i>Holes</i>				
VH0806200	8mm x 60mm	200 cm	8.5F	1/Box
VH0808200	8mm x 80mm	200 cm	8.5F	1/Box
VH0810200	8mm x 100mm	200 cm	8.5F	1/Box
VH1006200	10mm x 60mm	200 cm	8.5F	1/Box
VH1008200	10mm x 80mm	200 cm	8.5F	1/Box
VH1010200	10mm x 100mm	200 cm	8.5F	1/Box
<i>No Holes</i>				
VN0804200	8mm x 40mm	200 cm	8.5F	1/Box
VN0806200	8mm x 60mm	200 cm	8.5F	1/Box
VN0808200	8mm x 80mm	200 cm	8.5F	1/Box
VN0810200	8mm x 100mm	200 cm	8.5F	1/Box
VN1004200	10mm x 40mm	200 cm	8.5F	1/Box
VN1006200	10mm x 60mm	200 cm	8.5F	1/Box
VN1008200	10mm x 80mm	200 cm	8.5F	1/Box
VN1010200	10mm x 100mm	200 cm	8.5F	1/Box

GORE, VIABIL® Biliary Endoprosthesis is contraindicated for: ALL CARDIOVASCULAR APPLICATIONS.

CONMED CORPORATION PRODUCT AREAS:

ARTHROSCOPY • ELECTROSURGERY • ENDOSCOPY • ENDOSURGERY • GASTROENTEROLOGY • INTEGRATED SYSTEMS • PATIENT CARE • POWERED INSTRUMENTS • PULMONOLOGY



525 French Road
 Utica, NY 13502
 (315) 797-8375
 Customer Service: 1-800-448-6506
 FAX: 1-800-438-3051
 International Sales: +1(315) 797-8375 • FAX: +1(315) 735-6235
 email: info@mail.conmed.com
 www.conmed.com