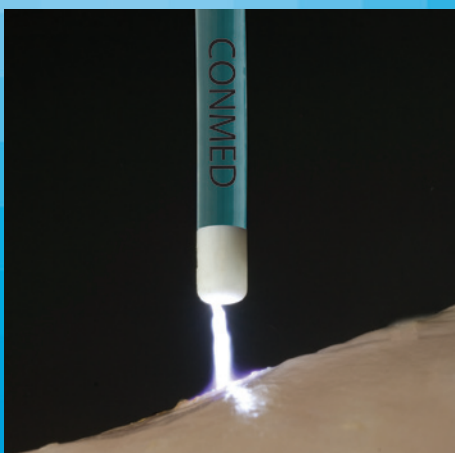
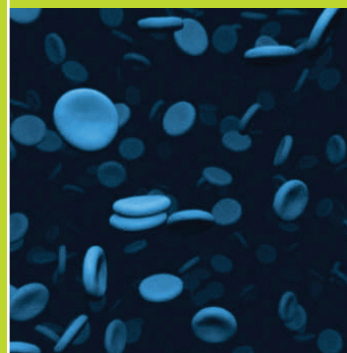


  
**BEAMER\***  
ARGON PROBE



First in  
Argon Beam  
Coagulation



When Reach and Accuracy Count

Applied Ingenuity™

 **CONMED™**  
ENDOSCOPIC TECHNOLOGIES



# BEAMER\*

## ARGON PROBE



Proprietary  
Ceramic Tip



Long and  
Controlled Beam

### CERAMIC TIP

- Guides argon beam flow for targeted therapy
- Offers visual contrast of probe against mucosa

### LONG BEAM

- Argon beam can be initiated without contacting the mucosa

### VERSATILE THERAPY

- Probe beam length, width, and effect can be adjusted by changing wattage, argon flow rate and current mode on Beamer System to offer a variety of options for the desired procedure

## Beamer Argon Probe

*Sterile, Disposable*

Latex **FREE**

Catalog Number	Description	Unit
A-Beam-1	Beamer Probe 1.8MM X 160CM (Bronchoscope)	10/case
A-Beam-2	Beamer Probe 1.8MM X 320CM (Enteroscope)	10/case
A-Beam-3	Beamer Probe 2.3MM X 230CM (Gastroscope/Colonoscope/Duodenoscope)	10/case
A-Beam-4	Beamer Probe 2.3MM X 320CM (Enteroscope)	10/case
A-Beam-5	Beamer Probe 3.2MM X 230CM (Gastroscope/Colonoscope/Duodenoscope)	10/case

#### CONMED CORPORATION PRODUCT AREAS:

ARTHROSCOPY • ELECTROSURGERY • ENDOSCOPY • ENDOSURGERY • GASTROENTEROLOGY • INTEGRATED SYSTEMS • PATIENT CARE • POWERED INSTRUMENTS • PULMONOLOGY



525 French Road  
Utica, NY 13502  
(315) 797-8375  
Customer Service: 1-800-448-6506  
FAX: 1-800-438-3051  
International Sales: +1(315) 797-8375 • FAX: +1(315) 735-6235  
email: info@mail.conmed.com  
www.conmed.com