

XWire™ Next Generation Guidewire

EXPLOR E EXCHANGE EXCEL
EXAMINE

Expand the Boundaries

Applied Ingenuity™

CONMED™
ENDOSCOPIC TECHNOLOGIES

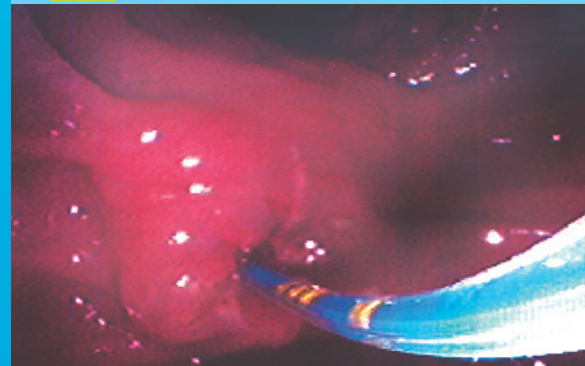
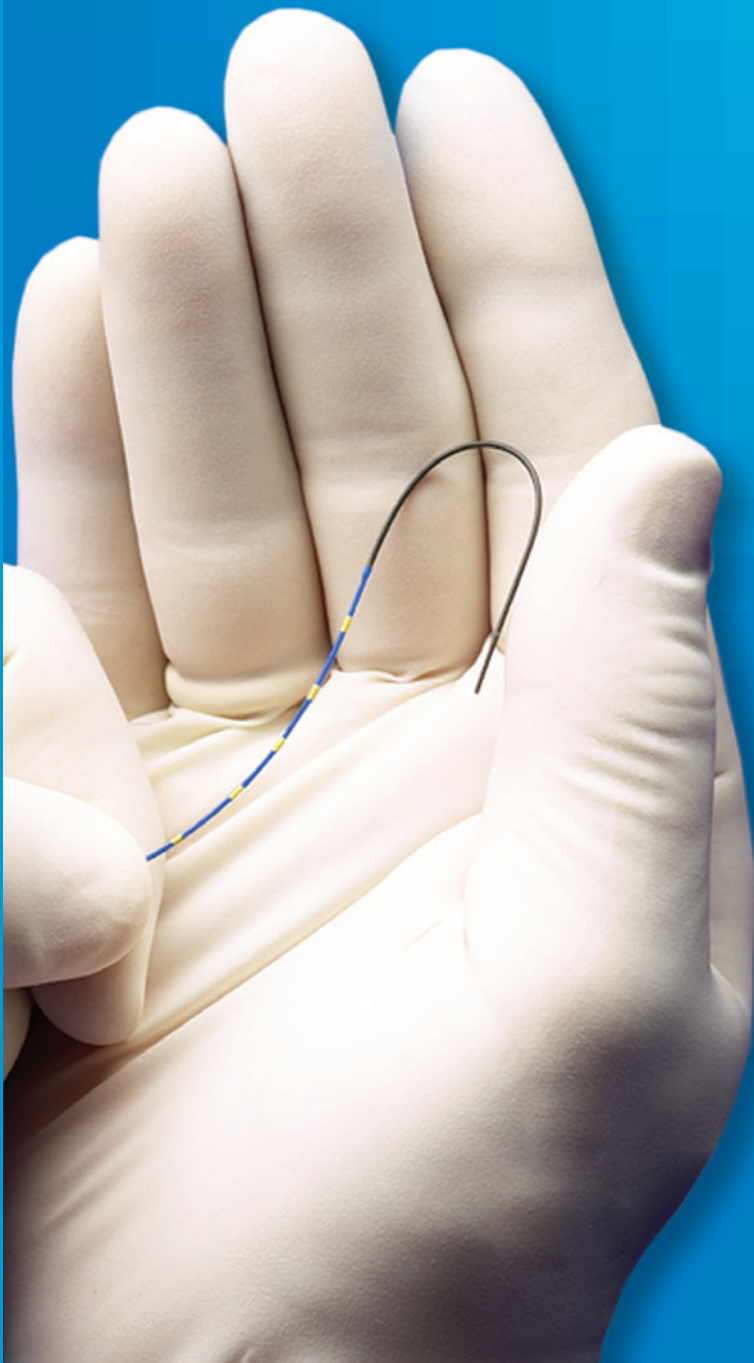
Explore

■ Tapered Distal 20cm

- Provides optimum flexibility for effective transition across the elevator of the duodenoscope

■ Hydrophilically Coated Floppy Distal Tip

- Lubricious coating enhances cannulation and stricture access capability



- The XWire™ is easily seen and provides excellent detection of movement while the three marker bands signal that approximately 15 centimeters of the wire are in the duct.

Examine

■ Radiopaque Floppy Tip

- Provides optimal fluoroscopic visibility
- 5cm length enables fluoroscopic stricture measurement



- An example of the XWire™ maintaining access to the common bile duct. The three marker bands signal that approximately 15 centimeters of the wire are in the duct.

Exchange

■ Proprietary REGILANT™ Nitinol Core Composition

- Optimized flexibility over distal 20 cm
- Kink resistant, for maneuvering through torturous angles
- Enhanced stiffness over entire exchange segment

■ PTFE Jacket

- Lubricous coating over wire jacket ensures smooth device transition
- Meets IEC 60601 standard for cutting over the guidewire

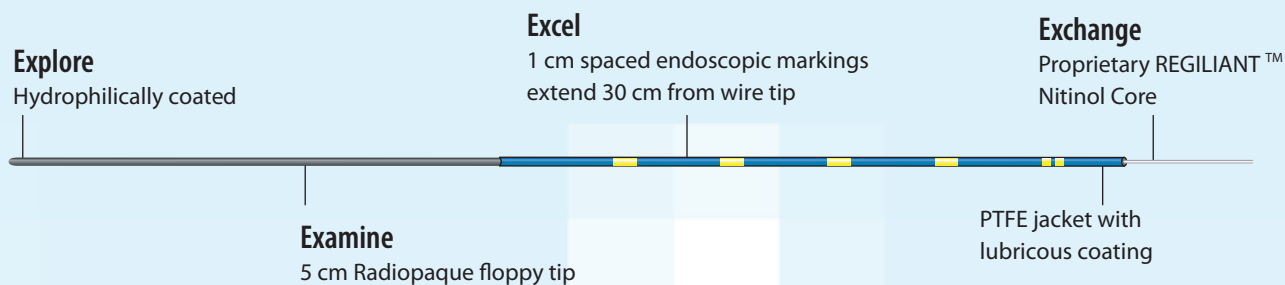
Excel

■ Simple Yet Functional Endoscopic Measurement System

- 1 cm spaced visual markings, extend 30 cm from wire tip
- Helps detect inadvertent wire movement
- Ideal color combination for easy visualization
- Multiple markings every 5 cm provide a simple, easy to decipher, endoscopic stricture measurement system



XWire™ Features



Ordering Information

Item Number	Wire Type	Guidewire O.D. inches	Length millimeters	Tip cm	Torque Type	Vise	Unit
035450S	Standard wire	.035"	.89mm	450cm	Straight tip	No	3/box
035450A	Standard wire	.035"	.89mm	450cm	Torqueable angled tip	Yes	3/box
035260S	Standard wire	.035"	.89mm	260cm	Straight tip	No	3/box
035260A	Standard wire	.035"	.89mm	260cm	Torqueable angled tip	Yes	3/box
035450SS	Stiff wire	.035"	.89mm	450cm	Straight tip	No	3/box
035450AS	Stiff wire	.035"	.89mm	450cm	Torqueable angled tip	Yes	3/box
035260SS	Stiff wire	.035"	.89mm	260cm	Straight tip	No	3/box
035260AS	Stiff wire	.035"	.89mm	260cm	Torqueable angled tip	Yes	3/box
025450S	Standard wire	.025"	.64mm	450cm	Straight tip	No	3/box
025450A	Standard wire	.025"	.64mm	450cm	Torqueable angled tip	Yes	3/box
025260S	Standard wire	.025"	.64mm	260cm	Straight tip	No	3/box

CONMED CORPORATION PRODUCT AREAS:

ARTHROSCOPY • ELECTROSURGERY • ENDOSCOPY • ENDOSURGERY • GASTROENTEROLOGY • INTEGRATED SYSTEMS • PATIENT CARE • POWERED INSTRUMENTS • PULMONOLOGY



525 French Road
 Utica, NY 13502
 (315) 797-8375
 Customer Service: 1-800-448-6506
 FAX: 1-800-438-3051
 International Sales: +1(315) 797-8375 • FAX: +1(315) 735-6235
 email: info@mail.conmed.com
 www.conmed.com