

# ENDOSCOPIC SYSTEMS

## Product Catalog



|   |        |
|---|--------|
| Global Customer Service.....                                | 2      |
| Product Support .....                                       | 3      |
| Return/Repair Information.....                              | 4      |
| Digital Camera Systems .....                                | 6      |
| EnVision™ Autoclavable Small Joint Arthroscopes.....        | 7      |
| EnVision Autoclavable Arthroscopes and Sheath Systems ..... | 8–10   |
| EnVision Sheaths and Laparoscopes .....                     | 11     |
| Operative Laparoscopes and Hysteroscopes .....              | 12     |
| Digital Documentation .....                                 | 13, 14 |
| Xenon Light Sources and Light Guides .....                  | 15     |
| Advanced Insufflation Systems .....                         | 16, 17 |
| Medical Monitors .....                                      | 18     |
| Video Printer and Recorder.....                             | 19     |
| Surgical Video Carts and Accessories .....                  | 20– 25 |
| Soaking and Storage Trays .....                             | 26, 27 |
| Video Accessories .....                                     | 28     |
| Sensatec® Dissecting Forceps .....                          | 29     |
| Sensatec Tissue Grasping Forceps .....                      | 30, 31 |
| Sensatec Scissors .....                                     | 32     |
| Hasson Graspers and Open Laparoscopy.....                   | 33     |
| Bi-Tec® .....   | 34     |
| Trocars.....  | 35     |
| Suture Punch .....  | 36     |
| Accessories .....   | 37     |
| Numerical Index .....                                       | 39– 44 |
| Alphabetical Index .....                                    | 45– 50 |

**All products C.E. Marked unless noted.**

## To Place Your Order

**Please Contact Your Local Sales Representative  
or Sales Office.**

**To identify your local Sales Representative or Sales  
Office please contact ConMed Linvatec Customer  
Service, Largo, Florida**

Phone: 727-392-6464

Fax: 727-397-4540

E-mail: [custserv1@linvatec.com](mailto:custserv1@linvatec.com)

### **ConMed Linvatec**

Attn: Customer Service

11311 Concept Boulevard

Largo, FL 33773-4908 USA

At ConMed Linvatec, we want to offer more than a quality product. We take pride in being able to provide you with value added services to support our products. The information given in this catalog is designed to address your questions regarding product support.

## Customer Support

If you encounter a problem or need technical assistance, contact Corporate Customer Service (Product Support) or your Sales Representative. Refer to the Customer Service telephone numbers listed on the opposite page.

## Regulatory Compliance

Report any injuries or malfunctions to ConMed Linvatec Customer Service. Refer to the Customer Service telephone numbers listed.

## Original Warranty

ConMed Linvatec (the "Company") warrants to the first purchaser or lessee ("You" or "Customer") that the instruments, attachments and parts manufactured by or for the Company (hereinafter collectively "Instruments") have been tested, inspected, and shipped in proper working order.

The Company warrants all new instruments to be free from defects in materials and workmanship for the following periods, measured from date of sale:

### Original Warranties

|   |              |
|---|--------------|
| MPower™ Handpieces.....                       | 24 Months    |
| Powered Surgical Instruments.....             | 12 Months    |
| Power Attachments.....                        | 12 Months    |
| All Single Use Products.....                  | Upon Receipt |
| Handpiece Cords and Power Cords .....         | 6 Months     |
| Pneumatic hoses.....                          | 6 Months     |
| Bur guards, blade guards, attachments.....    | 6 Months     |
| Battery Packs.....                            | 3 Months     |
| Battery Chargers.....                         | 12 Months    |
| Camera Consoles.....                          | 12 Months    |
| Video Components.....                         | 12 Months    |
| Video Cables and Light Guides.....            | 3 Months     |
| Scopes .....                                  | 12 Months    |
| Camera Heads .....                            | 12 months    |
| Shutt® Instruments.....                       | 12 Months    |
| Footswitches .....                            | 12 Months    |
| Irrigation Systems (pumps and remotes).....   | 12 Months    |
| Reusable Procedure Specific Instruments ..... | 12 Months    |

Following the Original Warranty, ConMed Linvatec offers additional warranty and service programs that support our products throughout their lifetime. Service programs address the necessity to control cost and greatly reduce repair turnaround time by eliminating the need for repair quotes. Products not covered under a service program are subject to variable repair charges that typically result in significantly higher repair costs. To find out which service option best meets your needs, contact your local Sales Representative.

## Service Agreements

Service Agreements provide additional warranty coverage on capital equipment. Contact your local sales representative for additional information.

## Procedure for Returns/Repairs

1. All Instruments must be cleaned and sterilized, if appropriate, prior to return of any Instrument to a ConMed Linvatec repair facility.
2. An authorized Returned Goods (RG) Number must be obtained prior to returning any Instrument for return/repair.
3. To return a product for repair, contact ConMed Linvatec, your local repair facility, or your sales representative. The following information is needed to process a repair/return:
  - Catalog Number
  - Serial/Lot Number
  - Original Invoice Number
  - Detailed description of the problem or reason for return
  - An RG Number
4. ConMed Linvatec maintains various repair centers around the world. When you are issued your RG number, you will be advised of the location where to send your product.





**IM4000**



**IM4120**



**IM3300**



**IM3330**



**IM3334**

## HD Camera System

- 720p, 1080i, 1080p selectable
- Upgradeable FPGA platform
- True autoclavability
- Eye piece, Cartridge, Urology heads available

Cat. No.

|   |        |
|---|--------|
| High Definition Camera Controller .....           | IM4000 |
| High Definition 3CCD Camera Head – Eyecup.....    | IM4120 |
| High Definition 3CCD Camera Head - Cartridge..... | IM4121 |
| High Definition 3CCD Camera Head – Urology .....  | IM4123 |

## Digital 3CCD Camera System

ConMed Linvatec's IM3300 offers enhanced definition with the convenience of autoclavability. Multiple digital outputs and 4 customizable presets make the IM3300 a great choice for any installation and any specialty. Features include an ergonomically designed camera head for improved comfort, ShockFlex prism mounting, electronic zoom, and progressive scan technology for high definition image quality.

|  |        |
|--|--------|
| 3CCD Enhanced Definition Camera Controller, NTSC ..... | IM3300 |
| 3CCD Enhanced Definition Camera Controller, PAL .....  | IM3301 |

|  |        |
|--|--------|
| Autoclavable 3CCD Enhanced Definition Eyecup Camera Head, NTSC.....    | IM3330 |
| Autoclavable 3CCD Enhanced Definition Cartridge Camera Head, NTSC..... | IM3332 |

|  |        |
|--|--------|
| Autoclavable 3CCD Enhanced Definition Urology Camera Head, NTSC.....   | IM3334 |
| Autoclavable 3CCD Enhanced Definition Eyecup Camera Head, PAL.....     | IM3331 |
| Autoclavable 3CCD Enhanced Definition Cartridge Camera Head, PAL ..... | IM3333 |
| Autoclavable 3CCD Enhanced Definition Urology Camera Head, PAL .....   | IM3335 |

## Optical Couplers

|  |          |
|--|----------|
| 35mm "V" mount Coupler-Eyecup .....    | 500035VE |
| 35mm "V" mount Coupler-Cartridge ..... | 500035VC |
| 35mm "C" mount Coupler-Eyecup .....    | 500035CE |
| 35mm "C" mount Coupler-Cartridge ..... | 500035CC |
| 25mm "C" mount Coupler-Eyecup .....    | 500025CE |
| 25mm "C" mount Coupler-Cartridge ..... | 500025CC |

EnVision Autoclavable Endoscopes offer excellent optical performance with state-of-the-art optical systems. Sapphire lenses ensure durability, decreasing costly repairs.

## Small Joint Scopes And Sheath Systems

### 1.9mm Autoclavable Scopes

*Working Length 60mm*

|                | Eyecup      | Cartridge |
|----------------|-------------|-----------|
| 1.9mm 0°.....  | T1900 ..... | T1901     |
| 1.9mm 30°..... | T1930 ..... | T1931     |

### Sheath System for 1.9mm Scopes

|                         |       |
|-------------------------|-------|
| 2.8mm Sheath.....       | C3101 |
| Blunt Obturator.....    | C3102 |
| Conical Obturator ..... | C3103 |
| Sharp Trocar.....       | C3104 |

### 2.5mm Autoclavable Scopes

*Working Length 72mm*

|                |             |       |
|----------------|-------------|-------|
| 2.5mm 0°.....  | T2500 ..... | T2501 |
| 2.5mm 30°..... | T2530 ..... | T2531 |
| 2.5mm 70°..... | T2570 ..... | T2571 |

### Sheath System for 2.5mm Scopes

|                                |          |
|--------------------------------|----------|
| 3.5mm Sheath.....              | C3252    |
| 3.5mm Sheath with 30° tip..... | C3252-30 |
| Blunt Obturator.....           | C3253    |
| Conical Obturator .....        | C3254    |
| Sharp Trocar.....              | C3255    |



# EnVision™ Autoclavable Arthroscopes and Sheath Systems



T2930



T4932

## QuickLatch® Autoclavable 2.9mm Scopes

ConMed Linvatec's latest innovation is a 2.9mm scope which offers superior optical performance in a smaller package than standard 4mm scopes. Features include:

- 2.9mm outside diameter
- Working length 152mm
- 100° field of view
- 0°, 30°, 45°, 70° Angle of view
- Equivalent light transmission and image size to 4mm scopes
- Increased depth of field and less distortion compared to competitive 4mm scopes
- Increased durability with new proprietary sheath system

|                 | Eyecup      | Cartridge |
|-----------------|-------------|-----------|
| 2.9mm 0° .....  | T2900 ..... | T2901     |
| 2.9mm 30° ..... | T2930 ..... | T2931     |
| 2.9mm 45° ..... | T2944 ..... | T2945     |
| 2.9mm 70° ..... | T2970 ..... | T2971     |

## QuickLatch Sheath System for 2.9mm Scope

Proprietary scope-sheath interface offers better scope protection and increased flow

- Smaller outside diameter allows for better maneuverability
- Scope-sheath interface ensures excellent tip protection
- Ease of use increases efficiency

|  | Cat. No. |
|--|----------|
| 4.0mm Small Joint Single Stopcock Sheath .....             | T4031    |
| 4.0mm Small Joint Double Stopcock Sheath .....             | T4032    |
| 4.7mm Arthroscopy Single Stopcock Sheath .....             | T4731    |
| 4.7mm Arthroscopy Double Stopcock Sheath .....             | T4732    |
| 5.2mm High Flow Single Stopcock Sheath .....               | T4931    |
| 5.2mm High Flow Double Stopcock Sheath .....               | T4932    |
| 5.2mm Pressure Sensing Single Stopcock Sheath System ..... | T5131    |
| 5.2mm Pressure Sensing Double Stopcock Sheath System ..... | T5132    |
| Blunt Obturator .....                                      | T4901    |
| Conical Obturator .....                                    | T4902    |
| Sharp Trocar .....   | T4903    |
| Sheath Body O-Ring (replacement), Qty. 2 .....             | T4904    |
| Stopcock O-Ring (replacement), Qty. 4 .....                | T4908    |
| 11" Switching Stick .....                                  | T4906-11 |
| 14" Switching Stick .....                                  | T4906    |
| Arthroscopic Portal Rod .....                              | T4907    |
| Stopcock Locking Nut .....                                 | T4905    |
| Single Stopcock Bridge .....                               | T4911    |
| Double Stopcock Bridge .....                               | T4912    |
| Stopcock Lock .....  | T4914    |
| Pressure Sensing Bridge Adapter .....                      | T4910    |
| Pressure Sensing Single Stopcock Assembly .....            | T5101    |
| Pressure Sensing Double Stopcock Assembly .....            | T5102    |
| Pressure Sensing Outer Tip Assembly .....                  | T5103    |
| Pressure Sensing Stopcock O-ring .....                     | T5104    |
| Pressure Sensing Outer Tip Assembly O-ring .....           | T5105    |
| Arthroscopy Sheath Body (replacement) .....                | T4730    |
| Arthroscopy High Flow Sheath Body (replacement) .....      | T4930    |
| Pressure Sensing Sheath Body .....                         | T5130    |

## QuickLatch® Autoclavable 4mm Scopes

ConMed Linvatec's 4mm QuickLatch scopes feature state of the art optics with an innovative scope/sheath interface.

- Working length 170mm

|               | Eyecup       | Cartridge |
|---------------|--------------|-----------|
| 4mm 0° .....  | QL4000 ..... | QL4001    |
| 4mm 30° ..... | QL4300 ..... | QL4301    |
| 4mm 70° ..... | QL4700 ..... | QL4701    |

## QuickLatch Sheath System for 4mm Scope

Proprietary scope-sheath interfaces offer ease of use with better scope protection and increased flow efficiency.

- 5.5mm and 5.9mm Outside diameter sheaths
- Scope sheath interface increases durability and provides excellent tip protection of scope

|                                   | Cat. No. |
|-----------------------------------|----------|
| 5.5mm Arthroscopy Sheath Kit      |          |
| Single Stopcock.....              | QL5531   |
| Double Stopcock.....              | QL5532   |
| 5.9mm High Flow Sheath Kit        |          |
| Single Stopcock.....              | QL6131   |
| Double Stopcock.....              | QL6132   |
| 5.9mm Pressure Sensing Sheath Kit |          |
| Single Stopcock.....              | QL6231   |
| Double Stopcock.....              | QL6232   |
| Switching Sticks                  |          |
| 11" Switching Stick.....          | T4906-11 |
| 14" Switching Stick .....         | T4906    |
| Arthroscopic Portal Rod.....      | T4907    |
| QuickLatch Stopcock Lock.....     | T4914    |

## QuickLatch Bridge Systems for 4mm Scope

|   |          |
|---|----------|
| Single Stopcock Bridge.....                                       | QL6111   |
| Double Stopcock Bridge.....                                       | QL6112   |
| Pressure Sensing Bridge Adapter.....                              | QL6210   |
| Pressure Sensing Bridge Adapter for Extended Length Cannulas..... | QL6210XL |

## Replacement Parts

|  |        |
|--|--------|
| Blunt Obturator .....  | QL6101 |
| Conical Obturator.....   | QL6102 |
| Sharp Trocar .....   | QL6103 |
| Cannulated Obturator .....   | QL6104 |
| (compatible with ConMed Linvatec's 2220, T4906, and T4906-11 Switching Sticks) |        |
| Sheath Body O-ring (Replacement), Qty. 2 .....                                 | T4904  |
| Stopcock O-ring (Replacement), Qty. 4.....                                     | T4908  |
| Stopcock Locking Nut.....  | T4905  |
| Single Stopcock Assembly.....  | T5801  |
| Double Stopcock Assembly.....  | T5802  |
| Pressure Sensing Single Stopcock Assembly.....                                 | T5101  |
| Pressure Sensing Double Stopcock Assembly.....                                 | T5102  |
| Pressure Sensing Outer Tip Assembly.....                                       | QL6201 |
| Pressure Sensing Stopcock O-ring (replacement).....                            | T5104  |
| Pressure Sensing O-ring, Outer Tip Assembly, Qty. 2 .....                      | QL6205 |
| Pressure Sensing 5.9mm Sheath Body.....  | QL6230 |



**QL4300**

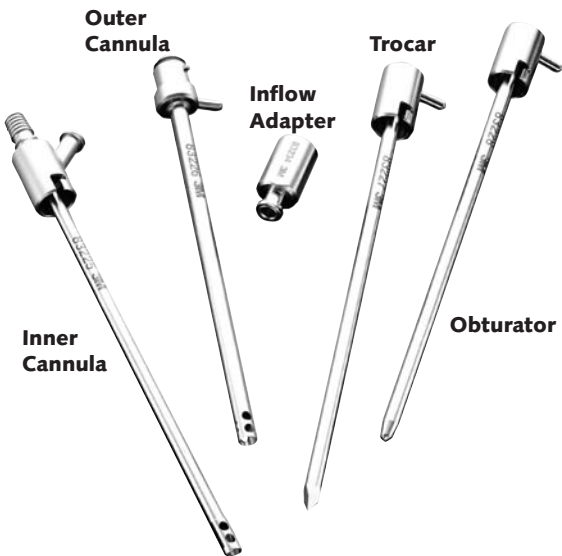
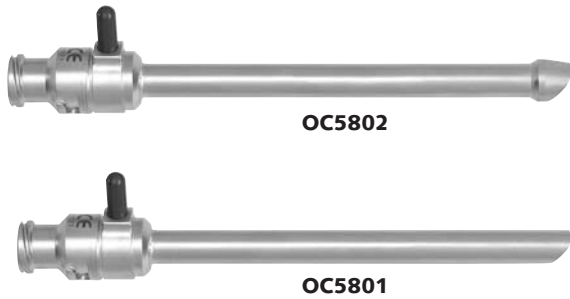


**QL6132**



**QL6230, T5102, QL6210**

# EnVision™ Autoclavable Arthroscopes and Sheath Systems



## Bridge Cannulas

|  | Cat. No. |
|--|----------|
| 4.6mm Stainless Steel Cannula .....  | OC4601   |
| 4.6mm Stainless Steel Retaining Cannula .....  | OC4602   |
| 4.6mm Stainless Steel 30°/70° Cannula .....  | OC4606   |
| (for use with ConMed Linvatec's T-series 4mm scopes)                                   |          |
| 4.6mm Trocar .....   | OC4603   |
| 4.6mm Conical Obturator .....  | OC4604   |
| 4.6mm Cannulated Obturator .....   | OC4605   |
| (compatible with ConMed Linvatec's 2220, T4906, and T4906-11 switching sticks)         |          |
| 5.8mm Stainless Steel Cannula .....  | OC5801   |
| 5.8mm Stainless Steel Retaining Cannula .....  | OC5802   |
| 5.8mm Stainless Steel 30°/70° Cannula .....  | OC5806   |
| (for use with ConMed Linvatec's T-series 4mm scopes)                                   |          |
| 5.8mm Trocar .....   | OC5803   |
| 5.8mm Conical Obturator .....  | OC5804   |
| 5.8mm Cannulated Obturator .....   | OC5805   |
| (compatible with ConMed Linvatec's 2220, T4906, and T4906-11 switching sticks)         |          |
| 5.8mm Extended Length Stainless Steel Cannula .....                                    | OC5801XL |
| (compatible with QuickLatch® 4mm scopes and T4911, T4912, or QL6210LX bridge adapters) |          |
| 5.8mm Extended Length Conical Obturator .....  | OC5804XL |
| 7.6mm Stainless Steel Cannula .....  | OC7601   |
| 7.6mm Stainless Steel Retaining Cannula .....  | OC7602   |
| 7.6mm Stainless Steel 30°/70° Cannula .....  | OC7606   |
| (for use with ConMed Linvatec's T-series 4mm scopes)                                   |          |
| 7.6mm Trocar .....   | OC7603   |
| 7.6mm Conical Obturator .....  | OC7604   |
| 7.6mm Cannulated Obturator .....   | OC7605   |
| (compatible with Linvatec's 2220, T4906, and T4906-11 switching sticks)                |          |
| Silicone Cannula Seal (latex free), 1per package .....                                 | 7557     |
| Infusion Adapter .....   | 7554     |

## Pressure Sensing Cannula System

For use with the 87k Fluid Control System and Apex Pressure Sensing tubing set. This system allows for true intra-articular pressure measurement.

- Dual cannulation to provide separate fluid inflow and pressure measurement
- Outer cannula is removable for patient entry and cleaning
- Fenestrations

**For a complete set-order:** Inner Cannula, Outer Cannula, Trocar, Obturator, and Inflow Adapter.

|   | Inner<br>Cannula | Outer<br>Cannula | Trocar | Obturator | Inflow<br>Adapter* |
|---|------------------|------------------|--------|-----------|--------------------|
| <b>5.1mm O.D.</b>   |                  |                  |        |           |                    |
| • 3.5" (89mm) Length .....  | 83255            | 83256            | 83257  | 83258     | 83234              |
| • 5.0" (127mm) Length .....   | 83225            | 83226            | 83227  | 83228     | 83234              |
| Inflow Adapter for 5.1mm O.D. cannula system (converts to Luer) ..... | 83234            |                  |        |           |                    |
| <b>6.3mm O.D.</b>   |                  |                  |        |           |                    |
| • 3.5" (89mm) Length .....  | 83244            | 83243            | 83241  | 83242     | 83235              |
| • 5.0" (127mm) Length .....   | 83264            | 83263            | 83261  | 83262     | 83235              |
| Replacement O-Ring for Outer Cannulas .....                           | 78807039595      |                  |        |           |                    |

## Replacement Parts for Quick-Connect® Sheath Sets

(T5830, T5831, T5832, T5833, T5870, T5871, T5872, and T5873)

Quick-Connect sheaths are compatible with ConMed Linvatec's non-QuickLatch® 4mm scopes.

|  | Cat. No. |
|--|----------|
| 5.8mm Fenestrated 30° Sheath Body.....         | T5834    |
| 5.8mm Non-Fenestrated 30° Sheath Body.....     | T5835    |
| 5.8mm Fenestrated 30°/70° Sheath Body.....     | T5874    |
| 5.8mm Non-Fenestrated 30°/70° Sheath Body..... | T5875    |
| 4.5mm Switching Stick.....                     | T5845    |
| Single Stopcock Bridge.....                    | T5811    |
| Double Stopcock Bridge.....                    | T5812    |
| Blunt Obturator.....                           | T5803    |
| Conical Obturator.....                         | T5804    |
| Sharp Trocar.....                              | T5805    |
| Single Stopcock Assembly.....                  | T5801    |
| Double Stopcock Assembly.....                  | T5802    |
| Stopcock Lock.....                             | T5814    |
| Replacement O-ring for Sheath.....             | T4908    |
| Replacement Stopcock Nut.....                  | T4905    |

## Laparoscopes

EnVision Autoclavable Endoscopes offer excellent optical performance with state-of-the-art optical systems. Sapphire lenses ensure durability, decreasing costly repairs.

### 5.5mm Autoclavable Endoscopes

- Working length 300mm

|                | Eyecup | Cartridge |
|----------------|--------|-----------|
| 5.0mm 0°.....  | T5200  | T5201     |
| 5.0mm 30°..... | T5230  | T5231     |
| 5.0mm 45°..... | T5244  | T5245     |

|  | Cat. No. |
|--|----------|
| 0 degree laparoscope with angled light post..... | 5502     |
| 30 degree lap scope with angled light post.....  | 5532     |

### 5.0mm Wide Angle Endoscope

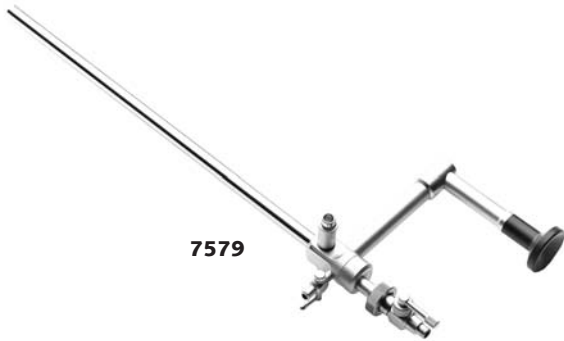
|                | Eyecup | Cartridge |
|----------------|--------|-----------|
| 5.0mm 30°..... | TSV530 | TSV531    |

### 10mm Autoclavable Endoscope

- Working length 325mm

|               |       |       |
|---------------|-------|-------|
| 10mm 0°.....  | T1000 | T1001 |
| 10mm 30°..... | T1030 | T1031 |
| 10mm 45°..... | T1045 | T1046 |





## Operative Laparoscopes

Cat. No.

|   |        |
|---|--------|
| 10mm, 0° Operating Eyecup Laparoscope (5mm working channel) ..... | 7579   |
| 10mm, 0° Operating Eyecup Laparoscope w/reverse light post.....   | 7579.1 |
| Stopcock for 7579 .....   | 7107   |



## Wide-Angle Cartridge Hysteroscopes\*

|  |      |
|--|------|
| 4mm, 0° Cartridge Hysteroscope† .....  | 7542 |
| 4mm, 30° Cartridge Hysteroscope† ..... | 7543 |

## Wide-Angle Eyecup Hysteroscopes

|                                    |       |
|------------------------------------|-------|
| 4mm, 0° Eyecup Hysteroscope .....  | C7542 |
| 4mm, 30° Eyecup Hysteroscope ..... | C7543 |

## Hysteroscope Sheaths

|  |      |
|--|------|
| 8mm, 30° Operating Hysteroscope Sheath** .....               | 7564 |
| 8mm, 0° Operating Hysteroscope Sheath** .....                | 7565 |
| 5mm, 30° Diagnostic Hysteroscope Sheath for C7543/7543 ..... | 7566 |
| 5mm, 0° Diagnostic Hysteroscope Sheath for C7542/7542 .....  | 7567 |
| 4mm Blunt Obturator for 7566 and 7567 .....                  | 7568 |

\* U.S. Patent No. 5,347,988.

\*\* 2.35mm Instrument Channel.

† Made to order 6 - 8 weeks after receipt of order.

## VP1500 Digital Documentation System 2.2

Newly updated with 2.2 software, the VP1500 Digital Documentation System is the answer to your surgical video documentation needs. Advanced features in a simple package allow easy digital capture of still images and motion video clips with or without audio recording. The VP1500 can automatically print still images as they are captured, write images and video to CD/DVD and transfer the resulting patient "studies" to a computer network via a DICOM interface.

- Camera head button operated image capture
- Captures stills, JPEG or TIF format
- Records motion video in MPEG4/AVI format for optimum quality vs. compression
- Up to 8 hours of motion video storage
- Audio recording capability
- 50 procedure rolling patient archive
- Images and video clips are compatible with Adobe Photoshop, Premiere, Apple QuickTime, Windows type media players and most digital video editing programs
- Auto-print capability emulates video printer operation
- Burn to CD or DVD with embedded Linvatec Viewer software
- DICOM network interface for PACS system and EMR integration
- Compatible with Linvatec digital photo printers
- Includes: Controller, Mini-Keyboard, 2 x RGB cables, 2 x S-Video cables, Sony IZZITON cable, CD-R Disk and DVD-R Disk

### Specifications:

Dimensions: 10" w x 5.1" h x 18" d (27.4 cm x 13.1 cm h 50 cm d)

Weight: Approx. 21 lbs (9.5 kg)

Input Voltage Range: 100 - 240 VAC, 50 / 60 Hz.

Cat. No.

Digital Documentation System (NTSC) ..... VP1500

Digital Documentation System (PAL)..... VP1500P

### Accessories

Keyboard Tray for ConMed Linvatec 8179 Video Cart ..... C3154

Footswitch, Sony FS-20..... VP1502

Replacement USB Printer Cable..... VP2754

RGB Cable, HD-15 to 4-BNC, 6 ft. .... VP9501

USB Keyboard Extension Cable ..... VP9502

Keyboard Tray for ConMed Linvatec VP6500 Series Video Carts ..... VP6542

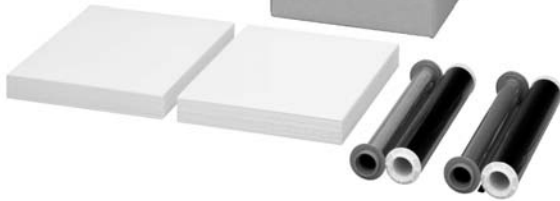




**VP2750**



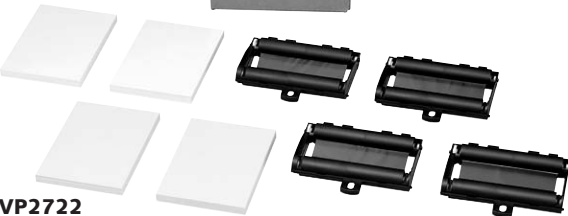
**VP2751**



**VP2721**



**VP2722**



## Sony UP-D55MD Digital Color Printer

Complete your digital documentation system with a digital photo printer from Sony. This high-quality medical-grade printer produces exceptional images with fast output. The UP-D55MD is an excellent choice for documenting surgery on archive quality prints.

- Recommended for use with Linvatec VP1500 and VP1500P Digital Documentation Systems
- High resolution, photo quality images
- Large, A5 (video printer) sized prints
- High speed USB 2.0 interface
- Includes: 120 V power cord, UPC-55 (100 Sheets & 1 Ribbon) and 3 ft. USB cable

### Specifications

Print Speed: Approx. 20 seconds

Resolution: 379 DPI

Paper Size: 7.1" x 6" (17.8 cm x 15.2 cm)

Dimensions: 11.1" w x 5.0" h x 15.8" d (28 cm x 13 cm h 40 cm d)

Weight: Approx. 9.0 lbs (19.1 kg)

Input Voltage Range: 100 – 120 VAC, 50/60 Hz, 220 – 240 VAC 50/60 Hz.

Cat. No.

Sony UP-D55MD Digital Color Printer ..... VP2750

Sony UPC-55 Color Print Pack (2 x 100 Sheets and 2 Ribbons) ..... VP2751

### Accessories

Ink Ribbon Holder for UP-D55MD Printer ..... VP2752

Paper Tray for Sony UP-D55MD Printer ..... VP2753

USB Printer Cable, 3 ft (90 cm) ..... VP2754

## Sony UP-D23MD Digital Color Printer

Complete your digital documentation system with this economical but high performance digital photo printer. This high-quality medical-grade printer produces exceptional images with fast output and high resolution. The UP-D23MD is an excellent choice for documenting surgery on archive quality prints.

- Recommended for use with Linvatec VP1500 and VP1500P Digital Documentation Systems
- High resolution, photo quality images
- High speed USB 2.0 interface
- Includes: 120 V power cord, UPC-21L (10 Sheets & 1 Ribbon) and 3 ft. USB cable

### Specifications

Print Speed: Approx. 30 seconds

Resolution: 403 DPI

Paper Size: 3.6" x 5.0" (14.2 cm x 19.6 cm)

Dimensions: 8.4" w x 5.0" h x 15.8" d (21.4 cm x 13 cm h 40 cm d)

Weight: Approx. 6.6 lbs (14.5 kg)

Input Voltage Range: 100 – 120 VAC, 50 / 60 Hz, 220 – 240 VAC 50/60 Hz.

Sony UP-D23MD Digital Color Printer ..... VP2721

Sony UPC-21L Color Print Pack (4 x 50 sheets and 4 Ribbons) ..... VP2722

### Accessories

USB Printer Cable, 3 ft (90 cm) ..... VP2754

## 300 Watt Xenon Light Source

The 300 Watt Xenon Light Source will provide intense illumination necessary for demanding, advanced endoscopic procedures. The unit is designed to complement the IM3300 and IM3301 cameras, and is also fully functional on its own. Features include:

- 300 watt Xenon bulb
- Communication channel for direct link to 8180A and 8180AC cameras
- Automatic shutter provides quick response time to light level changes
- Internal self-diagnostics
- Universal light guide receptacle
- Standby button
- Enhanced numerical aperture
- Improved light distribution
- Field upgradeable software

Cat. No.

|   |        |
|---|--------|
| 300 Watt Xenon Light Source, 115V.....      | LS7500 |
| Replacement Bulb with mounting bracket..... | LS7501 |



## Apex® 180 Watt Light Source

The Apex light source is equipped with a 180 watt Xenon short arc lamp. Designed to produce higher efficiency light collection and energy transfer from the lamp to the light guide, this light source has a 730 lumen output, which is equivalent to higher watt bulbs. A new IR filtering system and the use of a lower watt bulb reduces the amount of heat generated from the light source and keeps the distal end of the light guide cooler. The light source can be manually adjusted from the front panel and is compatible with a universal light guide cable and a Karl Storz light guide adapter. Use the Apex 180 watt light source with any of the Linvatec controllers or on its own.

|  |       |
|--|-------|
| Apex 180 Watt Light Source.....                            | C3140 |
| 180 Watt Xenon Replacement Bulb with mounting bracket..... | C3141 |



## Universal Light Guides

- Autoclavable
- Superior light transmission
- Lightweight and flexible
- Universal fittings

|   |       |
|---|-------|
| 3mm Universal Light Guide, 10'.....     | C3279 |
| 5mm Universal Light Guide, 10'.....     | C3278 |
| Wolf, Dyonics Scope Fitting.....        | 7451  |
| ACMI Scope Fitting.....                 | 7452  |
| Storz, Olympus Scope Fitting.....       | 7453  |
| Wolf, Dyonics Light Source Fitting..... | 7455  |
| ACMI Light Source Fitting.....          | 7456  |
| Storz Light Source Fitting.....         | 7457  |
| Olympus Light Source Fitting.....       | 7458  |
| Weck Xenon Light Source Fitting.....    | 7462  |





## ConMed Linvatec 40L – Dual Port Insufflator

The ConMed Linvatec 40L Insufflator exhibits the state-of-the-art in insufflation and has advanced features for all types of laparoscopic surgery. The 40L Insufflator is compatible with three ConMed Linvatec insufflation tubing sets to ensure tubing standardization with previous Linvatec insufflators. Uses one or two warmers (or humidifier-warmers) per console (sold separately).

### Advanced New Features for Enhanced Safety

- 40 LPM maximum flow Rate-Safe insufflation for any laparoscopic procedure
- Dual gas outputs – Delivers twice the actual flow rate of single port insufflators
- CPS™ compatible – Continuous Pressure Sensing increases average flow rate, manages leaks better and eliminates the “breathing effect”. (CPS tubing sold separately)
- Gas warmer and humidifier compatible – Ergonomic delivery of body temperature humidified CO<sub>2</sub>
- Sm@Rt™ compatible – \*Nurse’s Assistant™ Touch Screen Control and display of insufflator functions and readings
- Video Display – Displays pressure flow and volume readings on a video monitor

### Specifications:

- Dimensions: 13.3" w x 6.9" h x 14.8" d (34cm x 18cm x 38cm)
- Weight: Approx. 24 lbs (10.9 kg)
- Input Voltage Range: 90 - 240 VAC, 50 - 60 Hz

Cat. No.

ConMed Linvatec 40L Dual Port Insufflator ..... GS1002



## ConMed Linvatec 35L - Single Port Insufflator

The ConMed Linvatec 35L Insufflator is an economical high-performance insufflation system. The 35L Insufflator utilizes many of the same features as the 40L Insufflator for safe distension pressure control during all phases of laparoscopic surgery. The 35L is also compatible with three ConMed Linvatec insufflation tubing sets to ensure tubing standardization with existing insufflation systems.

### High-Performance and Economical

- 35 LPM maximum gas flow
- Gas warmer and humidifier compatible – Ergonomic delivery of body temperature, humidified CO<sub>2</sub>
- Single gas output – Simplicity and high-performance
- Automatically adjust to E-Tank and “wall” gas pressures

### Specifications:

- Dimensions: 13.3" w x 6.9" h x 14.8" d (34cm x 18cm x 38cm)
- Weight: Approx. 23 lbs (10.4 kg)
- Input Voltage Range: 90 - 240 VAC, 50 - 60 Hz

ConMed Linvatec 35L Single Port Insufflator ..... GS1000

## Accessories

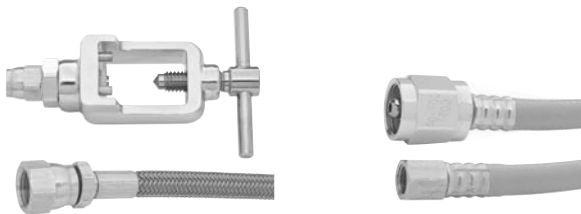
High Pressure Hose and Yoke for CO<sub>2</sub> E-Tank, 3' ..... GS1052  
(included with GS1000 and GS1002)

Low Pressure Hose for “wall” CO<sub>2</sub>, 7/16" female flare to DISS female, 2' ..... GS1053

Power cord, 115 VAC, 6' ..... C7104

Power Cord, 230 VAC, 10' ..... C7105

\*Pending 510K approval



GS1052

GS1053

## New CO<sub>2</sub> Warming System with Humidification

ConMed Linvatec's second generation warming system safely delivers body-temperature gas in an ergonomic and easy to use package. Choose between humidifier-warmer or warmer-only systems. Gas warming is achieved by inserting the small warmer assembly into the gas path near the distal end of a standard insufflation tubing set. Humidification is achieved through an injection of sterile water into a disposable sheath. The humidifier-warmer or warmer only assemblies are powered by either ConMed Linvatec 35L or 40L Insufflators.

- Safe – Warmer stays cool to touch
- Cost Effective – Uses standard insufflation tubing
- Easy to Use – Lightweight and ergonomic
- Flexible – Choice of humidifier-warmer or warmer-only systems

Cat. No.

## CO<sub>2</sub> Humidifier - Warmer

- CO<sub>2</sub> Humidifier - Warmer assembly, reusable ..... \*GS1014
- CO<sub>2</sub> Humidifier - Sheath and tubing set w/filter, disposable..... GS1015
- Cleaning Brushes for Warmer assembly 10/pkg ..... GS1054

## CO<sub>2</sub> Warmer Only

- CO<sub>2</sub> Warmer, in-line, reusable ..... \*\*GS1012
- Cleaning Brushes for Warmer assembly 10/pkg ..... GS1054

\*Requires GS1015 sheath and tubing set.

\*\*Requires insufflation tubing set

## CPS™ Continuous Pressure Sensing Tubing Set (Latex Free)

The ConMed Linvatec CPS feature enhances insufflation safety and performance by increasing average flow rate, maintaining stable pressure during gas leaks and eliminating the “breathing effect” during insufflation. Compatible only with the ConMed Linvatec 40L Insufflator (GS1002).

- CPS Tubing Set, disposable, with filter ..... GS1013

## CO<sub>2</sub> Output Adapters for ConMed Linvatec Insufflators

Standardize to one tubing set with Linvatec insufflator gas port adapters. These stainless steel adapters attach to your Linvatec 35L or 40L insufflator to allow use of tubing sets made for ConMed Linvatec C7000 or C7000A Insufflators. The adapters are non-rotating and include tethers for permanent attachment to ConMed Linvatec 35L or 40L Insufflator chassis. Order one each of the desired adapter for the GS1000 or two each for the GS1002.

- Adapter, CO<sub>2</sub> Output, CPC to IEC (for C7011 tubing) ..... GS1050
- Adapter, CO<sub>2</sub> Output, CPC to Luer (for C7010 tubing) ..... GS1051

## Insufflation Tubing Sets (Latex Free)

ConMed Linvatec offers three different insufflation tubing sets to meet your standardization needs.

- Insufflation tubing, disposable, CPC to Luer, with filter ..... GS1016
- Insufflation tubing set, disposable, Luer to Luer, with filter ..... C7010
- Insufflation tubing set, disposable, IEC to Luer, with filter ..... C7011



GS1014

GS1015

GS1054



GS1012



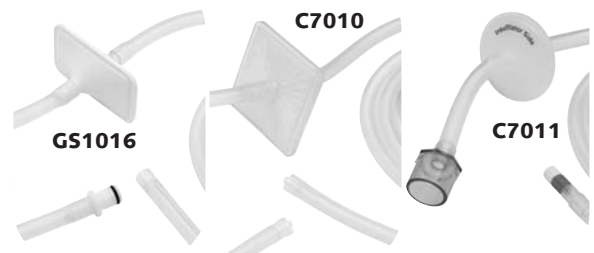
GS1013



GS1050



GS1051



GS1016

C7010

C7011



## VP4623 and VP4632 High Definition LCD Monitors

- Fully HD and Digital Capable
- Unrivalled 1920 x 1200 Resolution (VP4623)
- 1366 x 768 Resolution (VP4632)
- Fully Compliant FDA, UL, and CE Approved
- Sealed Front Panel in Light-weight Design with VESA Mount
- Wide-screen 16:9 aspect ratio
- PIP functionality (VP4623)

Cat. No.

23" High Definition LCD Monitor..... VP4623

32" High Definition LCD Monitor..... VP4632



## VP4619 19" LCD Monitor

- Digital Capable
- 1280 x 1024 Resolution
- 4:3 aspect ratio

Cable, Izziton Monitor Record Light ..... 7149

19" LCD Monitor NDS..... VP4619



VP4619

## VP4621 Sony LMD2140MD LCD Monitor

- Digital Capable
- 1024 x 768 Resolution
- 4:3 aspect ratio

Sony LMD2140MD LCD Monitor ..... VP4621

## Sony UP-55MD\L Color Video Printer

The VP2755 (Sony UP-55MD) replaces the C3149 (Sony UP-51MD). The new VP2755 has improved print quality, is fast, easy-to-use and efficient for high volume surgical facilities. The VP2755 is also a video printer version of the VP2750 Digital Color Printer. The two products use the same media pack (VP2751). The VP2755 is factory configured to be ready for use with minimal adjustment.

### Features

- Stores a file of each printed image to an external USB Drive
- Pre-configured to be ready-for-use with minimal adjustment
- High resolution, archive quality, photo-like prints
- 20 – 30 second print time
- 100 sheet capacity (Media is same as VP2750 and not compatible with C3149)
- 6 in. x 7 in. Paper Size
- Chassis is 40% smaller and 10 lbs lighter than C3149 Video Printer (UP-51MD)

Cat. No.

|  |          |
|--|----------|
| Sony UP-55MD\L Color Video Printer .....       | VP2755   |
| Ext. Warranty Sony UP-55MD Video Printer ..... | VP2755EW |
| Refurb, Sony UP-55MD\L Video Printer .....     | VP2755R  |

## Sony DVO-1000MD DVD Recorder

The VP3600 is a medical grade DVD Recorder. The VP3600 replaces the VP3500 and C3178 VCRs which have been discontinued. The new VP3600 creates DVD video discs suitable for playback in consumer DVD players and computers (as DVD video only).

### Features

- Professional quality, MPEG2 recording with Dolby stereo sound
- Fast disk finalization — eject disk within 2 minutes of recording completion
- Recorded disks play in consumer DVD players and personal computers (as DVD-Video only)
- DVO — Recover: recover video from hard drive if power failure — up to 30 hours stored
- Supports Sony Izziton recording light (Cat. No. 7149)
- 3 recording modes — HQ, SP and LP for up to 3 hours of recording time
- DVD+RW disk format — rewrite capability on affordable media
- Optional RM-P110 (VP3601) keyboard for patient data entry (future release)
- Canopus editing software included in package (for PC only)

|                                   |        |
|-----------------------------------|--------|
| Sony DVO-1000MD DVD Recorder..... | VP3600 |
|-----------------------------------|--------|





## ConMed Linvatec Video Cart

Like nothing else on the market, ConMed Linvatec introduces the next generation video cart. The VP8500 Video Cart provides the operating room with clean lines, new features, and added flexibility. Providing a platform for High Definition or Enhanced Definition equipment, The VP8500 is designed to be as forward looking as the equipment on its shelves.

- Monitor yolk for the VP4632
- Five adjustable 14" wide shelves
- HD-SDI output for auxiliary monitor
- Stainless steel arms
- Built-in isolation transformer and cord reel
- Lockable rear doors
- CO<sub>2</sub> tank holder

Cat. No.

|                            |        |
|----------------------------|--------|
| Video Cart, Standard ..... | VP8500 |
| Footpedal Storage .....    | VP8510 |
| Secondary Arm .....        | VP8520 |
| Infusion Holder .....      | VP8530 |
| 17" Wide Shelf .....       | VP8540 |

## ConMed Linvatec Multi-Specialty Video cart

This top-of-the-line video cart maximizes ergonomics and security with a self retracting power cord and locking front and rear doors. With a gas bottle holder and infusion pole, the VP6502 comes equipped for multiple surgical specialties.

- Main power switch, 10 Outlet power strip and 15 ft. self-retracting power cord
- Locking front and rear doors
- Full length handle and accessory holder at each corner
- 5 Easy-adjust shelves
- 5" twin wheels (two locking)
- Cable management system
- Infusion pole and CO<sub>2</sub> tank holder
- Custom mounting tray for 20" ConMed Linvatec video monitor
- Integrated isolation transformer

### Specifications

Dimensions: 53" h x 27" w x 29" d (135 cm h x 69 cm w 73 cm d)

Cart Weight: Approx. 230 lbs (508 kg)

Shipping Weight: 280 lbs (619 kg)

Input Voltage: 120 VAC, 60 Hz

|   |        |
|---|--------|
| ConMed Linvatec Multi-Specialty Video Cart..... | VP6502 |
|---|--------|

## ConMed Linvatec Premium Video cart

ConMed Linvatec's best selling video cart features a self-retracting power cord and locking rear doors. Configure the VP6501 with optional accessories for use in one or many surgical specialties.

- Main power switch, 10 Outlet power strip and 15' self-retracting power cord
- Locking rear doors
- Full length handle and accessory holder at each corner
- 5 Easy-adjust shelves
- 5" twin wheels (two locking)
- Cable management system
- Custom mounting tray for 20" ConMed Linvatec video monitor
- Integrated isolation transformer

### Specifications

Dimensions: 53" h x 27"w x 29"d (135 cm h x 69 cm w 73 cm d)

Cart Weight: Approx. 205 lbs (453 kg)

Shipping Weight: 255 lbs (564 kg)

Input Voltage: 120 VAC, 60 Hz, 13.5 Amps maximum

Cat. No.

ConMed Linvatec Premium Video Cart ..... VP6501



## ConMed Linvatec Standard Video cart

The ConMed Linvatec Standard Video Cart combines simplicity and ergonomics to provide an affordable alternative to more expensive video carts. Add optional accessories and video display mounting options as required (not compatible with VP6527 or VP6529 Main Flat Panel Arms).

- Main power switch, 10 Outlet power strip and 15' power cord
- Full length handle and accessory holder at each corner
- 5 Easy-adjust shelves
- 5" twin wheels (two locking)
- Cable management system
- Custom mounting tray for 20" ConMed Linvatec video monitor
- Integrated isolation transformer

### Specifications

Dimensions: 53" h x 27"w x 29"d (135 cm h x 69 cm w 73 cm d)

Cart Weight: Approx. 230 lbs (508 kg)

Shipping Weight: 280 lbs (619 kg)

Input Voltage: 120 VAC, 60 Hz, 13.5 Amps maximum

ConMed Linvatec Standard Video Cart ..... VP6500





## ConMed Linvatec Assistant Video Cart

This Assistant cart can be upgraded at any time to function as a more full featured video cart. Add optional accessories and video display mounting options as required (not compatible with VP6527 or VP6529 Main Flat Panel Arms).

- Main power switch, 10 Outlet power strip and 15 ft. self-retracting power cord
- Locking rear doors
- Full length handle and accessory holder at each corner
- 2 Easy-adjust shelves
- 5" twin wheels (two locking)
- Cable management system
- Custom mounting tray for 20" Linvatec video monitor
- 1 full width drawer
- Integrated isolation transformer

### Specifications

Dimensions: 53" h x 27" w x 29" d (135 cm h x 69 cm w 73 cm d)

Cart Weight: Approx. 205 lbs (453 kg)

Shipping Weight: 255 lbs (564 kg)

Input Voltage: 120 VAC, 60 Hz, 13.5 Amps maximum

Cat. No.

ConMed Linvatec Assistant Video Cart ..... VP6503



## ConMed Linvatec Articulating Arm Video Cart

The VP6504 video cart includes an articulating arm that is compatible only with the VP4621 monitor.

ConMed Linvatec Articulating Arm Cart, 120 VAC .....VP6504

ConMed Linvatec Rolling Stand (for Flat Panel) .....VP4602

## Main Flat Panel Post Mount

Mounts a main flat panel in place of the standard CRT tray on any VP6500 series cart.

- 18" high post with Pan and Tilt
- Internal cable channel for easy cleaning
- 100 mm flat panel mount (VESA Standard)
- Accommodates 25 lb maximum flat panel weight

Cat. No.

Main Flat Panel Post Mount..... VP6526

Heavy Panel, Flat Panel Post Mount ..... VP6565



VP6526

## Secondary Flat Panel Arm

Add this clever pole (handle) mounted arm to any VP6500 series video cart for dual video monitor applications.

- Mounts to any VP6500 series cart pole holder (handle)
- Up to 17" extension from any corner of cart
- 270° arm rotation with pan and tilt
- Not compatible with VP6527 or VP6529 Primary Flat Panel Arms

Secondary Flat Panel Arm ..... VP6528



## Rotating CRT Tray

Raise and rotate a standard Sony Medical video monitor with this VP6520 rotating CRT tray. Replaces the standard CRT tray on any VP6500 series video cart.

- 360° tray rotation
- 4" platform height
- Compatible with Linvatec 7121A and 7121B video monitors

Rotating CRT Tray ..... VP6520



## Infusion Pole

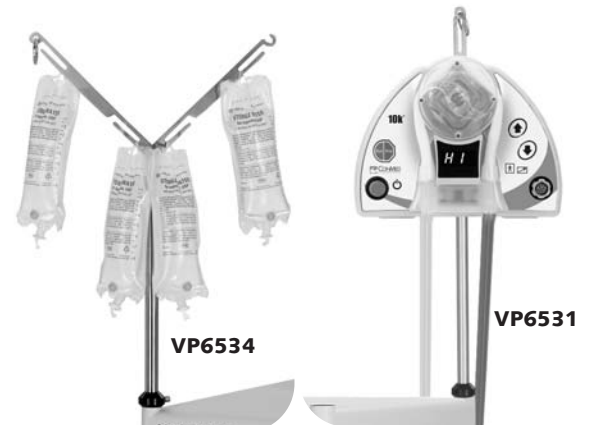
- Rear mounted pole fully retracts into holder (handle)
- Holds up to four, 3 liter fluid bags (12 liter maximum)
- Place up to two VP5434's in one cart

Infusion Pole, 4-bag..... VP6534

## Pole Pump Mount

- Allows for adjustable pump height
- Compatible with ConMed Linvatec 10k Fluid Pump
- Mounts to any corner of a VP6500 series cart

Pole Pump Mount..... VP6531



VP6534

VP6531



## CO<sub>2</sub> Tank Holder

- Holds one or two medical-grade CO<sub>2</sub> E-tanks
- Swings out for access to rear of cart
- Locks securely in place

Cat. No.

CO<sub>2</sub> E-Tank Holder ..... VP6533

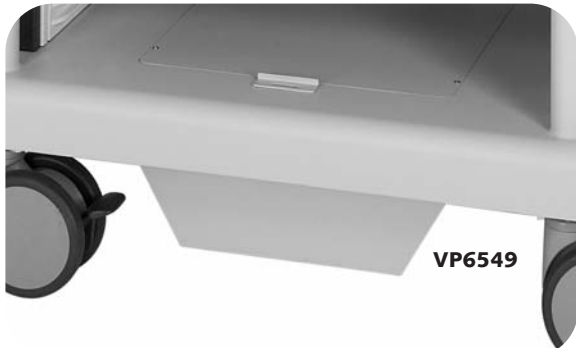


VP6542

## Keyboard Tray

- Ideal for storing the VP1500 Digital Documentation keyboard
- Mounts under any standard VP6500 shelf
- Interior dimensions 1.5" h x 17.5" w x 9.0" d

Keyboard Tray ..... VP6542



VP6549

## Undercarriage

- Housing for VP6545 isolation transformer and VP6547 cord reel
- Holds additional ballast weights for tip stability
- Included with VP6501 and VP6502 video carts

Undercarriage ..... VP6549



VP6545

## Isolation Transformer

- Limits current leakage for entire cart
- Requires VP6549 undercarriage for VP6500 and VP6503 carts

Isolation Transformer ..... VP6545

### Self Retracting Power Cord Module

- 15' power cord on self-retracting reel
- Requires VP6549 undercarriage for VP6500 and VP6503 carts

Power cord reel module ..... VP6547

Cat. No.

### Drawer

- Full width drawer with lock and set of two keys
- Mounts under any standard VP6500 series shelf
- Interior dimensions 4.5" h x 17.5" w x 14.5" d

Drawer with lock..... VP6548

### Miscellaneous Accessories

Replacement Shelf..... VP6543

Video Monitor Holding Strap ..... VP6550

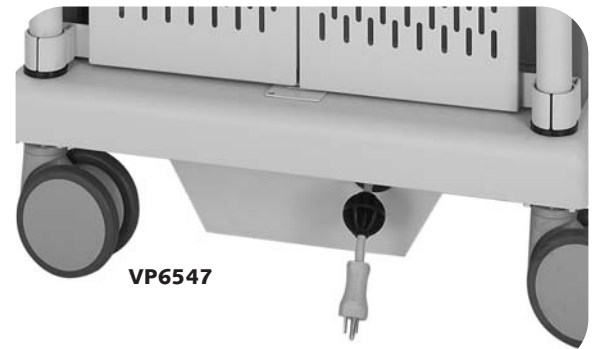
Grip "O" Console Feet Holders, Qty 2..... 7444

### Ordering Information

- The video carts may also be customized with optional accessories. Accessories may not be compatible with all models. Check the product descriptions for details.
- All display mounting options and accessories are sold separately but are factory installed when ordered with a video cart.
- When ordering multiple carts of differing accessory configurations, please specify the quantity and configuration of each type cart.

### Shipping Information

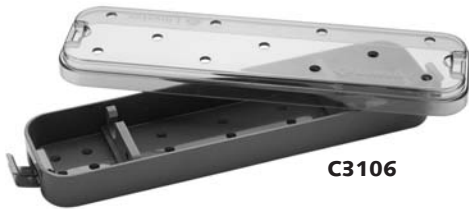
- For U.S. deliveries, all video carts ship via ground transportation from Florida. Allow 48 hours for order processing and 5 to 7 days for delivery.
- Inspect video cart packaging for shipping damage prior to accepting delivery. Refuse delivery if outer banding is loose or if damage to the cart or outer packaging is apparent. Contact Linvatec customer service for more information.



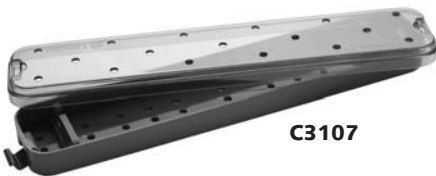
VP6547



**7546**



**C3106**



**C3107**



**C3109**

## Plastic Trays

ConMed Linvatec offers an assortment of plastic trays to hold scopes and other sterilizable video and hand instruments for storage, sterilization and soaking. Scopes are cradled in protective silicone to prevent possible damage during handling, soaking or storage.

Cat. No.

Arthroscope Tray (holds 2 scopes)  
Dimensions 3.93"w x 1.5"h x 10.53"d ..... 7546

Autoclavable Arthroscope Tray (holds 2 scopes)  
Dimensions 3.2"w x 1.4" h x 12"d ..... C3106

Autoclavable Laparoscope Tray (holds 2 scopes)  
Dimensions 3.2"w x 1.4"h x 17"d ..... C3107

Autoclavable Tray for camera head, light guides, and scopes  
Dimensions 3.2"w x 2.25'h x 20.5'd ..... C3108

Autoclavable Tray-two inner trays. Holds multiple products for arthroscopic/laparoscopic procedures. Modular plastic tray holds camera head, light guide (bottom section), handpiece and pump remote (removable mid section), and arthroscopes and inflow devices (removable top sections). Laparoscopes or hysteroscopes can be placed in bottom or top sections.

Dimensions 9.7"w x 4.75"h x 20.5"D ..... C3109

## Soaking/Storage Trays

Plastic tray holds the scope for storage or soaking. The scope is cradled in protective silicone to prevent possible damage during handling, soaking or storage.

|   | Cat. No. |
|---|----------|
| Hysteroscope Tray, holds 2 scopes.....        | 7562     |
| Dimensions: 4.36" w x 1.35" h x 17.63" d      |          |
| Laparoscopic Tray, holds one 4.0mm Scope..... | 7563     |



## Ultra-Stop® Anti-Fog

Ultra-Stop is a transparent, and non-hazardous anti-fog agent which prevents lens fogging (similar to ethyl alcohol).

|                 |        |
|-----------------|--------|
| Ultra-Stop..... | 110201 |
|-----------------|--------|

Ultra-Stop is a registered trademark of Sigmapharm.



## Adapters

|  | Cat. No.    |
|--|-------------|
| BNC Female to RCA Male.....  | E52-076-000 |
| Phono Plug to .125" Mini Plug.....<br>(Used with all Sony® Printers) | E52-120-000 |
| RCA Female to RCA Male.....<br>(Used with 8128/8128A Printers)       | E52-152-000 |
| "S"-VHS Barrel Extender, Female to Male.....                         | 8149-01     |
| 3.5mm T-Splitter Cable .....   | IM9005      |
| Cable, 3.5mm to 3.5mm Stereo Remote.....                             | IM9001      |
| Cable, Izziton Monitor Record Light.....                             | 7149        |

## Bulbs

|  |        |
|--|--------|
| Bulb Assembly for C3140.....                                 | C3141  |
| With Bracket for LS7500.....                                 | LS7501 |
| With Bracket for 8425, 8425A, 8425E, 8435AE, 250W.....       | 8426   |
| With Bracket for 8430/8430W, Xenon, 8420E/8430WE, 300W ..... | 8431   |
| With Bracket for 172001, 250W .....                          | 172158 |

## Cables, Composite Video

|                     |         |
|---------------------|---------|
| 6' BNC Cable .....  | 8175-06 |
| 15' BNC Cable ..... | 8175-15 |
| 20' BNC Cable ..... | 8175-20 |

## Cables, Harness

|  |       |
|--|-------|
| "S" for 8180A, 8180AC, 8180, 8180C, 8170 ..... | 8199  |
| BNC for 8180A, 8180AC, 8180, 8180C, 8170.....  | 8199C |

## Cables, DVI-D

|   |        |
|---|--------|
| DVI-D video cable, DVI to DVI, 3 ft.....  | IM9020 |
| DVI-D video cable, DVI to DVI, 6 ft.....  | IM9021 |
| DVI-D video cable, DVI to DVI, 25 ft..... | IM9022 |

## Cables, HD-SDI

|  |        |
|--|--------|
| HD-SDI video cable, BNC to BNC, 3 ft.....  | IM9010 |
| HD-SDI video cable, BNC to BNC, 6 ft.....  | IM9011 |
| HD-SDI video cable, BNC to BNC, 25 ft..... | IM9012 |

## Cables, RGB

|  |       |
|--|-------|
| RGB Video Cable, 4' (BNC to BNC) .....                 | C3186 |
| RGB Video Cable, 6' (BNC to BNC).....                  | 8174  |
| RGB Video Cable, 25 pin Female to 25 pin Male.....     | 8167  |
| RGB Video Cable, 25 pin Female to 25 pin Female .....  | 8168  |
| RGB Video Cable, 25 pin Male to 4 Quad BNC, 10 ft..... | 8173  |

## Cables, "S" Video

|                      |          |
|----------------------|----------|
| 3' "S" Cable.....    | 8149-3   |
| 6' "S" Cable .....   | 8149-06  |
| 25' "S" Cable .....  | 8149-20  |
| 50' "S" Cable .....  | 8149-50  |
| 75' "S" Cable .....  | 8149-75  |
| 100' "S" Cable ..... | 8149-100 |

## Drapes

|                                       | Cat. No.    |
|---------------------------------------|-------------|
| 9" x 95" Camera Drape-Qty. 10** ..... | 9707        |
| 5" x 96" Camera Drape-Qty. 20** ..... | 60-3950-031 |

\*\*Latex free product  
†U.S. Patent No. 5,325,846

## Power Cords

|                           |         |
|---------------------------|---------|
| 1' Power Cord, 115v ..... | C7104-1 |
| 2' Power Cord, 115v ..... | C7104-2 |
| 3' Power Cord, 115v ..... | C7104-3 |
| 4' Power Cord, 115v ..... | C7104-4 |
| 6' Power Cord, 115v.....  | C7104   |
| Power Cord Kit .....      | C7104-k |
| 10' Power Cord, 230v..... | C7105   |

## Print/Ink Sets

|   |        |
|---|--------|
| Print/Ink Set, for 8122, 8124 (200 Prints) .....        | 8123   |
| Print/Ink Set, for 3172 (100 Prints).....               | C3173  |
| Print/Ink Set, 6/pk for C3172 .....                     | C3174  |
| Print/Ink Set, for 8132 (80 Prints) .....               | 8133   |
| Print/Ink Set, for 8132A (100 Prints).....              | 8133A  |
| Print/Ink Set, for 8134, 8134A, 8134B (100 Prints)..... | 8136   |
| Print/Ink Set, for 8141 (100 Prints) .....              | 8143   |
| Print/Ink Set, for 8128, 8128A (100 Prints).....        | 8129   |
| Print/Ink Set, for C3149 (200 Prints).....              | C3271  |
| Print/Ink Set, for VP2721 (200 Prints).....             | VP2722 |
| Print/Ink Set, for VP2750, VP2755 (200 Prints).....     | VP2751 |

## CD-Rom

|  |         |
|--|---------|
| Envision™ Autoclavable Camera Interactive Tour ..... | CD 003A |
|--|---------|

## Scope Cleaning Kit

|                                    |       |
|------------------------------------|-------|
| Autoclavable Polishing Paste ..... | T0001 |
|------------------------------------|-------|

## Coupler O-Rings

|                                 |       |
|---------------------------------|-------|
| Coupler, C-Mount, O-Rings.....  | C3240 |
| Coupler, V-Mount, O-Rings ..... | C3241 |

## Miscellaneous

|  |      |
|--|------|
| Grip – O's Stabilizer Rings .....                                      | 7444 |
| Fiber Optic Post Adapters, Wolf and Storz set (replacement part) ..... | 7513 |
| Fits all scopes.   |      |

## Crile Straight Dissecting Forceps

- Monopolar
- 360° Rotation
- Flushable port\*

Cat. No.

5mm dia. x 33cm ..... 116722

## Crile Curved Dissecting Forceps

- Monopolar
- 360° Rotation
- Flushable port\*

5mm dia. x 33cm ..... 116721

## Mixer Dissecting Forceps

- Monopolar
- 360° Rotation, Flushable port\*
- The 60° curve gives good visualization of duct and artery

10mm dia. x 33cm ..... 116703

## Meeker Dissecting Forceps

- Monopolar
- 360° Rotation
- Flushable port\*
- The 90° curve offers excellent visualization

10mm dia. x 33cm ..... 116850

## Debakey Straight Dissecting Forceps

- Monopolar
- 360° Rotation
- Flushable port\*
- Traditional atraumatic jaws

5mm dia. x 33cm .....116856

## Debakey Curved Dissecting Forceps

- Monopolar
- 360° Rotation
- Flushable port\*
- Traditional atraumatic jaws

5mm dia. x 33cm .....116858

\* U.S. Patent No. 5,290,308.





## Allis Grasping Forceps

- 360° Rotation
- Flushable port\*
- Ratchet
- 3 x 4 aggressive jaws hold tissue securely
- 1.25" jaws shown

Cat. No.

5mm dia. x 33cm, 1" jaw ..... 116712

5mm dia. x 33cm, 1.25" jaw ..... 116812



## Babcock Grasping Forceps

- 360° Rotation
- Flushable port\*
- Ratchet
- Atraumatic jaws hold and preserve hollow structures
- 2" jaws shown

10mm dia. x 33cm, 1" jaw ..... 116713



## Crile Straight Grasping Forceps

- 360° Rotation
- Flushable port\*
- Ratchet
- Grasps and manipulates tissue

5mm dia. x 33cm ..... 116730



## Crile Curved Grasping Forceps

- 360° Rotation
- Flushable port\*
- Ratchet
- Grasps and manipulates tissue

5mm dia. x 33cm ..... 116731



## Mixer Grasping Forceps

- 360° Rotation
- Flushable port\*
- Ratchet
- Grasps with 60° curve

10mm dia. x 33cm ..... 116732



## Meeker Grasping Forceps

- 360° Rotation
- Flushable port\*
- Ratchet
- Grasps with 90° curve

10mm dia. x 33cm ..... 116800

\* U.S. Patent No. 5,290,308.

## Kocher Grasping Forceps

- 360° Rotation
- Flushable port\*
- Ratchet. Straight
- 1 x 2 teeth
- Aggressive jaws hold tissue

Cat. No.

5mm dia. x 33cm ..... 116804

## Debakey Straight Grasping Forceps

- 360° Rotation
- Flushable port\*
- Ratchet
- Traditional atraumatic jaws grasp tissue

5mm dia. x 33cm ..... 116806

## Debakey Curved Grasping Forceps

- 360° Rotation
- Flushable port\*
- Ratchet
- Traditional atraumatic jaws grasp tissue

5mm dia. x 33cm ..... 116808

## Pennington Grasping Forceps

- 360° Rotation
- Flushable port\*
- Ratchet
- Delicate 2" atraumatic jaws hold lung type tissue

10mm dia. x 33cm ..... 116822

\* U.S. Patent No. 5,290,308.





## Metzenbaum Curved Scissors

- Monopolar
- 360° Rotation
- Flushable port\*
- Tensosharp® Blades

Cat. No.

5mm dia. x 33cm ..... 116708



## Mayo Curved Scissors

- Monopolar
- 360° Rotation
- Flushable port\*
- Tensosharp Blades

5mm dia. x 33cm ..... 116768

## Cord

Monopolar Cord, Reusable for Valleylab, Aspen, Bovie ..... 175601

\* U.S. Patent No. 5,290,308.

### 3-Prong Bulldog Hasson Grasper

- Aggressive jaws

|                             |                 |
|-----------------------------|-----------------|
| 5mm dia. x 30cm .....       | Cat. No. 113501 |
| Inner Tong for 113501 ..... | 113505          |

### 3-Prong Curved Hasson Grasper

- Allis-type toothed jaws

|                             |        |
|-----------------------------|--------|
| 5mm dia. x 30cm .....       | 113502 |
| Inner Tong for 113502 ..... | 113506 |

### 3-Prong Straight Hasson Grasper

- Allis-type toothed jaws

|                             |        |
|-----------------------------|--------|
| 5mm dia. x 30cm .....       | 113503 |
| Inner Tong for 113503 ..... | 113507 |

### Spring with Teflon® Guides

|                               |        |
|-------------------------------|--------|
| For all Hasson graspers ..... | 113509 |
|-------------------------------|--------|

### Hasson Open Laparoscopy Cannula

- Complete with Trocar Sleeve, Obturator and Cone Sleeve

|             |        |
|-------------|--------|
| Dia.        |        |
| 10.7mm..... | 118100 |
| 12.7mm..... | 118120 |

U.S. Patent No. 4,617,933.

### Hasson Cone Sleeve with Suture Ties

|             |        |
|-------------|--------|
| 10.7mm..... | 118101 |
|-------------|--------|

### Hasson Cone Sealing Caps

- Twelve per package
- Reusable
- Non-sterile

| Fits                                | Color       | Cat. No. |
|-------------------------------------|-------------|----------|
| 5mm Hasson Cone .....               | Blue .....  | 110003   |
| 7mm Hasson Cone.....                | Gray.....   | 110004   |
| 8mm Hasson Cone.....                | White.....  | 110005   |
| 10.7mm and 12.7mm Hasson Cone ..... | Black ..... | 110009   |





**Bi-Tec Thumb-Ring Handle**

Cat. No.

|                       |        |
|-----------------------|--------|
| 5mm dia. x 33cm ..... | 117660 |
| 5mm dia. x 45cm ..... | 117661 |



**Paddle Tip**

- For general use
- Stainless steel tip

|            |        |
|------------|--------|
| 33cm ..... | 117670 |
| 45cm ..... | 117671 |



**Basket Tip**

- For coagulating vessels, ducts and large structures
- Stainless steel tip

|            |        |
|------------|--------|
| 33cm ..... | 117672 |
| 45cm ..... | 117673 |



**Fine Tip**

- For delicate work and current concentration
- Stainless steel tip

|            |        |
|------------|--------|
| 33cm ..... | 117674 |
|------------|--------|



**Bi-Tec Reusable Bipolar Cord**

Oval Banana plugs for CONMED, ASPEN, BARD, BIRTCHEER, CONCEPT® and Valleylab generators.....117650

**Bi-Tec Reusable Bipolar Cord**

Single plug for EDER, ELMED and WOLF generators. ....117651

### Trocar Sleeve with Piston Valve

- Stainless Steel with Stopcock

| Dia.         | Length     | Cat. No. |
|--------------|------------|----------|
| 8mm .....    | 16cm ..... | 111800   |
| 10mm .....   | 16cm ..... | 111180   |
| 10.7mm ..... | 16cm ..... | 111110   |
| 12.7mm ..... | 16cm ..... | 125012   |

### Trocar Sleeve without Valve

- Fiberglass Insulated

|           |            |        |
|-----------|------------|--------|
| 5mm ..... | 16cm ..... | 111460 |
|-----------|------------|--------|

### Trocar Sleeve with Trap Door

- Stainless Steel without Stopcock

|           |            |        |
|-----------|------------|--------|
| 5mm ..... | 16cm ..... | 111262 |
|-----------|------------|--------|

- Fiberglass Insulated without Stopcock

|           |            |        |
|-----------|------------|--------|
| 5mm ..... | 16cm ..... | 111260 |
|-----------|------------|--------|

### Pyramidal Trocar

- Reusable
- Fits any reusable cannula

|                     |        |
|---------------------|--------|
| 5mm x 6.75" .....   | 112060 |
| 8mm x 6.9" .....    | 112080 |
| 10mm x 9.2" .....   | 112110 |
| 10.7mm x 7.2" ..... | 112107 |

### Trocar Sleeve Sealing Caps

- Twelve per package
- Reusable
- Non-sterile

| Fits                             | Color        | Cat. No. |
|----------------------------------|--------------|----------|
| 3mm, 4mm Trocar Sleeves .....    | Red .....    | 110001   |
| 5mm Trocar Sleeves .....         | Green .....  | 110002   |
| 7mm Trocar Sleeves .....         | Blue .....   | 110003   |
| 8mm Trocar Sleeves .....         | Gray .....   | 110004   |
| 10mm/10.7mm Trocar Sleeves ..... | Purple ..... | 110006   |
| 12.7mm Trocar Sleeves .....      | Orange ..... | 110010   |





## Suture Punch

- Soft tissue suturing device

Cat. No.

7mm Needle x 17cm Working Length, Straight..... 114809

7mm Needle x 17cm Working Length, Left Curve..... 114810

## Endoscopic Instrument Tray

- Holds twelve instruments upright

|   |          |
|---|----------|
|   | Cat. No. |
| 5.5" x 10" x 29.5" for 45cm instruments ..... | 161045A  |

## Verres Needle

|            |        |
|------------|--------|
| 10cm ..... | 120304 |
| 12cm ..... | 120305 |
| 15cm ..... | 120306 |

## Reducer/Blocker

- Thin walled

|   |        |
|---|--------|
| Reduces from 10.7mm and 10mm to 5mm ..... | 113653 |
|---|--------|

## Loop Guide

- For pre-tied ligature loops

|           |        |
|-----------|--------|
| 5mm ..... | 113655 |
|-----------|--------|

## Replacement Acorns

- For use with Behrman cannulas 153530 and Cohen-Eder cannulas 153510.

|                                     |        |
|-------------------------------------|--------|
| Small (1" length x .75" dia.) ..... | 153512 |
| Large (1" length x 1" dia.) .....   | 153511 |

## S-Shape Retractors

- Set of two

|                         |        |
|-------------------------|--------|
| Small, .375" wide ..... | 118371 |
| Large, .5" wide .....   | 118372 |

## Cleaning Brushes

|                              |        |
|------------------------------|--------|
| For 10mm Trocar Sleeve ..... | 103010 |
| For Verres Needle .....      | 103302 |
| For 3mm Biopsy Tong .....    | 103303 |
| For 3mm Trocar Sleeve .....  | 103601 |
| For 5mm Trocar Sleeve .....  | 103606 |
| For 8mm Trocar Sleeve .....  | 103808 |

## Flush Syringe

|                     |        |
|---------------------|--------|
| 5 per package ..... | 116698 |
|---------------------|--------|

## Tubing

|   |       |
|---|-------|
| Laparoflator Tubing, 16L, Disposable with filter, Luer Locks on both ends ..... | C7010 |
|---|-------|



153512



153511



# **ENDOSCOPIC SYSTEMS INDEX**

| Cat. No. | Description   | Page No.   |
|----------|---|------------|
| 5502     | 0 degree laparoscope with angled light post                             | 11         |
| 5532     | 30 degree lap scope with angled light post                              | 11         |
| 7107     | Stopcock for 7579   | 12         |
| 7149     | Cable, Izziton Monitor Record Light                                     | 18, 19, 28 |
| 7444     | Grip "O" Console Feet Holders, Qty 2                                    | 25, 28     |
| 7451     | Wolf, Dyonics Scope Fitting   | 15         |
| 7452     | ACMI Scope Fitting  | 15         |
| 7453     | Storz, Olympus Scope Fitting  | 15         |
| 7455     | Wolf, Dyonics Light Source Fitting                                      | 15         |
| 7456     | ACMI Light Source Fitting   | 15         |
| 7457     | Storz Light Source Fitting  | 15         |
| 7458     | Olympus Light Source Fitting  | 15         |
| 7462     | Weck Xenon Light Source Fitting   | 15         |
| 7513     | Fiber Optic Post Adapters, Wolf and Storz set (replacement part)        | 28         |
| 7542     | 4mm, 0° Cartridge Hysteroscope  | 12         |
| 7543     | 4mm, 30° Cartridge Hysteroscope   | 12         |
| 7546     | Arthroscope Tray (holds 2 scopes)Dimensions 3.93" w x 1.5"h x 10.53" d  | 26         |
| 7554     | Infusion Adapter  | 10         |
| 7557     | Silicone Cannula Seal (latex free), 1per package                        | 10         |
| 7562     | Hysteroscope Tray, holds 2 scopes Dimensions: 4.36"w x 1.35"h x 17.63"d | 27         |
| 7563     | Laparoscopic Tray, holds one 4.0mm Scope                                | 27         |
| 7564     | 8mm, 30° Operating Hysteroscope Sheath                                  | 12         |
| 7565     | 8mm, 0° Operating Hysteroscope Sheath                                   | 12         |
| 7566     | 5mm, 30° Diagnostic Hysteroscope Sheath for C7543/7543                  | 12         |
| 7567     | 5mm, 0° Diagnostic Hysteroscope Sheath for C7542/7542                   | 12         |
| 7568     | 4mm Blunt Obturator for 7566 and 7567                                   | 12         |
| 7579     | 10mm, 0° Operating Eyecup Laparoscope (5mm working channel)             | 12         |
| 7579.1   | 10mm, 0° Operating Eyecup Laparoscope w/reverse light post              | 12         |
| 8123     | Print/Ink Set, for 8122, 8124 (200 Prints)                              | 28         |
| 8129     | Print/Ink Set, for 8128, 8128A (100 Prints)                             | 28         |
| 8133     | Print/Ink Set, for 8132 (80 Prints)                                     | 28         |
| 8136     | Print/Ink Set, for 8134, 8134A, 8134B (100 Prints)                      | 28         |
| 8143     | Print/Ink Set, for 8141 (100 Prints)                                    | 28         |
| 8167     | RGB Video Cable, 25 pin Female to 25 pin Male                           | 28         |
| 8168     | RGB Video Cable, 25 pin Female to 25 pin Female                         | 28         |
| 8173     | RGB Video Cable, 25 pin Male to 4 Quad BNC, 10 ft.                      | 28         |
| 8174     | RGB Video Cable, 6' (BNC to BNC)  | 28         |
| 8199     | Cables, Harness "S" for 8180A, 8180AC, 8180, 8180C, 8170                | 28         |
| 8426     | With Bracket for 8425, 8425A, 8425E, 8435AE, 250W                       | 28         |
| 8431     | With Bracket for 8430/8430W, Xenon, 8420E/8430WE, 300W                  | 28         |
| 9707     | 9" x 95" Camera Drape-Qty. 10   | 28         |
| 83225    | 5.1mm O.D., 5.0" (127mm) Length, Inner Cannula                          | 10         |
| 83226    | 5.1mm O.D., 5.0" (127mm) Length, Outer Cannula                          | 10         |
| 83227    | 5.1mm O.D., 5.0" (127mm) Length, Trocar                                 | 10         |
| 83228    | 5.1mm O.D., 5.0" (127mm) Length, Obturator                              | 10         |
| 83234    | 5.1mm O.D., 5.0" (127mm) Length, Inflow Adapter                         | 10         |
| 83234    | 5.1mm O.D., 3.5" (89mm) Length, Inflow Adapter                          | 10         |
| 83235    | 6.3mm O.D., 5.0" (127mm) Length, Inflow Adapter                         | 10         |
| 83235    | 6.3mm O.D., 3.5" (89mm) Length, Inflow Adapter                          | 10         |
| 83241    | 6.3mm O.D., 3.5" (89mm) Length, Trocar                                  | 10         |
| 83242    | 6.3mm O.D., 5.0" (127mm) Length, Obturator                              | 10         |
| 83242    | 6.3mm O.D., 3.5" (89mm) Length, Obturator                               | 10         |
| 83243    | 6.3mm O.D., 3.5" (89mm) Length, Outer Cannula                           | 10         |
| 83244    | 6.3mm O.D., 3.5" (89mm) Length, Inner Cannula                           | 10         |
| 83255    | 5.1mm O.D., 3.5" (89mm) Length, Inner Cannula                           | 10         |
| 83256    | 5.1mm O.D., 3.5" (89mm) Length, Outer Cannula                           | 10         |
| 83257    | 5.1mm O.D., 3.5" (89mm) Length, Trocar                                  | 10         |
| 83258    | 5.1mm O.D., 3.5" (89mm) Length, Obturator                               | 10         |
| 83261    | 6.3mm O.D., 5.0" (127mm) Length, Trocar                                 | 10         |
| 83263    | 6.3mm O.D., 5.0" (127mm) Length, Outer Cannula                          | 10         |
| 83264    | 6.3mm O.D., 5.0" (127mm) Length, Inner Cannula                          | 10         |
| 103010   | Cleaning Brushes, For 10mm Trocar Sleeve                                | 37         |
| 103302   | Cleaning Brushes, For Verres Needle                                     | 37         |
| 103303   | Cleaning Brushes, For 3mm Biopsy Tong                                   | 37         |
| 103601   | Cleaning Brushes, For 3mm Trocar Sleeve                                 | 37         |
| 103606   | Cleaning Brushes, For 5mm Trocar Sleeve                                 | 37         |
| 103808   | Cleaning Brushes, For 8mm Trocar Sleeve                                 | 37         |
| 110001   | 3mm, 4mm Trocar Sleeves, Red  | 35         |
| 110002   | 5mm Trocar Sleeves, Green   | 35         |
| 110003   | Hasson Cone Sealing Caps, 5mm Hasson Cone, Blue                         | 33, 35     |

# Numerical Index



| Cat. No.    | Description   | Page No. |
|-------------|---|----------|
| 110004      | Hasson Cone Sealing Caps, 7mm Hasson Cone, Gray   | 33, 35   |
| 110005      | Hasson Cone Sealing Caps, 8mm Hasson Cone, White  | 33       |
| 110006      | 10mm/10.7mm Trocar Sleeves, Purple  | 35       |
| 110009      | Hasson Cone Sealing Caps, 10.7mm and 12.7mm Hasson Cone, Black  | 33       |
| 110010      | 12.7mm Trocar Sleeves, Orange   | 35       |
| 110201      | Ultra-Stop®   | 27       |
| 111110      | Trocar Sleeve with Piston Valve, 10.7mm, 16cm   | 35       |
| 111180      | Trocar Sleeve with Piston Valve, 10mm, 16cm   | 35       |
| 111260      | Trocar Sleeve without Valve, 5mm, 16cm  | 35       |
| 111262      | Trocar Sleeve without Valve, 5mm, 16cm  | 35       |
| 111460      | Trocar Sleeve without Valve, 5mm, 16cm, Fiberglass Insulated  | 35       |
| 111800      | Trocar Sleeve with Piston Valve, 8mm, 16cm  | 35       |
| 112060      | Pyramidal Trocar, 5mm x 6.75"   | 35       |
| 112080      | Pyramidal Trocar, 8mm x 6.9"  | 35       |
| 112107      | Pyramidal Trocar, 10.7mm x 7.2"   | 35       |
| 112110      | Pyramidal Trocar, 10mm x 9.2"   | 35       |
| 113501      | 3-Prong Bulldog Hasson Grasper, 5mm dia. x 30cm   | 33       |
| 113502      | 3-Prong Curved Hasson Grasper, 5mm dia. x 30cm  | 33       |
| 113503      | 3-Prong Straight Hasson Grasper, 5mm dia. x 30cm  | 33       |
| 113505      | 3-Prong Bulldog Hasson Grasper, Inner Tong for 113501   | 33       |
| 113506      | 3-Prong Curved Hasson Grasper, Inner Tong for 113502  | 33       |
| 113507      | 3-Prong Straight Hasson Grasper, Inner Tong for 113503  | 33       |
| 113509      | Spring with Teflon® Guides, For all Hasson graspers   | 33       |
| 113653      | Reducer/Blocker, Reduces from 10.7mm and 10mm to 5mm  | 37       |
| 113655      | Loop Guide, 5mm   | 37       |
| 114809      | Suture Punch, 7mm Needle x 17cm Working Length, Straight  | 36       |
| 114810      | Suture Punch, 7mm Needle x 17cm Working Length, Left Curve  | 36       |
| 116698      | Flush Syringe, 5 per package  | 37       |
| 116703      | Mixer Dissecting Forceps, 10mm dia. x 33cm  | 29       |
| 116708      | Metzenbaum Curved Scissors, 5mm dia. x 33cm   | 32       |
| 116712      | Allis Grasping Forceps, 5mm dia. x 33cm, 1" jaw   | 30       |
| 116713      | Babcock Grasping Forceps, 10mm dia. x 33cm, 1" jaw  | 30       |
| 116721      | Crile Curved Dissecting Forceps, 5mm dia. x 33cm  | 29       |
| 116722      | Crile Straight Dissecting Forceps, 5mm dia. x 33cm  | 29       |
| 116730      | Crile Straight Grasping Forceps, 5mm dia. x 33cm  | 30       |
| 116731      | Crile Curved Grasping Forceps, 5mm dia. x 33cm  | 30       |
| 116732      | Mixer Grasping Forceps, 10mm dia. x 33cm  | 30       |
| 116768      | Mayo Curved Scissors, 5mm dia. x 33cm   | 32       |
| 116800      | Meeker Grasping Forceps, 10mm dia. x 33cm   | 30       |
| 116804      | Kocher Grasping Forceps, 5mm dia. x 33cm  | 31       |
| 116806      | Debakey Straight Grasping Forceps, 5mm dia. x 33cm  | 31       |
| 116808      | Debakey Curved Grasping Forceps, 5mm dia. x 33cm  | 31       |
| 116812      | Allis Grasping Forceps, 5mm dia. x 33cm, 1.25" jaw  | 30       |
| 116822      | Pennington Grasping Forceps, 10mm dia. x 33cm   | 31       |
| 116850      | Meeker Dissecting Forceps, 10mm dia. x 33cm   | 29       |
| 116856      | Debakey Straight Dissecting Forceps, 5mm dia. x 33cm  | 29       |
| 116858      | Debakey Curved Dissecting Forceps, 5mm dia. x 33cm  | 29       |
| 117650      | Bi-Tec® Reusable Bipolar Cord, Oval Banana plugs for CONMED®, ASPEN, Bard, Birtcher, Concept® and Valleylab generators. | 34       |
| 117651      | Bi-Tec Reusable Bipolar Cord, Single plug for Eder, Elmed and Wolf generators.  | 34       |
| 117660      | Bi-Tec Thumb-Ring Handle, 5mm dia. x 33cm   | 34       |
| 117661      | Bi-Tec Thumb-Ring Handle, 5mm dia. x 45cm   | 34       |
| 117670      | Paddle Tip, 33cm  | 34       |
| 117671      | Paddle Tip, 45cm  | 34       |
| 117672      | Basket Tip, 33cm  | 34       |
| 117673      | Basket Tip, 45cm  | 34       |
| 117674      | Fine Tip, 33cm  | 34       |
| 118100      | Hasson Open Laparoscopy Cannula, 10.7mm   | 33       |
| 118101      | Hasson Cone Sleeve with Suture Ties, 10.7mm   | 33       |
| 118120      | Hasson Open Laparoscopy Cannula, 12.7mm   | 33       |
| 118371      | S-Shape Retractors, Small, .375" wide   | 37       |
| 118372      | S-Shape Retractors, Large, .5" wide   | 37       |
| 120304      | Verres Needle, 10cm   | 37       |
| 120305      | Verres Needle, 12cm   | 37       |
| 120306      | Verres Needle, 15cm   | 37       |
| 125012      | Trocar Sleeve with Piston Valve, 12.7mm, 16cm   | 35       |
| 153511      | Replacement Acorns, Large (1" length x 1" dia.)   | 37       |
| 153512      | Replacement Acorns, Small (1" length x .75" dia.)   | 37       |
| 172158      | With Bracket for 172001, 250W   | 28       |
| 175601      | Monopolar Cord, Reusable for Valleylab, Aspen, Bovie  | 32       |
| 78807039595 | Replacement O-Ring for Outer Cannulas   | 10       |

| Cat. No.    | Description  | Page No. |
|-------------|--|----------|
| 161045A     | Endoscopic Instrument Tray, 5.5" x 10" x 29.5" for 45cm instruments                            | 7        |
| 500025CC    | 25mm "C" mount Coupler-Cartridge   | 6        |
| 500025CE    | 25mm "C" mount Coupler-Eyecup  | 6        |
| 500035CC    | 35mm "C" mount Coupler-Cartridge   | 6        |
| 500035CE    | 35mm "C" mount Coupler-Eyecup  | 6        |
| 500035VC    | 35mm "V" mount Coupler-Cartridge   | 6        |
| 500035VE    | 35mm "V" mount Coupler-Eyecup  | 6        |
| 60-3950-031 | 5" x 96" Camera Drape-Qty. 20  | 28       |
| 8133A       | Print/Ink Set, for 8132A (100 Prints)  | 28       |
| 8149-01     | "S"-VHS Barrel Extender, Female to Male  | 28       |
| 8149-06     | 6' "S" Cable   | 28       |
| 8149-100    | 100' "S" Cable   | 28       |
| 8149-20     | 25' "S" Cable  | 28       |
| 8149-3      | 3' "S" Cable   | 28       |
| 8149-50     | 50' "S" Cable  | 28       |
| 8149-75     | 75' "S" Cable  | 28       |
| 8175-06     | 6' BNC Cable   | 28       |
| 8175-15     | 15' BNC Cable  | 28       |
| 8175-20     | 20' BNC Cable  | 28       |
| 8199C       | Cables, Harness BNC for 8180A, 8180AC, 8180, 8180C, 8170                                       | 28       |
| C3101       | Sheath System for 1.9mm Scopes, 2.8mm Sheath   | 7        |
| C3102       | Sheath System for 1.9mm Scopes, Blunt Obturator  | 7        |
| C3103       | Sheath System for 1.9mm Scopes, Conical Obturator  | 7        |
| C3104       | Sheath System for 1.9mm Scopes, Sharp Trocar   | 7        |
| C3106       | Autoclavable Arthroscope Tray (holds 2 scopes) Dimensions 3.2"w x 1.4" h x 12"d                | 26       |
| C3107       | Autoclavable Laparoscope Tray (holds 2 scopes) Dimensions 3.2"w x 1.4"h x 17"d                 | 26       |
| C3108       | Autoclavable Tray for camera head, light guides, and scopes Dimensions 3.2"w x 2.25'h x 20.5"d | 26       |
| C3109       | Autoclavable Tray-two inner trays Dimensions 9.7"w x 4.75"h x 20.5"D                           | 26       |
| C3140       | Apex® 180 Watt Light Source  | 15, 28   |
| C3141       | 180 Watt Xenon Replacement Bulb with mounting bracket, Bulb Assembly for C3140                 | 15, 28   |
| C3154       | Keyboard Tray for ConMed Linvatec 8179 Video Cart  | 13       |
| C3173       | Print/Ink Set, for 3172 (100 Prints)   | 28       |
| C3174       | Print/Ink Set, 6/pk for C3172  | 28       |
| C3186       | RGB Video Cable, 4' (BNC to BNC)   | 28       |
| C3240       | Coupler, C-Mount, O-Rings  | 28       |
| C3241       | Coupler, V-Mount, O-Rings  | 28       |
| C3252       | Sheath System for 2.5mm Scopes, 3.5mm Sheath   | 7        |
| C3252-30    | Sheath System for 2.5mm Scopes, 3.5mm Sheath with 30° tip                                      | 7        |
| C3253       | Sheath System for 2.5mm Scopes, Blunt Obturator  | 7        |
| C3254       | Sheath System for 2.5mm Scopes, Conical Obturator  | 7        |
| C3255       | Sheath System for 2.5mm Scopes, Sharp Trocar   | 7        |
| C3271       | Print/Ink Set, for C3149 (200 Prints)  | 28       |
| C3278       | 5mm Universal Light Guide, 10'   | 15       |
| C3279       | 3mm Universal Light Guide, 10'   | 15       |
| C7010       | Laparoflator Tubing, 16L, Disposable with filter, Luer Locks on both ends                      | 17, 37   |
| C7011       | Insufflation tubing set, disposable, IEC to Luer, with filter                                  | 17       |
| C7104       | 6' Power Cord, 115v  | 16, 28   |
| C7104-1     | 1' Power Cord, 115v  | 28       |
| C7104-2     | 2' Power Cord, 115v  | 28       |
| C7104-3     | 3' Power Cord, 115v  | 28       |
| C7104-4     | 4' Power Cord, 115v  | 28       |
| C7104-k     | Power Cord Kit   | 28       |
| C7105       | Power Cord, 230 VAC, 10'   | 16, 28   |
| C7542       | 4mm, 0° Eyecup Hysteroscope  | 12       |
| C7543       | 4mm, 30° Eyecup Hysteroscope   | 12       |
| CD 003A     | Envision™ Autoclavable Camera Interactive Tour, CD-Rom   | 28       |
| E52-076-000 | BNC Female to RCA Male   | 28       |
| E52-120-000 | Phono Plug to .125" Mini Plug  | 28       |
| E52-152-000 | RCA Female to RCA Male   | 28       |
| GS1000      | ConMed Linvatec 35L Single Port Insufflator  | 16, 17   |
| GS1002      | ConMed Linvatec 40L Dual Port Insufflator  | 16, 17   |
| GS1012      | CO <sub>2</sub> Warmer, in-line, reusable  | 17       |
| GS1013      | CPS Tubing Set, disposable, with filter  | 17       |
| GS1014      | CO <sub>2</sub> Humidifier - Warmer assembly, reusable   | 17       |
| GS1015      | CO <sub>2</sub> Humidifier - Sheath and tubing set w/filter, disposable                        | 17       |
| GS1016      | Insufflation tubing, disposable, CPC to Luer, with filter                                      | 17       |
| GS1050      | Adapter, CO <sub>2</sub> Output, CPC to IEC (for C7011 tubing)                                 | 17       |
| GS1051      | Adapter, CO <sub>2</sub> Output, CPC to Luer (for C7010 tubing)                                | 17       |
| GS1052      | High Pressure Hose and Yoke for CO <sub>2</sub> E-Tank, 3'                                     | 16       |
| GS1053      | Low Pressure Hose for "wall" CO <sub>2</sub> , 7/16" female flare to DISS female, 2'           | 16       |

# Numerical Index



| Cat. No. | Description   | Page No. |
|----------|---|----------|
| GS1054   | Cleaning Brushes for Warmer assembly 10/pkg   | 17       |
| GS1054   | Cleaning Brushes for Warmer assembly 10/pkg   | 17       |
| IM3300   | 3CCD Enhanced Definition Camera Controller, NTSC  | 6, 15    |
| IM3301   | 3CCD Enhanced Definition Camera Controller, PAL   | 6, 15    |
| IM3330   | Autoclavable 3CCD Enhanced Definition Eyecup Camera Head, NTSC  | 6        |
| IM3331   | Autoclavable 3CCD Enhanced Definition Eyecup Camera Head, PAL   | 6        |
| IM3332   | Autoclavable 3CCD Enhanced Definition Cartridge Camera Head, NTSC                                     | 6        |
| IM3333   | Autoclavable 3CCD Enhanced Definition Cartridge Camera Head, PAL                                      | 6        |
| IM3334   | Autoclavable 3CCD Enhanced Definition Urology Camera Head, NTSC                                       | 6        |
| IM3335   | Autoclavable 3CCD Enhanced Definition Urology Camera Head, PAL  | 6        |
| IM4000   | High Definition Camera Controller   | 6        |
| IM4120   | High Definition 3CCD Camera Head – Eyecup   | 6        |
| IM4121   | High Definition 3CCD Camera Head - Cartridge  | 6        |
| IM4123   | High Definition 3CCD Camera Head – Urology  | 6        |
| IM9001   | Cable, 3.5mm to 3.5mm Stereo Remote   | 28       |
| IM9005   | 3.5mm T-Splitter Cable  | 28       |
| IM9010   | HD-SDI video cable, BNC to BNC, 3 ft  | 28       |
| IM9011   | HD-SDI video cable, BNC to BNC, 6 ft  | 28       |
| IM9012   | HD-SDI video cable, BNC to BNC, 25 ft   | 28       |
| IM9020   | DVI-D video cable, DVI to DVI, 3 ft.  | 28       |
| IM9021   | DVI-D video cable, DVI to DVI, 6 ft.  | 28       |
| IM9022   | DVI-D video cable, DVI to DVI, 25 ft  | 28       |
| LS7500   | 300 Watt Xenon Light Source, 115V   | 15, 28   |
| LS7501   | Replacement Bulb with mounting bracket, With Bracket for LS7500                                       | 15, 28   |
| OC4601   | 4.6mm Stainless Steel Cannula   | 10       |
| OC4602   | 4.6mm Stainless Steel Retaining Cannula   | 10       |
| OC4603   | 4.6mm Trocar  | 10       |
| OC4604   | 4.6mm Conical Obturator   | 10       |
| OC4605   | 4.6mm Cannulated Obturator  | 10       |
| OC4606   | 4.6mm Stainless Steel 30°/70° Cannula   | 10       |
| OC5801   | 5.8mm Stainless Steel Cannula   | 10       |
| OC5801XL | 5.8mm Extended Length Stainless Steel Cannula   | 10       |
| OC5802   | 5.8mm Stainless Steel Retaining Cannula   | 10       |
| OC5803   | 5.8mm Trocar  | 10       |
| OC5804   | 5.8mm Conical Obturator   | 10       |
| OC5804XL | 5.8mm Extended Length Conical Obturator   | 10       |
| OC5805   | 5.8mm Cannulated Obturator  | 10       |
| OC5806   | 5.8mm Stainless Steel 30°/70° Cannula   | 10       |
| OC7601   | 7.6mm Stainless Steel Cannula   | 10       |
| OC7602   | 7.6mm Stainless Steel Retaining Cannula   | 10       |
| OC7603   | 7.6mm Trocar  | 10       |
| OC7604   | 7.6mm Conical Obturator   | 10       |
| OC7605   | 7.6mm Cannulated Obturator  | 10       |
| OC7606   | 7.6mm Stainless Steel 30°/70° Cannula   | 10       |
| QL4000   | QuickLatch® Autoclavable 4mm Scopes, 4mm 0°, Eyecup   | 9        |
| QL4001   | QuickLatch Autoclavable 4mm Scopes, 4mm 0°, Cartridge   | 9        |
| QL4300   | QuickLatch Autoclavable 4mm Scopes, 4mm 30°, Eyecup   | 9        |
| QL4301   | QuickLatch Autoclavable 4mm Scopes, 4mm 30°, Cartridge  | 9        |
| QL4700   | QuickLatch Autoclavable 4mm Scopes, 4mm 70°, Eyecup   | 9        |
| QL4701   | QuickLatch Autoclavable 4mm Scopes, 4mm 70°, Cartridge  | 9        |
| QL5531   | 5.5mm Arthroscopy Sheath Kit, Single Stopcock   | 9        |
| QL5532   | 5.5mm Arthroscopy Sheath Kit, Double Stopcock   | 9        |
| QL6101   | Blunt Obturator   | 9        |
| QL6102   | Conical Obturator   | 9        |
| QL6103   | Sharp Trocar  | 9        |
| QL6104   | Cannulated Obturator  | 9        |
| QL6111   | QuickLatch® Bridge Systems for 4mm Scope, Single Stopcock Bridge                                      | 9        |
| QL6112   | QuickLatch Bridge Systems for 4mm Scope, Double Stopcock Bridge                                       | 9        |
| QL6131   | 5.9mm High Flow Sheath Kit, Single Stopcock   | 9        |
| QL6132   | 5.9mm High Flow Sheath Kit, Double Stopcock   | 9        |
| QL6201   | Pressure Sensing Outer Tip Assembly   | 9        |
| QL6205   | Pressure Sensing O-ring, Outer Tip Assembly, Qty. 2   | 9        |
| QL6210   | QuickLatch Bridge Systems for 4mm Scope, Pressure Sensing Bridge Adapter                              | 9        |
| QL6210XL | QuickLatch Bridge Systems for 4mm Scope, Pressure Sensing Bridge Adapter for Extended Length Cannulas | 9        |
| QL6230   | Pressure Sensing 5.9mm Sheath Body  | 9        |
| QL6231   | 5.9mm Pressure Sensing Sheath Kit, Single Stopcock  | 9        |
| QL6232   | 5.9mm Pressure Sensing Sheath Kit, Double Stopcock  | 9        |
| T0001    | Autoclavable Polishing Paste  | 28       |
| T1000    | 10mm Autoclavable Endoscope, 0°   | 11       |
| T1030    | 10mm Autoclavable Endoscope, 30°  | 11       |

| Cat. No. | Description  | Page No. |
|----------|--|----------|
| T1045    | 10mm Autoclavable Endoscope, 45°                           | 11       |
| T1900    | Autoclavable Scopes, 1.9mm 0°, Eyecup                      | 7        |
| T1901    | Autoclavable Scopes, 1.9mm 0°, Cartridge                   | 7        |
| T1930    | Autoclavable Scopes, 1.9mm 30°, Eyecup                     | 7        |
| T1931    | Autoclavable Scopes, 1.9mm 30°, Cartridge                  | 7        |
| T2500    | Autoclavable Scopes, 2.5mm 0°, Eyecup                      | 7        |
| T2501    | Autoclavable Scopes, 2.5mm 0°, Cartridge                   | 7        |
| T2530    | Autoclavable Scopes, 2.5mm 30°, Eyecup                     | 7        |
| T2531    | Autoclavable Scopes, 2.5mm 30°, Cartridge                  | 7        |
| T2570    | Autoclavable Scopes, 2.5mm 70°, Eyecup                     | 7        |
| T2571    | Autoclavable Scopes, 2.5mm 70°, Cartridge                  | 7        |
| T2900    | QuickLatch® Autoclavable 2.9mm Scopes, 2.9mm 0°, Eyecup    | 8        |
| T2901    | QuickLatch Autoclavable 2.9mm Scopes, 2.9mm 0°, Cartridge  | 8        |
| T2930    | QuickLatch Autoclavable 2.9mm Scopes, 2.9mm 30°, Eyecup    | 8        |
| T2931    | QuickLatch Autoclavable 2.9mm Scopes, 2.9mm 30°, Cartridge | 8        |
| T2944    | QuickLatch Autoclavable 2.9mm Scopes, 2.9mm 45°, Eyecup    | 8        |
| T2945    | QuickLatch Autoclavable 2.9mm Scopes, 2.9mm 45°, Cartridge | 8        |
| T2970    | QuickLatch Autoclavable 2.9mm Scopes, 2.9mm 70°, Eyecup    | 8        |
| T2971    | QuickLatch Autoclavable 2.9mm Scopes, 2.9mm 70°, Cartridge | 8        |
| T4031    | 4.0mm Small Joint Single Stopcock Sheath                   | 8        |
| T4032    | 4.0mm Small Joint Double Stopcock Sheath                   | 8        |
| T4730    | Arthroscopy Sheath Body (replacement)                      | 8        |
| T4731    | 4.7mm Arthroscopy Single Stopcock Sheath                   | 8        |
| T4732    | 4.7mm Arthroscopy Double Stopcock Sheath                   | 8        |
| T4901    | Blunt Obturator  | 8        |
| T4902    | Conical Obturator  | 8        |
| T4903    | Sharp Trocar   | 8        |
| T4904    | Sheath Body O-Ring (replacement), Qty. 2                   | 8, 9     |
| T4904    | Sheath Body O-ring (Replacement), Qty. 2                   | 8, 9     |
| T4905    | Stopcock Locking Nut                                       | 8, 9, 11 |
| T4905    | Stopcock Locking Nut                                       | 8, 9, 11 |
| T4905    | Replacement Stopcock Nut                                   | 8, 9, 11 |
| T4906    | 14" Switching Stick  | 8-10     |
| T4906-11 | 11" Switching Stick  | 8-10     |
| T4907    | Arthroscopic Portal Rod                                    | 8, 9     |
| T4907    | Arthroscopic Portal Rod                                    | 8, 9     |
| T4908    | Stopcock O-Ring (replacement), Qty. 4                      | 8, 9, 11 |
| T4908    | Stopcock O-ring (Replacement), Qty. 4                      | 8, 9, 11 |
| T4908    | Replacement O-ring for Sheath                              | 8, 9, 11 |
| T4910    | Pressure Sensing Bridge Adapter                            | 8        |
| T4911    | Single Stopcock Bridge                                     | 8, 10    |
| T4912    | Double Stopcock Bridge                                     | 8, 10    |
| T4914    | Stopcock Lock  | 8, 9     |
| T4914    | QuickLatch Stopcock Lock                                   | 8, 9     |
| T4930    | Arthroscopy High Flow Sheath Body (replacement)            | 8        |
| T4931    | 5.2mm High Flow Single Stopcock Sheath                     | 8        |
| T4932    | 5.2mm High Flow Double Stopcock Sheath                     | 8        |
| T5101    | Pressure Sensing Single Stopcock Assembly                  | 8, 9     |
| T5101    | Pressure Sensing Single Stopcock Assembly                  | 8, 9     |
| T5102    | Pressure Sensing Double Stopcock Assembly                  | 8, 9     |
| T5102    | Pressure Sensing Double Stopcock Assembly                  | 8, 9     |
| T5103    | Pressure Sensing Outer Tip Assembly                        | 8        |
| T5104    | Pressure Sensing Stopcock O-ring                           | 8, 9     |
| T5104    | Pressure Sensing Stopcock O-ring (replacement)             | 8, 9     |
| T5105    | Pressure Sensing Outer Tip Assembly O-ring                 | 8        |
| T5130    | Pressure Sensing Sheath Body                               | 8        |
| T5131    | 5.2mm Pressure Sensing Single Stopcock Sheath System       | 8        |
| T5132    | 5.2mm Pressure Sensing Double Stopcock Sheath System       | 8        |
| T5200    | 5.5mm Autoclavable Endoscopes, 5.0mm 0°, Eyecup            | 11       |
| T5201    | 5.5mm Autoclavable Endoscopes, 5.0mm 0°, Cartridge         | 11       |
| T5230    | 5.5mm Autoclavable Endoscopes, 5.0mm 30°, Eyecup           | 11       |
| T5231    | 5.5mm Autoclavable Endoscopes, 5.0mm 30°, Cartridge        | 11       |
| T5244    | 5.5mm Autoclavable Endoscopes, 5.0mm 45°, Eyecup           | 11       |
| T5245    | 5.5mm Autoclavable Endoscopes, 5.0mm 45°, Cartridge        | 11       |
| T5801    | Single Stopcock Assembly                                   | 9, 11    |
| T5801    | Single Stopcock Assembly                                   | 9, 11    |
| T5802    | Double Stopcock Assembly                                   | 9, 11    |
| T5802    | Double Stopcock Assembly                                   | 9, 11    |
| T5803    | Blunt Obturator  | 11       |
| T5804    | Conical Obturator  | 11       |

# Numerical Index



| Cat. No. | Description  | Page No.   |
|----------|--|------------|
| T5805    | Sharp Trocar   | 11         |
| T5811    | Single Stopcock Bridge   | 11         |
| T5812    | Double Stopcock Bridge   | 11         |
| T5814    | Stopcock Lock  | 11         |
| T5834    | 5.8mm Fenestrated 30° Sheath Body  | 11         |
| T5835    | 5.8mm Non-Fenestrated 30° Sheath Body  | 11         |
| T5845    | 4.5mm Switching Stick  | 11         |
| T5874    | 5.8mm Fenestrated 30°/70° Sheath Body  | 11         |
| T5875    | 5.8mm Non-Fenestrated 30°/70° Sheath Body  | 11         |
| TSV530   | 5.0mm Wide Angle Endoscope 30°, Eyecup   | 11         |
| TSV531   | 5.0mm Wide Angle Endoscope 30°, Cartridge  | 11         |
| VP1500   | Digital Documentation System (NTSC)  | 13, 14, 24 |
| VP1500P  | Digital Documentation System (PAL)   | 13, 14     |
| VP1502   | Footswitch, Sony FS-20   | 13         |
| VP2721   | Sony UP-D23MD Digital Color Printer  | 14, 28     |
| VP2722   | Sony UPC-21L Color Print Pack (4 x 50 sheets and 4 Ribbons), for VP2721 (200 Prints)         | 14, 28     |
| VP2750   | Sony UP-D55MD Digital Color Printer  | 14, 19, 28 |
| VP2751   | Sony UPC-55 Color Print Pack (2 x 100 Sheets and 2 Ribbons), for VP2750, VP2755 (200 Prints) | 14, 19, 28 |
| VP2752   | Ink Ribbon Holder for UP-D55MD Printer   | 14         |
| VP2753   | Paper Tray for Sony UP-D55MD Printer   | 14         |
| VP2754   | USB Printer Cable, 3 ft (90 cm)  | 13, 14     |
| VP2755   | Sony UP-55MD\L Color Video Printer   | 19, 28     |
| VP2755EW | Ext. Warranty Sony UP-55MD Video Printer   | 19         |
| VP2755R  | Refurb, Sony UP-55MD\L Video Printer   | 19         |
| VP3600   | Sony DVO-1000MD DVD Recorder   | 19         |
| VP4602   | ConMed Linvatec Rolling Stand (for Flat Panel)   | 22         |
| VP4619   | 19" LCD Monitor NDS  | 18         |
| VP4621   | Sony LMD2140MD LCD Monitor   | 18, 22     |
| VP4623   | 23" High Definition LCD Monitor  | 18         |
| VP4632   | 32" High Definition LCD Monitor  | 18, 20     |
| VP6500   | ConMed Linvatec Standard Video Cart  | 20, 24     |
| VP6501   | ConMed Linvatec Premium Video Cart   | 21, 24     |
| VP6502   | ConMed Linvatec Multi-Specialty Video Cart   | 20, 24     |
| VP6503   | ConMed Linvatec Assistant Video Cart   | 22, 24     |
| VP6504   | ConMed Linvatec Articulating Arm Cart, 120 VAC   | 22         |
| VP6520   | Rotating CRT Ttray   | 23         |
| VP6526   | Main Flat Panel Post Mount   | 23         |
| VP6528   | Secondary Flat Panel Arm   | 23         |
| VP6531   | Pole Pump Mount  | 23         |
| VP6533   | CO <sub>2</sub> E-Tank Holder  | 24         |
| VP6534   | Infusion Pole, 4-bag   | 23         |
| VP6542   | Keyboard Tray for ConMed Linvatec VP6500 Series Video Carts                                  | 13, 24     |
| VP6542   | Keyboard Tray  | 13, 24     |
| VP6543   | Replacement Shelf  | 25         |
| VP6545   | Isolation Transformer  | 24         |
| VP6547   | Power cord reel module   | 24, 25     |
| VP6548   | Drawer with lock   | 25         |
| VP6549   | Undercarriage  | 24         |
| VP6550   | Video Monitor Holding Strap  | 25         |
| VP6565   | Heavy Panel, Flat Panel Post Mount   | 23         |
| VP8500   | Video Cart, Standard   | 20         |
| VP8510   | Footpedal Storage  | 20         |
| VP8520   | Secondary Arm  | 20         |
| VP8530   | Infusion Holder  | 20         |
| VP8540   | 17" Wide Shelf   | 20         |
| VP9501   | RGB Cable, HD-15 to 4-BNC, 6 ft.   | 13         |
| VP9502   | USB Keyboard Extension Cable   | 13         |

| Cat. No.    | Description  | Page No. |
|-------------|--|----------|
| T4906-11    | 11" Switching Stick  | 8-10     |
| 8149-01     | "S"-VHS Barrel Extender, Female to Male                          | 28       |
| 5502        | 0 degree laparoscope with angled light post                      | 11       |
| C7104-1     | 1' Power Cord, 115v  | 28       |
| C7105       | 10' Power Cord, 230v   | 16, 28   |
| 8149-100    | 100' "S" Cable   | 28       |
| T1030       | 10mm Autoclavable Endoscope, 30°                                 | 11       |
| T1000       | 10mm Autoclavable Endoscope, 0°                                  | 11       |
| T1045       | 10mm Autoclavable Endoscope, 45°                                 | 11       |
| 7579        | 10mm, 0° Operating Eyecup Laparoscope (5mm working channel)      | 12       |
| 7579.1      | 10mm, 0° Operating Eyecup Laparoscope w/reverse light post       | 12       |
| 110006      | 10mm/10.7mm Trocar Sleeves, Purple                               | 35       |
| 110010      | 12.7mm Trocar Sleeves, Orange                                    | 35       |
| T4906       | 14" Switching Stick  | 8-10     |
| 8175-15     | 15' BNC Cable  | 28       |
| C3141       | 180 Watt Xenon Replacement Bulb with mounting bracket, for C3140 | 15, 28   |
| VP4619      | 19" LCD Monitor NDS  | 18       |
| C7104-2     | 2' Power Cord, 115v  | 28       |
| 8175-20     | 20' BNC Cable  | 28       |
| VP4623      | 23" High Definition LCD Monitor                                  | 18       |
| 8149-20     | 25' "S" Cable  | 28       |
| 500025CC    | 25mm "C" mount Coupler-Cartridge                                 | 6        |
| 500025CE    | 25mm "C" mount Coupler-Eyecup                                    | 6        |
| 8149-3      | 3' "S" Cable   | 28       |
| C7104-3     | 3' Power Cord, 115v  | 28       |
| IM9005      | 3.5mm T-Splitter Cable   | 28       |
| 5532        | 30 degree lap scope with angled light post                       | 11       |
| LS7500      | 300 Watt Xenon Light Source, 115V                                | 15, 28   |
| VP4632      | 32 High Definition LCD Monitor                                   | 18, 20   |
| 500035CC    | 35mm "C" mount Coupler-Cartridge                                 | 6        |
| 500035CE    | 35mm "C" mount Coupler-Eyecup                                    | 6        |
| 500035VC    | 35mm "V" mount Coupler-Cartridge                                 | 6        |
| 500035VE    | 35mm "V" mount Coupler-Eyecup                                    | 6        |
| IM3300      | 3CCD Enhanced Definition Camera Controller, NTSC                 | 6, 15    |
| IM3301      | 3CCD Enhanced Definition Camera Controller, PAL                  | 6, 15    |
| C3279       | 3mm Universal Light Guide, 10'                                   | 15       |
| 110001      | 3mm, 4mm Trocar Sleeves, Red                                     | 35       |
| 113501      | 3-Prong Bulldog Hasson Grasper, 5mm dia. x 30cm                  | 33       |
| 113505      | 3-Prong Bulldog Hasson Grasper, Inner Tong for 113501            | 33       |
| 113502      | 3-Prong Curved Hasson Grasper, 5mm dia. x 30cm                   | 33       |
| 113506      | 3-Prong Curved Hasson Grasper, Inner Tong for 113502             | 33       |
| 113503      | 3-Prong Straight Hasson Grasper, 5mm dia. x 30cm                 | 33       |
| 113507      | 3-Prong Straight Hasson Grasper, Inner Tong for 113503           | 33       |
| C7104-4     | 4' Power Cord, 115v  | 28       |
| T4032       | 4.0mm Small Joint Double Stopcock Sheath                         | 8        |
| T4031       | 4.0mm Small Joint Single Stopcock Sheath                         | 8        |
| T5845       | 4.5mm Switching Stick  | 11       |
| OC4605      | 4.6mm Cannulated Obturator                                       | 10       |
| OC4604      | 4.6mm Conical Obturator  | 10       |
| OC4606      | 4.6mm Stainless Steel 30°/70° Cannula                            | 10       |
| OC4601      | 4.6mm Stainless Steel Cannula                                    | 10       |
| OC4602      | 4.6mm Stainless Steel Retaining Cannula                          | 10       |
| OC4603      | 4.6mm Trocar   | 10       |
| T4732       | 4.7mm Arthroscopy Double Stopcock Sheath                         | 8        |
| T4731       | 4.7mm Arthroscopy Single Stopcock Sheath                         | 8        |
| 7568        | 4mm Blunt Obturator for 7566 and 7567                            | 12       |
| 7542        | 4mm, 0° Cartridge Hysteroscope                                   | 12       |
| C7542       | 4mm, 0° Eyecup Hysteroscope                                      | 12       |
| 7543        | 4mm, 30° Cartridge Hysteroscope                                  | 12       |
| C7543       | 4mm, 30° Eyecup Hysteroscope                                     | 12       |
| 60-3950-031 | 5" x 96" Camera Drape-Qty. 20                                    | 28       |
| TSV531      | 5.0mm Wide Angle Endoscope 30°, Cartridge                        | 11       |
| TSV530      | 5.0mm Wide Angle Endoscope 30°, Eyecup                           | 11       |
| 83234       | 5.1mm O.D., 3.5" (89mm) Length, Inflow Adapter                   | 10       |
| 83255       | 5.1mm O.D., 3.5" (89mm) Length, Inner Cannula                    | 10       |
| 83258       | 5.1mm O.D., 3.5" (89mm) Length, Obturator                        | 10       |
| 83256       | 5.1mm O.D., 3.5" (89mm) Length, Outer Cannula                    | 10       |
| 83257       | 5.1mm O.D., 3.5" (89mm) Length, Trocar                           | 10       |
| 83234       | 5.1mm O.D., 5.0" (127mm) Length, Inflow Adapter                  | 10       |
| 83225       | 5.1mm O.D., 5.0" (127mm) Length, Inner Cannula                   | 10       |

# Alphabetical Index



| Cat. No. | Description  | Page No. |
|----------|--|----------|
| 83228    | 5.1mm O.D., 5.0" (127mm) Length, Obturator                             | 10       |
| 83226    | 5.1mm O.D., 5.0" (127mm) Length, Outer Cannula                         | 10       |
| 83227    | 5.1mm O.D., 5.0" (127mm) Length, Trocar                                | 10       |
| T4932    | 5.2mm High Flow Double Stopcock Sheath                                 | 8        |
| T4931    | 5.2mm High Flow Single Stopcock Sheath                                 | 8        |
| T5132    | 5.2mm Pressure Sensing Double Stopcock Sheath System                   | 8        |
| T5131    | 5.2mm Pressure Sensing Single Stopcock Sheath System                   | 8        |
| QL5532   | 5.5mm Arthroscopy Sheath Kit, Double Stopcock                          | 9        |
| QL5531   | 5.5mm Arthroscopy Sheath Kit, Single Stopcock                          | 9        |
| T5201    | 5.5mm Autoclavable Endoscopes, 5.0mm 0°, Cartridge                     | 11       |
| T5200    | 5.5mm Autoclavable Endoscopes, 5.0mm 0°, Eyecup                        | 11       |
| T5231    | 5.5mm Autoclavable Endoscopes, 5.0mm 30°, Cartridge                    | 11       |
| T5230    | 5.5mm Autoclavable Endoscopes, 5.0mm 30°, Eyecup                       | 11       |
| T5245    | 5.5mm Autoclavable Endoscopes, 5.0mm 45°, Cartridge                    | 11       |
| T5244    | 5.5mm Autoclavable Endoscopes, 5.0mm 45°, Eyecup                       | 11       |
| OC5805   | 5.8mm Cannulated Obturator   | 10       |
| OC5804   | 5.8mm Conical Obturator  | 10       |
| OC5804XL | 5.8mm Extended Length Conical Obturator                                | 10       |
| OC5801XL | 5.8mm Extended Length Stainless Steel Cannula                          | 10       |
| T5834    | 5.8mm Fenestrated 30° Sheath Body                                      | 11       |
| T5874    | 5.8mm Fenestrated 30°/70° Sheath Body                                  | 11       |
| T5835    | 5.8mm Non-Fenestrated 30° Sheath Body                                  | 11       |
| T5875    | 5.8mm Non-Fenestrated 30°/70° Sheath Body                              | 11       |
| OC5806   | 5.8mm Stainless Steel 30°/70° Cannula                                  | 10       |
| OC5801   | 5.8mm Stainless Steel Cannula  | 10       |
| OC5802   | 5.8mm Stainless Steel Retaining Cannula                                | 10       |
| OC5803   | 5.8mm Trocar   | 10       |
| QL6132   | 5.9mm High Flow Sheath Kit, Double Stopcock                            | 9        |
| QL6131   | 5.9mm High Flow Sheath Kit, Single Stopcock                            | 9        |
| QL6232   | 5.9mm Pressure Sensing Sheath Kit, Double Stopcock                     | 9        |
| QL6231   | 5.9mm Pressure Sensing Sheath Kit, Single Stopcock                     | 9        |
| 8149-50  | 50' "S" Cable  | 28       |
| 110002   | 5mm Trocar Sleeves, Green  | 35       |
| C3278    | 5mm Universal Light Guide, 10'   | 15       |
| 7567     | 5mm, 0° Diagnostic Hysteroscope Sheath for C7542/7542                  | 12       |
| 7566     | 5mm, 30° Diagnostic Hysteroscope Sheath for C7543/7543                 | 12       |
| 8149-06  | 6' "S" Cable   | 28       |
| 8175-06  | 6' BNC Cable   | 28       |
| C7104    | 6' Power Cord, 115v  | 16, 28   |
| 83235    | 6.3mm O.D., 3.5" (89mm) Length, Inflow Adapter                         | 10       |
| 83242    | 6.3mm O.D., 3.5" (89mm) Length, Obturator                              | 10       |
| 83243    | 6.3mm O.D., 3.5" (89mm) Length, Outer Cannula                          | 10       |
| 83244    | 6.3mm O.D., 3.5" (89mm) Length, Inner Cannula                          | 10       |
| 83241    | 6.3mm O.D., 3.5" (89mm) Length, Trocar                                 | 10       |
| 83235    | 6.3mm O.D., 5.0" (127mm) Length, Inflow Adapter                        | 10       |
| 83264    | 6.3mm O.D., 5.0" (127mm) Length, Inner Cannula                         | 10       |
| 83242    | 6.3mm O.D., 5.0" (127mm) Length, Obturator                             | 10       |
| 83263    | 6.3mm O.D., 5.0" (127mm) Length, Outer Cannula                         | 10       |
| 83261    | 6.3mm O.D., 5.0" (127mm) Length, Trocar                                | 10       |
| OC7605   | 7.6mm Cannulated Obturator   | 10       |
| OC7604   | 7.6mm Conical Obturator  | 10       |
| OC7606   | 7.6mm Stainless Steel 30°/70° Cannula                                  | 10       |
| OC7601   | 7.6mm Stainless Steel Cannula  | 10       |
| OC7602   | 7.6mm Stainless Steel Retaining Cannula                                | 10       |
| OC7603   | 7.6mm Trocar   | 10       |
| 8149-75  | 75' "S" Cable  | 28       |
| 7565     | 8mm, 0° Operating Hysteroscope Sheath                                  | 12       |
| 7564     | 8mm, 30° Operating Hysteroscope Sheath                                 | 12       |
| 9707     | 9" x 95" Camera Drape-Qty. 10  | 28       |
| 7456     | ACMI Light Source Fitting  | 15       |
| 7452     | ACMI Scope Fitting   | 15       |
| GS1050   | Adapter, CO <sub>2</sub> Output, CPC to IEC (for C7011 tubing)         | 17       |
| GS1051   | Adapter, CO <sub>2</sub> Output, CPC to Luer (for C7010 tubing)        | 17       |
| 116812   | Allis Grasping Forceps, 5mm dia. x 33cm, 1.25" jaw                     | 28       |
| 116712   | Allis Grasping Forceps, 5mm dia. x 33cm, 1" jaw                        | 30       |
| C3140    | Apex® 180 Watt Light Source  | 15, 28   |
| 7546     | Arthroscope Tray (holds 2 scopes)Dimensions 3.93" w x 1.5"h x 10.53" d | 26       |
| T4907    | Arthroscopic Portal Rod  | 8, 9     |
| T4907    | Arthroscopic Portal Rod  | 8, 9     |
| T4930    | Arthroscopy High Flow Sheath Body (replacement)                        | 8        |

| Cat. No.    | Description  | Page No.   |
|-------------|--|------------|
| T4730       | Arthroscopy Sheath Body (replacement)  | 8          |
| IM3332      | Autoclavable 3CCD Enhanced Definition Cartridge Camera Head, NTSC  | 6          |
| IM3333      | Autoclavable 3CCD Enhanced Definition Cartridge Camera Head, PAL   | 6          |
| IM3330      | Autoclavable 3CCD Enhanced Definition Eyecup Camera Head, NTSC   | 6          |
| IM3331      | Autoclavable 3CCD Enhanced Definition Eyecup Camera Head, PAL  | 6          |
| IM3334      | Autoclavable 3CCD Enhanced Definition Urology Camera Head, NTSC  | 6          |
| IM3335      | Autoclavable 3CCD Enhanced Definition Urology Camera Head, PAL   | 6          |
| C3106       | Autoclavable Arthroscope Tray (holds 2 scopes) Dimensions 3.2" w x 1.4" h x 12" d                                      | 26         |
| C3107       | Autoclavable Laparoscope Tray (holds 2 scopes) Dimensions 3.2" w x 1.4" h x 17" d                                      | 26         |
| T0001       | Autoclavable Polishing Paste   | 28         |
| T1901       | Autoclavable Scopes, 1.9mm 0°, Cartridge   | 7          |
| T1900       | Autoclavable Scopes, 1.9mm 0°, Eyecup  | 7          |
| T1931       | Autoclavable Scopes, 1.9mm 30°, Cartridge  | 7          |
| T1930       | Autoclavable Scopes, 1.9mm 30°, Eyecup   | 7          |
| T2501       | Autoclavable Scopes, 2.5mm 0°, Cartridge   | 7          |
| T2500       | Autoclavable Scopes, 2.5mm 0°, Eyecup  | 7          |
| T2531       | Autoclavable Scopes, 2.5mm 30°, Cartridge  | 7          |
| T2530       | Autoclavable Scopes, 2.5mm 30°, Eyecup   | 7          |
| T2571       | Autoclavable Scopes, 2.5mm 70°, Cartridge  | 7          |
| T2570       | Autoclavable Scopes, 2.5mm 70°, Eyecup   | 7          |
| C3108       | Autoclavable Tray for camera head, light guides, and scopes Dimensions 3.2" w x 2.25" h x 20.5" d                      | 26         |
| C3109       | Autoclavable Tray-two inner trays Dimensions 9.7" w x 4.75" h x 20.5" D  | 26         |
| 116713      | Babcock Grasping Forceps, 10mm dia. x 33cm, 1" jaw   | 30         |
| 117672      | Basket Tip, 33cm   | 34         |
| 117673      | Basket Tip, 45cm   | 34         |
| 117650      | Bi-Tec® Reusable Bipolar Cord, Oval Banana plugs for CONMED, ASPEN, Bard, Birtcher, Concept® and Valleylab generators. | 34         |
| 117651      | Bi-Tec Reusable Bipolar Cord, Single plug for Eder, Elmed and Wolf generators.   | 34         |
| 117660      | Bi-Tec Thumb-Ring Handle, 5mm dia. x 33cm  | 34         |
| 117661      | Bi-Tec Thumb-Ring Handle, 5mm dia. x 45cm  | 34         |
| QL6101      | Blunt Obturator  | 9          |
| T4901       | Blunt Obturator  | 8          |
| T5803       | Blunt Obturator  | 11         |
| E52-076-000 | BNC Female to RCA Male   | 28         |
| IM9001      | Cable, 3.5mm to 3.5mm Stereo Remote  | 28         |
| 7149        | Cable, Izziton Monitor Record Light  | 18, 19, 28 |
| 8199        | Cables, Harness "S" for 8180A, 8180AC, 8180, 8180C, 8170   | 28         |
| 8199C       | Cables, Harness BNC for 8180A, 8180AC, 8180, 8180C, 8170   | 28         |
| QL6104      | Cannulated Obturator   | 9          |
| GS1054      | Cleaning Brushes for Warmer assembly 10/pkg  | 17         |
| GS1054      | Cleaning Brushes for Warmer assembly 10/pkg  | 17         |
| 103010      | Cleaning Brushes, For 10mm Trocar Sleeve   | 37         |
| 103303      | Cleaning Brushes, For 3mm Biopsy Tong  | 37         |
| 103601      | Cleaning Brushes, For 3mm Trocar Sleeve  | 37         |
| 103606      | Cleaning Brushes, For 5mm Trocar Sleeve  | 37         |
| 103808      | Cleaning Brushes, For 8mm Trocar Sleeve  | 37         |
| 103302      | Cleaning Brushes, For Verres Needle  | 37         |
| VP6533      | CO <sub>2</sub> E-Tank Holder  | 24         |
| GS1015      | CO <sub>2</sub> Humidifier - Sheath and tubing set w/filter, disposable  | 17         |
| GS1014      | CO <sub>2</sub> Humidifier - Warmer assembly, reusable   | 17         |
| GS1012      | CO <sub>2</sub> Warmer, in-line, reusable  | 17         |
| QL6102      | Conical Obturator  | 9          |
| T4902       | Conical Obturator  | 8          |
| T5804       | Conical Obturator  | 11         |
| GS1000      | ConMed Linvatec 35L Single Port Insufflator  | 16, 17     |
| GS1002      | ConMed Linvatec 40L Dual Port Insufflator  | 16, 17     |
| VP6504      | ConMed Linvatec Articulating Arm Cart, 120 VAC   | 22         |
| VP6503      | ConMed Linvatec Assistant Video Cart   | 22, 24     |
| VP6502      | ConMed Linvatec Multi-Specialty Video Cart   | 20, 24     |
| VP6501      | ConMed Linvatec Premium Video Cart   | 21, 24     |
| VP4602      | ConMed Linvatec Rolling Stand (for Flat Panel)   | 22         |
| VP6500      | ConMed Linvatec Standard Video Cart  | 20, 24     |
| C3240       | Coupler, C-Mount, O-Rings  | 28         |
| C3241       | Coupler, V-Mount, O-Rings  | 28         |
| GS1013      | CPS Tubing Set, disposable, with filter  | 17         |
| 116721      | Crile Curved Dissecting Forceps, 5mm dia. x 33cm   | 29         |
| 116731      | Crile Curved Grasping Forceps, 5mm dia. x 33cm   | 30         |
| 116722      | Crile Straight Dissecting Forceps, 5mm dia. x 33cm   | 29         |
| 116730      | Crile Straight Grasping Forceps, 5mm dia. x 33cm   | 30         |
| 116858      | Debakey Curved Dissecting Forceps, 5mm dia. x 33cm   | 29         |
| 116808      | Debakey Curved Grasping Forceps, 5mm dia. x 33cm   | 31         |

# Alphabetical Index



| Cat. No.    | Description  | Page No.   |
|-------------|--|------------|
| 116856      | Debakey Straight Dissecting Forceps, 5mm dia. x 33cm                                 | 29         |
| 116806      | Debakey Straight Grasping Forceps, 5mm dia. x 33cm                                   | 31         |
| VP1500      | Digital Documentation System (NTSC)  | 13, 14, 24 |
| VP1500P     | Digital Documentation System (PAL)   | 13, 14     |
| T5802       | Double Stopcock Assembly   | 9, 11      |
| T5802       | Double Stopcock Assembly   | 9, 11      |
| T4912       | Double Stopcock Bridge   | 8, 10      |
| T5812       | Double Stopcock Bridge   | 11         |
| VP6548      | Drawer with lock   | 25         |
| IM9022      | DVI-D video cable, DVI to DVI, 25 ft   | 28         |
| IM9020      | DVI-D video cable, DVI to DVI, 3 ft.   | 28         |
| IM9021      | DVI-D video cable, DVI to DVI, 6 ft.   | 28         |
| 161045A     | Endoscopic Instrument Tray, 5.5" x 10" x 29.5" for 45cm instruments                  | 37         |
| CD 003A     | Envision™ Autoclavable Camera Interactive Tour, CD-Rom                               | 28         |
| VP2755EW    | Ext. Warranty Sony UP-55MD Video Printer   | 19         |
| 7513        | Fiber Optic Post Adapters, Wolf and Storz set (replacement part)                     | 28         |
| 117674      | Fine Tip, 33cm   | 34         |
| 116698      | Flush Syringe, 5 per package   | 37         |
| VP8510      | Footpedal Storage  | 20         |
| VP1502      | Footswitch, Sony FS-20   | 13         |
| 7444        | Grip "O" Console Feet Holders, Qty 2   | 25, 28     |
| 110009      | Hasson Cone Sealing Caps, 10.7mm and 12.7mm Hasson Cone, Black                       | 33         |
| 110003      | Hasson Cone Sealing Caps, 5mm Hasson Cone, Blue                                      | 33, 35     |
| 110004      | Hasson Cone Sealing Caps, 7mm Hasson Cone, Gray                                      | 33, 35     |
| 110005      | Hasson Cone Sealing Caps, 8mm Hasson Cone, White                                     | 33         |
| 118101      | Hasson Cone Sleeve with Suture Ties, 10.7mm  | 33         |
| 118100      | Hasson Open Laparoscopy Cannula, 10.7mm  | 33         |
| 118120      | Hasson Open Laparoscopy Cannula, 12.7mm  | 31         |
| IM9012      | HD-SDI video cable, BNC to BNC, 25 ft  | 28         |
| IM9010      | HD-SDI video cable, BNC to BNC, 3 ft   | 28         |
| IM9011      | HD-SDI video cable, BNC to BNC, 6 ft   | 28         |
| VP6565      | Heavy Panel, Flat Panel Post Mount   | 23         |
| IM4121      | High Definition 3CCD Camera Head - Cartridge   | 6          |
| IM4120      | High Definition 3CCD Camera Head - Eyecup  | 6          |
| IM4123      | High Definition 3CCD Camera Head - Urology   | 6          |
| IM4000      | High Definition Camera Controller  | 6          |
| GS1052      | High Pressure Hose and Yoke for CO <sub>2</sub> , E-Tank, 3'                         | 16         |
| 7562        | Hysteroscope Tray, holds 2 scopes Dimensions: 4.36" w x 1.35" h x 17.63" d           | 27         |
| 7554        | Infusion Adapter   | 10         |
| VP8530      | Infusion Holder  | 20         |
| VP6534      | Infusion Pole, 4-bag   | 23         |
| VP2752      | Ink Ribbon Holder for UP-D55MD Printer   | 14         |
| C7011       | Insufflation tubing set, disposable, IEC to Luer, with filter                        | 17         |
| GS1016      | Insufflation tubing, disposable, CPC to Luer, with filter                            | 17         |
| VP6545      | Isolation Transformer  | 24         |
| VP6542      | Keyboard Tray  | 13, 24     |
| C3154       | Keyboard Tray for ConMed Linvatec 8179 Video Cart                                    | 13         |
| VP6542      | Keyboard Tray for ConMed Linvatec VP6500 Series Video Carts                          | 13, 24     |
| 116804      | Kocher Grasping Forceps, 5mm dia. x 33cm   | 31         |
| C7010       | Laparoflator Tubing, 16L, Disposable with filter, Luer Locks on both ends            | 17, 37     |
| 7563        | Laparoscopic Tray, holds one 4.0mm Scope   | 27         |
| 113655      | Loop Guide, 5mm  | 37         |
| GS1053      | Low Pressure Hose for "wall" CO <sub>2</sub> , 7/16" female flare to DISS female, 2' | 16         |
| VP6526      | Main Flat Panel Post Mount   | 23         |
| 116768      | Mayo Curved Scissors, 5mm dia. x 33cm  | 32         |
| 116850      | Meeker Dissecting Forceps, 10mm dia. x 33cm  | 29         |
| 116800      | Meeker Grasping Forceps, 10mm dia. x 33cm  | 30         |
| 116708      | Metzenbaum Curved Scissors, 5mm dia. x 33cm  | 32         |
| 116703      | Mixer Dissecting Forceps, 10mm dia. x 33cm   | 29         |
| 116732      | Mixer Grasping Forceps, 10mm dia. x 33cm   | 30         |
| 175601      | Monopolar Cord, Reusable for Valleylab, Aspen, Bovie                                 | 32         |
| 7458        | Olympus Light Source Fitting   | 15         |
| 117670      | Paddle Tip, 33cm   | 34         |
| 117671      | Paddle Tip, 45cm   | 34         |
| VP2753      | Paper Tray for Sony UP-D55MD Printer   | 14         |
| 116822      | Pennington Grasping Forceps, 10mm dia. x 33cm  | 31         |
| E52-120-000 | Phono Plug to .125" Mini Plug  | 28         |
| VP6531      | Pole Pump Mount  | 23         |
| C7104-k     | Power Cord Kit   | 28         |
| VP6547      | Power cord reel module   | 24, 25     |

| Cat. No.    | Description   | Page No. |
|-------------|---|----------|
| QL6230      | Pressure Sensing 5.9mm Sheath Body  | 9        |
| T4910       | Pressure Sensing Bridge Adapter   | 8        |
| T5102       | Pressure Sensing Double Stopcock Assembly   | 8, 9     |
| T5102       | Pressure Sensing Double Stopcock Assembly   | 8, 9     |
| QL6205      | Pressure Sensing O-ring, Outer Tip Assembly, Qty. 2   | 9        |
| QL6201      | Pressure Sensing Outer Tip Assembly   | 9        |
| T5103       | Pressure Sensing Outer Tip Assembly   | 8        |
| T5105       | Pressure Sensing Outer Tip Assembly O-ring  | 8        |
| T5130       | Pressure Sensing Sheath Body  | 8        |
| T5101       | Pressure Sensing Single Stopcock Assembly   | 8, 9     |
| T5101       | Pressure Sensing Single Stopcock Assembly   | 8, 9     |
| T5104       | Pressure Sensing Stopcock O-ring  | 8, 9     |
| T5104       | Pressure Sensing Stopcock O-ring (replacement)  | 8, 9     |
| C3174       | Print/Ink Set, 6/pk for C3172   | 28       |
| C3173       | Print/Ink Set, for 3172 (100 Prints)  | 28       |
| 8123        | Print/Ink Set, for 8122, 8124 (200 Prints)  | 28       |
| 8129        | Print/Ink Set, for 8128, 8128A (100 Prints)   | 28       |
| 8133        | Print/Ink Set, for 8132 (80 Prints)   | 28       |
| 8133A       | Print/Ink Set, for 8132A (100 Prints)   | 28       |
| 8136        | Print/Ink Set, for 8134, 8134A, 8134B (100 Prints)  | 28       |
| 8143        | Print/Ink Set, for 8141 (100 Prints)  | 28       |
| C3271       | Print/Ink Set, for C3149 (200 Prints)   | 28       |
| 112107      | Pyramidal Trocar, 10.7mm x 7.2"   | 35       |
| 112110      | Pyramidal Trocar, 10mm x 9.2"   | 35       |
| 112060      | Pyramidal Trocar, 5mm x 6.75"   | 35       |
| 112080      | Pyramidal Trocar, 8mm x 6.9"  | 35       |
| QL6112      | QuickLatch® Bridge Systems for 4mm Scope, Double Stopcock Bridge                                      | 9        |
| QL6210      | QuickLatch Bridge Systems for 4mm Scope, Pressure Sensing Bridge Adapter                              | 9        |
| QL6210XL    | QuickLatch Bridge Systems for 4mm Scope, Pressure Sensing Bridge Adapter for Extended Length Cannulas | 9        |
| QL6111      | QuickLatch Bridge Systems for 4mm Scope, Single Stopcock Bridge                                       | 9        |
| T4914       | QuickLatch Stopcock Lock  | 8, 9     |
| T2901       | QuickLatch Autoclavable 2.9mm Scopes, 2.9mm 0°, Cartridge   | 8        |
| T2900       | QuickLatch Autoclavable 2.9mm Scopes, 2.9mm 0°, Eyecup  | 8        |
| T2931       | QuickLatch Autoclavable 2.9mm Scopes, 2.9mm 30°, Cartridge  | 8        |
| T2930       | QuickLatch Autoclavable 2.9mm Scopes, 2.9mm 30°, Eyecup   | 8        |
| T2945       | QuickLatch Autoclavable 2.9mm Scopes, 2.9mm 45°, Cartridge  | 8        |
| T2944       | QuickLatch Autoclavable 2.9mm Scopes, 2.9mm 45°, Eyecup   | 8        |
| T2971       | QuickLatch Autoclavable 2.9mm Scopes, 2.9mm 70°, Cartridge  | 8        |
| T2970       | QuickLatch Autoclavable 2.9mm Scopes, 2.9mm 70°, Eyecup   | 8        |
| QL4001      | QuickLatch Autoclavable 4mm Scopes, 4mm 0°, Cartridge   | 9        |
| QL4000      | QuickLatch Autoclavable 4mm Scopes, 4mm 0°, Eyecup  | 9        |
| QL4301      | QuickLatch Autoclavable 4mm Scopes, 4mm 30°, Cartridge  | 9        |
| QL4300      | QuickLatch Autoclavable 4mm Scopes, 4mm 30°, Eyecup   | 9        |
| QL4701      | QuickLatch Autoclavable 4mm Scopes, 4mm 70°, Cartridge  | 9        |
| QL4700      | QuickLatch Autoclavable 4mm Scopes, 4mm 70°, Eyecup   | 9        |
| E52-152-000 | RCA Female to RCA Male  | 28       |
| 113653      | Reducer/Blocker, Reduces from 10.7mm and 10mm to 5mm  | 37       |
| VP2755R     | Refurb, Sony UP-55MD\L Video Printer  | 19       |
| 153511      | Replacement Acorns, Large (1" length x 1" dia.)   | 37       |
| 153512      | Replacement Acorns, Small (1" length x .75" dia.)   | 37       |
| LS7501      | Replacement Bulb with mounting bracket, for LS7500  | 15, 28   |
| 78807039595 | Replacement O-Ring for Outer Cannulas   | 10       |
| T4908       | Replacement O-ring for Sheath   | 8, 9, 11 |
| VP6543      | Replacement Shelf   | 25       |
| T4905       | Replacement Stopcock Nut  | 8, 9, 11 |
| VP2754      | Replacement USB Printer Cable   | 13, 14   |
| VP9501      | RGB Cable, HD-15 to 4-BNC, 6 ft.  | 13       |
| 8168        | RGB Video Cable, 25 pin Female to 25 pin Female   | 28       |
| 8167        | RGB Video Cable, 25 pin Female to 25 pin Male   | 28       |
| 8173        | RGB Video Cable, 25 pin Male to 4 Quad BNC, 10 ft.  | 28       |
| C3186       | RGB Video Cable, 4' (BNC to BNC)  | 28       |
| 8174        | RGB Video Cable, 6' (BNC to BNC)  | 28       |
| VP6520      | Rotating CRT Ttray  | 23       |
| VP8520      | Secondary Arm   | 20       |
| VP6528      | Secondary Flat Panel Arm  | 23       |
| QL6103      | Sharp Trocar  | 9        |
| T4903       | Sharp Trocar  | 8        |
| T5805       | Sharp Trocar  | 11       |
| T4904       | Sheath Body O-Ring (replacement), Qty. 2  | 8, 9     |
| T4904       | Sheath Body O-ring (Replacement), Qty. 2  | 8, 9     |

# Alphabetical Index



| Cat. No. | Description  | Page No.   |
|----------|--|------------|
| C3101    | Sheath System for 1.9mm Scopes, 2.8mm Sheath   | 7          |
| C3102    | Sheath System for 1.9mm Scopes, Blunt Obturator  | 7          |
| C3103    | Sheath System for 1.9mm Scopes, Conical Obturator  | 7          |
| C3104    | Sheath System for 1.9mm Scopes, Sharp Trocar   | 7          |
| C3252    | Sheath System for 2.5mm Scopes, 3.5mm Sheath   | 7          |
| C3252-30 | Sheath System for 2.5mm Scopes, 3.5mm Sheath with 30° tip                                    | 7          |
| C3253    | Sheath System for 2.5mm Scopes, Blunt Obturator  | 7          |
| C3254    | Sheath System for 2.5mm Scopes, Conical Obturator  | 7          |
| C3255    | Sheath System for 2.5mm Scopes, Sharp Trocar   | 7          |
| 7557     | Silicone Cannula Seal (latex free), 1per package   | 10         |
| T5801    | Single Stopcock Assembly   | 9, 11      |
| T5801    | Single Stopcock Assembly   | 9, 11      |
| T4911    | Single Stopcock Bridge   | 8, 10      |
| T5811    | Single Stopcock Bridge   | 11         |
| VP3600   | Sony DVO-1000MD DVD Recorder   | 19         |
| VP4621   | Sony LMD2140MD LCD Monitor   | 18, 22     |
| VP2755   | Sony UP-55MD\L Color Video Printer   | 19, 28     |
| VP2722   | Sony UPC-21L Color Print Pack (4 x 50 sheets and 4 Ribbons), for VP2721 (200 Prints)         | 14, 28     |
| VP2751   | Sony UPC-55 Color Print Pack (2 x 100 Sheets and 2 Ribbons), for VP2750, VP2755 (200 Prints) | 14, 19, 28 |
| VP2721   | Sony UP-D23MD Digital Color Printer  | 14, 28     |
| VP2750   | Sony UP-D55MD Digital Color Printer  | 14, 19, 28 |
| 113509   | Spring with Teflon® Guides, For all Hasson graspers  | 33         |
| 118372   | S-Shape Retractors, Large, .5" wide  | 37         |
| 118371   | S-Shape Retractors, Small, .375" wide  | 37         |
| 7107     | Stopcock for 7579  | 12         |
| T4914    | Stopcock Lock  | 8, 9       |
| T5814    | Stopcock Lock  | 11         |
| T4905    | Stopcock Locking Nut   | 8, 9, 11   |
| T4905    | Stopcock Locking Nut   | 8, 9, 11   |
| T4908    | Stopcock O-Ring (replacement), Qty. 4  | 8, 9, 11   |
| T4908    | Stopcock O-ring (Replacement), Qty. 4  | 8, 9, 11   |
| 7457     | Storz Light Source Fitting   | 15         |
| 7453     | Storz, Olympus Scope Fitting   | 15         |
| 114810   | Suture Punch, 7mm Needle x 17cm Working Length, Left Curve                                   | 36         |
| 114809   | Suture Punch, 7mm Needle x 17cm Working Length, Straight                                     | 36         |
| 111110   | Trocar Sleeve with Piston Valve, 10.7mm, 16cm  | 35         |
| 111180   | Trocar Sleeve with Piston Valve, 10mm, 16cm  | 35         |
| 125012   | Trocar Sleeve with Piston Valve, 12.7mm, 16cm  | 35         |
| 111800   | Trocar Sleeve with Piston Valve, 8mm, 16cm   | 35         |
| 111260   | Trocar Sleeve without Valve, 5mm, 16cm   | 35         |
| 111262   | Trocar Sleeve without Valve, 5mm, 16cm   | 35         |
| 111460   | Trocar Sleeve without Valve, 5mm, 16cm, Fiberglass Insulated                                 | 35         |
| 110201   | Ultra-Stop®  | 27         |
| VP6549   | Undercarriage  | 24         |
| VP9502   | USB Keyboard Extension Cable   | 13         |
| VP2754   | USB Printer Cable, 3 ft (90 cm)  | 13, 14     |
| VP2754   | USB Printer Cable, 3 ft (90 cm)  | 13, 14     |
| 120304   | Verres Needle, 10cm  | 37         |
| 120305   | Verres Needle, 12cm  | 37         |
| 120306   | Verres Needle, 15cm  | 37         |
| VP8500   | Video Cart, Standard   | 20         |
| VP6550   | Video Monitor Holding Strap  | 25         |
| 7462     | Weck Xenon Light Source Fitting  | 15         |
| VP8540   | 17" Wide Shelf   | 20         |
| 172158   | With Bracket for 172001, 250W  | 28         |
| 8426     | With Bracket for 8425, 8425A, 8425E, 8435AE, 250W  | 28         |
| 8431     | With Bracket for 8430/8430W, Xenon, 8420E/8430WE, 300W                                       | 28         |
| 7455     | Wolf, Dyonics Light Source Fitting   | 15         |
| 7451     | Wolf, Dyonics Scope Fitting  | 15         |





**CONMED CORPORATION PRODUCT AREAS:**

**ARTHROSCOPY • ELECTROSURGERY • ENDOSCOPY • ENDOSURGERY • GASTROENTEROLOGY • INTEGRATED SYSTEMS • PATIENT CARE • POWERED INSTRUMENTS • PULMONOLOGY**



11311 Concept Boulevard  
Largo, FL 33773-4908  
(727) 392-6464  
Customer Service: 1-800-237-0169  
FAX: (727) 399-5256  
International FAX: +1 (727) 397-4540  
email: [customer\\_service@linvatec.com](mailto:customer_service@linvatec.com)  
[www.linvatec.com](http://www.linvatec.com)